

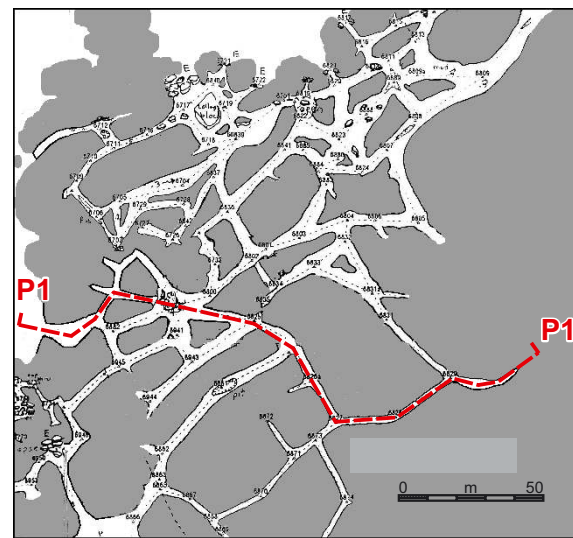
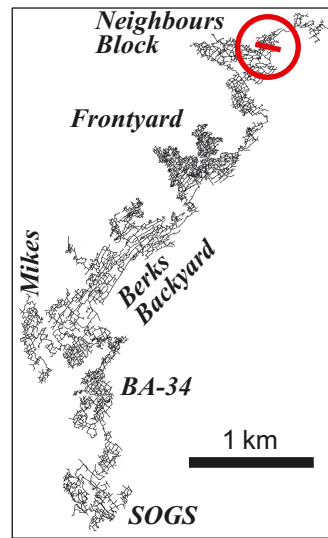
# Bullita Cave, Gregory Karst, NT

## Profile 1

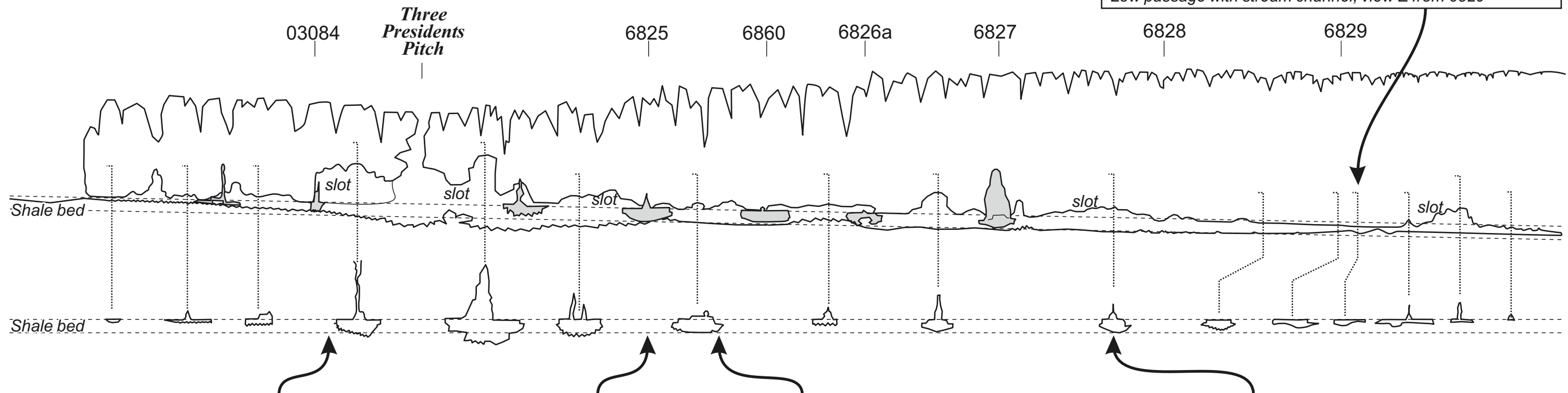
### Three Presidents area, Neighbours

Sketched & compiled  
by KG Grimes, 2005

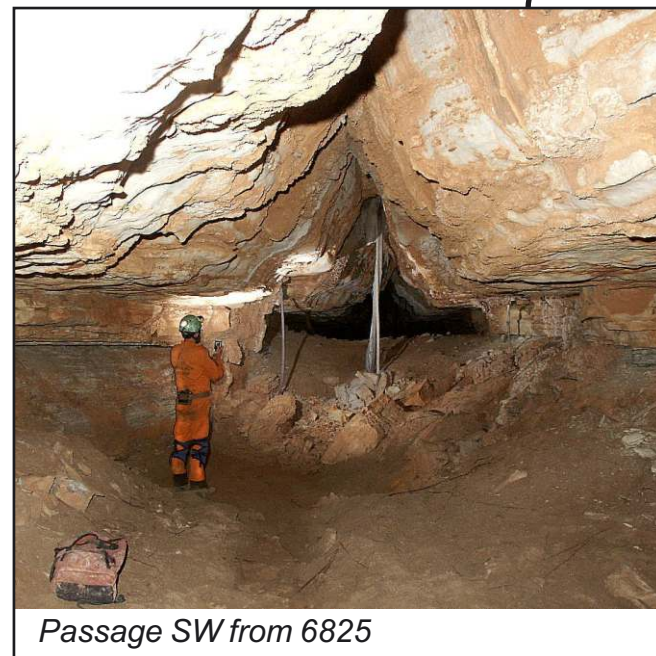
assisted by S. White, R. Kershaw & C. Redpath



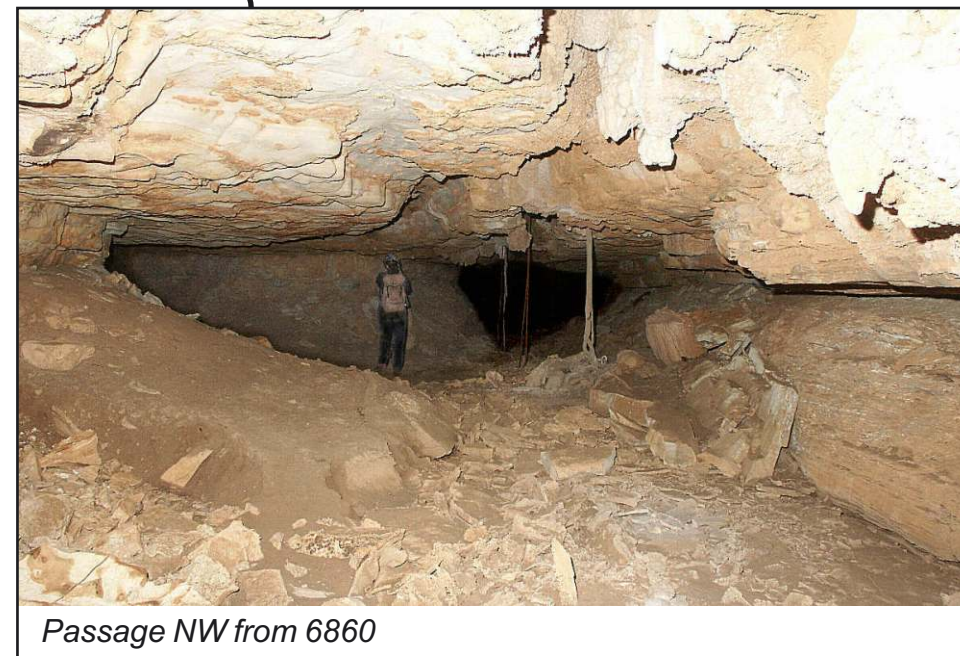
Note: Shaded sections in profile are passages entering from the sides.  
Surface karrenfield is drawn schematically.



Vadose(?) cockling, near 03084



Passage SW from 6825



Passage NW from 6860



Small passage W from 6828