

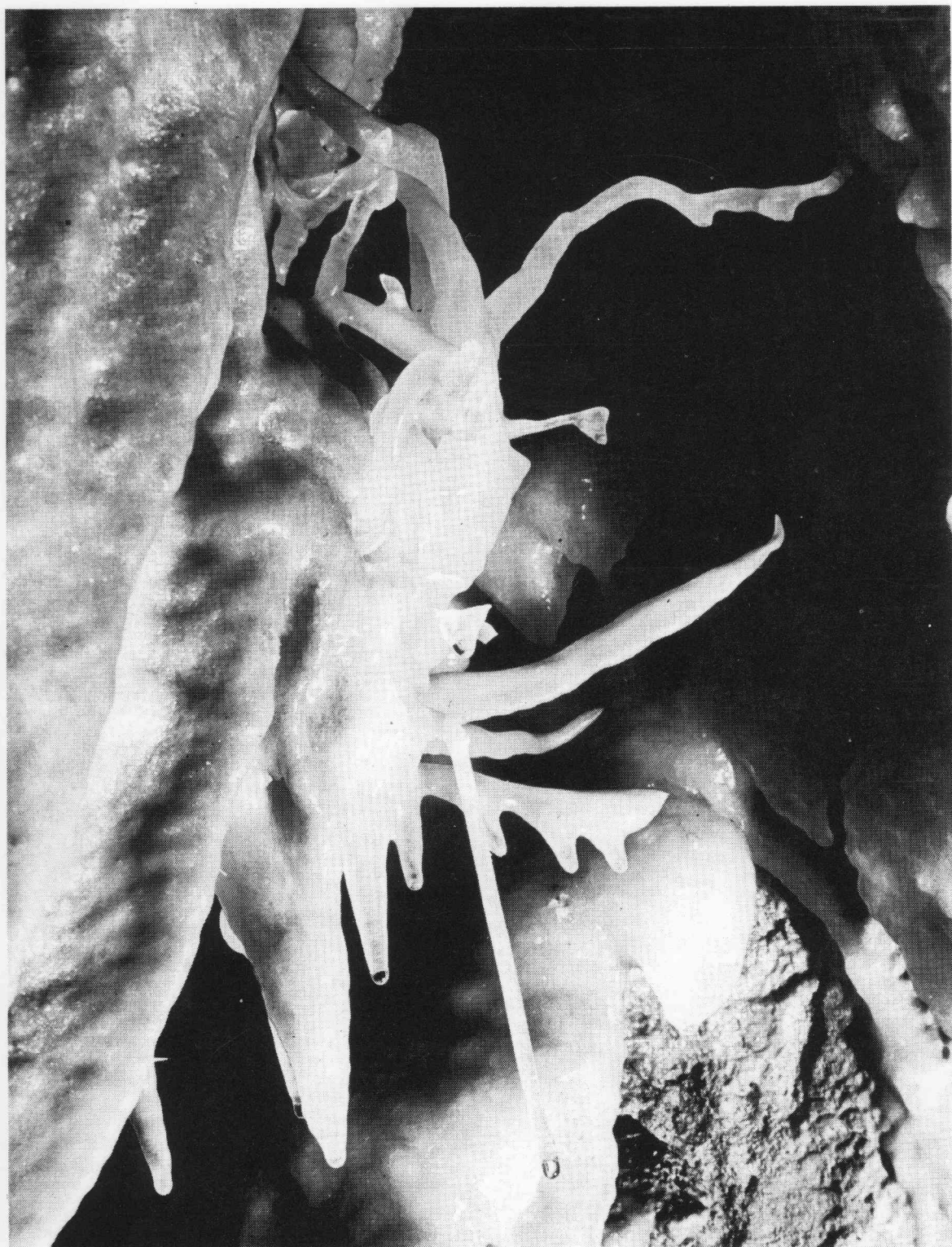
VOLUME 23(supplement)

1985

Helictite

JOURNAL OF AUSTRALASIAN CAVE RESEARCH

CUMULATIVE INDEX 1962-1984



Helictite, Bouverie Cave, Wombeyan, N.S.W.
Photograph L.D. Field

HELICTITE

Journal of Australasian Cave Research

ISSN: 0017-9973

Helictite was founded by Edward A. Lane and Aola M. Richards in 1962.

This Journal was (and is) intended to be wide ranging in scope from the scientific study of caves and their contents, to the history of caves and cave areas and the technical aspects of cave study and exploration. The territory covered is Australasia in the truest sense— Australia, New Zealand, the near Pacific Islands, New Guinea and surrounding areas, Indonesia and Borneo.

In 1974 the Speleological Research Council Limited agreed to support the Journal with financial assistance and in 1976 took over full responsibility for its production.

The Board of Management

Foundation Editors

Edward A. Lane

Aola M. Richards

Editors

Guy C. Cox

Julia M. James

Business Management

David Martin

Production Management

Bruce R. Welch



Speleological Research Council Limited

The Speleological Research Council Limited, the publisher and owner of Helictite, is a non-profit limited liability company incorporated in May 1964. The aims of the Speleological Research Council Limited are:-

To explore and chart and organize and promote the exploration and charting of caves and cave systems.

To promote, support and assist in the scientific evaluation and investigation of caves and to foster speleology as a science and a sport.

To promote and to assist in the promotion of speleology and speleological Societies and to assist such Societies with grants of money and otherwise.

Other publications by SRC Ltd:

CAVES OF THE NULLARBOR. T.M.L. Wigley and J.R. Dunkley 1968.

- a review of Speleological Investigations in the Nullarbor Plain.

THE EXPLORATION AND SPELEOGEOGRAPHY OF MAMMOTH CAVE, JENOLAN.

J.R. Dunkley 1972. - a detailed history and description.

CAVES THROUGH THE AGES. G. Hangay, J.M. James & M. Dorrell 1974.

- a colouring book for children.

PAPUA NEW GUINEA SPELEOLOGICAL EXPEDITION NSRE 1973. J.M. James 1974.

- the report of the 1973 Niugini Speleological Research Expedition to the Muller Range.

A BIBLIOGRAPHY OF THE JENOLAN CAVES. PART ONE: SPELEOLOGICAL LITERATURE.

J.R. Dunkley 1976. - a detailed reference list.

THE CAVES OF JENOLAN, 2: THE NORTHERN LIMESTONE. B.R. Welch (ed) 1976.

Helictite

JOURNAL OF AUSTRALASIAN CAVE RESEARCH

VOLUME 23(supplement)

1985

CUMULATIVE INDEX. VOLUMES 1-22 (1962 TO 1984)

Compiled by A.P. Spate

Edited by Julia M. James and D. J. Martin

CONTENTS

Introduction S2

Papers Index S3

Abstracts Index S10

Reviews Index S17

Subject Index S20

Geographic Index S23

"HELICTITE", Volume 23, 1985 consists of two issues. Price per volume Aust. \$10.00 post paid. "HELICTITE" is printed and published by the Speleological Research Council Ltd. Except for abstracting and review, the contents may not be reproduced without permission of the Editors. All correspondence to: PO Box 183, Broadway, N.S.W. 2007.

CUMULATIVE INDEX - VOLUMES 1 TO 22 (1962 TO 1984)

Compiled by A.P.Spate

This index is divided into three sections which are author indexes of the papers, abstracts and reviews published in Helictite since its inception. Subject and geographic indexes are provided cross-referenced back to the major listings. There has been some blurring of the distinctions between papers, abstracts and reviews over the years and the user must make some allowance for the occasional idiosyncratic pigeonholing that may have occurred. Letters, for example, are included in the papers; abstracters have sometimes allowed a measure of review to creep into their work. Notices of meetings, formation of new organisations and similar events have not been included.

Papers index

Papers are arranged alphabetically in order of senior author; junior authors appear in the alphabetical list and are cross-referenced, by paper number, back to the senior author. Occasional references to relevant notes, addenda, errata and corrections elsewhere are sometimes added in parenthesis. Obvious typographical errors have been corrected where encountered.

Abstracts index

Abstracts are arranged alphabetically in order of senior author; there is no cross-referencing of junior authors. The citations take the form:

- Author(s)
- Year of original publication
- Title of paper
- Journal citation as it appeared in Helictite (there are inconsistencies)
- The volume and page(s) of the Helictite reference and the initials of the abstracter are in parenthesis at the end of the citation.

Reviews index

Reviews are arranged and cited in a similar fashion to the abstracts.

Subject index

Under each subject entry are separate numerical references to the paper, abstract and review indexes respectively. Selection of appropriate "slots" for the various entries sometimes presented problems. For example the differences between fossils, sub-fossils and bone material are obviously blurred in the field - and in the literature.

Geographic index

This is an index to the papers, abstracts and reviews under both general and local headings in a similar fashion to the subject index. Caves are not necessarily cross-referenced in the geographic index unless the cave is the major subject or its name forms part of the title.

Abstracters and reviewers

EGA	E.G.ANDERSON	PDD	P.D.DWYER	EAL	E.A.LANE	CNS	C.N.SMITHERS
EBB	E.B.BRITTON	HJD	H.J.DYSON	DCL	D.C.LOWERY	PWW	P.W.WILLIAMS
GCC	G.C.COX	GSH	G.S.HUNT	CDO	C.D.OLLIER	XX	UNKNOWN
ID	I.DOUGLAS	RE	R.ELLIS	AMR	A.M.RICHARDS		
JRD	J.R.DUNKLEY	JNJ	J.N.JENNINGS	CAR	C.A.ROBERTS		

Publication details

Vol 1(1)1-20 (2)1-20* (3)42-60 (4)61-82	Vol 6(1)1-20 (2)21-40 (3)41-60 (4)61-80	Vol 11(1)1-24 (2)25-44 (3)45-76 (4)77-96	Vol 21(1)1-32 (2)33-66 Vol 22(1)1-30 (2)31-56
Vol 2(1)1-56 (2)57-80 (3)81-102 (4)103-134	Vol 7(1)1-20 (2)21-40 (3)41-60 (4)67-86	Vol 12:1-52 Vol 13:1-36 Vol 14(1)1-50 (2)1-63*	Vol 15(1)1-38 (2)1-41* Vol 16(1)1-49 (2)50-87
Vol 3(1)1-20 (2)21-42 (3)43-62 (4)63-90	Vol 8(1)1-26 (2)27-48 (3)49-68 (4)69-91	Vol 17(1)1-46 (2)47-74 Vol 18(1)1-28 (2)29-62	Vol 19(1)1-35 (2)36-72 Vol 20(1)1-31 (2)32-68
Vol 4(1)1-22 (2)23-50 (3)51-70 (4)71-90	Vol 9(1)1-26 (2)27-48 (3)49-70 (4)71-90		
Vol 5(1)1-22 (2)23-44 (3)45-68 (4)69-90	Vol 10(1-2)1-46 (3)47-72 (4)73-92		

* Vol 1(2), Vol 14(2) and Vol 15(2) are not serially paginated from the start of the respective volume.

Obituaries

Herbert Womersley (1889-1962) (1:42); Paul A. Remy (1894-1962) (1:42); Ludwig Glauert (1879-1963) (4:27); Rene Jeannel (1880-1965) (4:24); Gerard Platten (1899-1970) (8:48); Joe Jennings (1916-1984) (22:35-42).
See also E.A. Lane 1966, paper 89.

HELICTITE CUMULATIVE INDEX FOR VOLUMES 1-22 (1962 TO 1984)

Papers - Alphabetical Listing of Authors

- 1 ANDERSON, E.G., 1964, Nullarbor Expeditions, 1963-4, 2:121-134 + map
- 2 ANDERSON, E.G., 1973, Results of surface levelling at Bungonia Caves, NSW, 11:92-95
- 3 ARCHER, M., 1972, Phascolarctos (Marsupialia, Vombatoidea) and an associated fossil fauna from Koala Cave near Yanchep, Western Australia., 10:49-59
- BAO HAOSHENG, see JENNINGS, J.N. et al. 80
see also JENNINGS, J.N. and BAO HAOSHENG 81
- 4 BASTIAN, L., 1964, Morphology and development of caves in the southwest of Western Australia, 2:105-119
- BOURKE, R.M., see JACOBSEN, G. and R.M. BOURKE 53
- 5 BRIDGE, P.J., 1975, Paleo-distribution of Macroderma gigas in the southwest of Western Australia, 13:34-36
- 6 BRIDGE, P.J., L.C. HODGE, N.L. MARSH and A.G. THOMAS, 1975, Chiropterite deposits in Moorba Cave, Jurien Bay, Western Australia, 13:19-32
- BRUSH, J.B., see WEBB, J.A. and J.B. BRUSH 145
- 7 CALDWELL, J.R., A.G. DAVEY, J.N. JENNINGS and A.P. SPATE, 1982, Colour in some Nullarbor Plain speleothems, 20:3-10
- COLEMAN, D.J., see LAKE, P.S. and D.J. COLEMAN 86
- 8 CONNOLLY, M.D., 1983, Reassessment of cave ages at Isaacs Creek, 21:64-65
- 9 CONNOLLY, M. and G. FRANCIS, 1979, Cave and landscape evolution at Isaacs Creek, New South Wales, 17:5-24
- 10 COX, G. 1984, Phototrophic stalagmites at Jenolan Caves, NSW, - Letter, 22:54-56
- 11 COX, G. and B.R. WELCH, 1984, Spider Cave, Jenolan - a fault controlled system, 22:43-53 + map
- CURTIS, R. see JENNINGS, J.N. et al. 82
- 12 DAVEY, A.G. (ed), 1977, Evaluation criteria for the cave and karst heritage of Australia, 15(2):1-41 (pub. 1984)
- DAVEY, A.G. see CALDWELL, J.R. et al. 7
- 13 DOUGLAS, I., 1965, Calcium and magnesium in karst waters, 3:23-36 (see also Errata 3:22)
- 14 DUNKERLEY, D.L., 1981, Chemistry of a tropical tufa-depositing spring near Mt. Etna, Queensland: a preliminary analysis, 19:15-21
- 15 DUNKERLEY, D.L., 1981, Determination of karst water aggressiveness by artificial saturation: a comparison of results obtained using limestone and reagent grade calcium carbonate, 19:68-72
- 16 DUNLOP, B.T., 1967, An historical sketch of the Jenolan Caves, New South Wales, from discovery to 1932, 5:47-61
- 17 DWYER, P.D., 1965, Bat erosion in Australian limestone caves, 3:85-90
- 18 DWYER, P.D., 1966, Observations on the eastern horse-shoe bat in north-eastern New South Wales, 4:73-82
- 19 DWYER, P.D., 1968, New records of the False Vampire Bat in Queensland, 6:36-40
- 20 DWYER, P.D. and E. HAMILTON-SMITH, 1965, Breeding caves and maternity colonies of the bent-winged bat in south-eastern Australia, 4:3-21
- 21 ELLAWAY, M. and B. FINLAYSON, 1984, A preliminary survey of water chemistry in the limestones of the Buchan area under low flow conditions, 22:11-20

- 22 FINLAYSON, B., 1981, Underground streams on acid igneous rocks in Victoria, 19:5-14
- 23 FINLAYSON, B., 1982, Granite caves in Girraween National Park, southeast Queensland, 20:53-59
- FINLAYSON, B. see ELLAWAY, M. and B. FINLAYSON 21
- 24 FRANCIS, G., 1973, Evolution of the Wellington Caves Landscape, 11:79-91
- 25 FRANCIS, G., 1982, Metastrengite in Loniu Cave, Manus Island, 20:29-31
- 26 FRANCIS, G. and R.A.L. OSBORNE, 1983, Comment - reassessment of cave ages at Isaacs Creek, 21:66
- FRANCIS, G., see CONNOLLY, M. and G. FRANCIS 9
 JAMES, J.M. et al. 55
 REIDER, L.G. et al. 130
- 27 FRANK, R.M., 1969, The clastic sediments of Douglas Cave, Stuart Town, New South Wales, 7:3-13
- 28 FRANK, R.M., 1971, The clastic sediments of the Wellington Caves, New South Wales, 9:3-26 + 3 maps
- 29 FRANK, R.M., 1972, Sedimentary and morphological development of the Borenore Caves, New South Wales (Part I), 10:75-91
- 30 FRANK, R.M., 1973, Sedimentary and morphological development of the Borenore Caves, New South Wales (Part II), 11:27-44 (plus addendum 11:26)
- 31 FRANK, R.M., 1974, Sedimentary development of the Walli Caves, New South Wales, 12:3-30
- 32 FRANK, R.M. and J.N. JENNINGS, 1978, Development of a subterranean meander cutoff: the Abercrombie Caves, New South Wales, 16:71-85 + map (see also Errata 17:4)
- 33 GALLUS, A., 1968, Parietal art in Koonalda Cave, Nullarbor Plain, South Australia, 6:43-49
- 34 GILLIESON, D.S., 1981, Scanning electron microscope studies of cave sediments, 19:22-27
- 35 GILLIESON, D.S. and M.-J. MOUNTAIN, 1981, Geomorphology and past environments at Nombe Rockshelter, Simbu Province, Papua New Guinea, 19:40-47
- GILLIESON, D.S. see SPATE, A.P. and D.S. GILLIESON 139
- 36 GOEDE, A., 1967, Tasmanian Cave Fauna: character and distribution, 5:71-86
- 37 GOEDE, A., 1973, Hydrological observations at the Junee Resurgence and a brief regional description of the Junee Area, Tasmania, 11:3-24
- 38 GOEDE, A., 1981, Variations in hardness of cave drips at two Tasmanian sites, 19:57-67 (see also Errata 20:28)
- 39 GOEDE, A., R. HARMON and K. KIERNAN, 1979, Sea caves of King Island, 17:51-64
- 40 GOEDE, A., D.C. GREEN and R.S. HARMON, 1982, Isotopic composition of precipitation, cave drips and actively forming speleothems at three Tasmanian cave sites, 20:17-27
- 41 GRAHAM, A., 1971, A preliminary note on a cave in basalt, Bunya Mountains National Park, Queensland, 9:73-76 (see also note 9:90)
- 42 GRAY, M.R., 1973, Survey of the spider fauna of Australian Caves, 11:47-75
- GREEN, D.C. see GOEDE, A. et al. 40
- 43 HALBERT, E.J.M., 1982, Evaluation of carbon dioxide and oxygen data in cave atmospheres using the Gibbs triangle and the cave air index, 20:60-68
- 44 HALBERT, E.J.M., 1983, Prediction of climatic temperature data for karst areas in the Central and Southern Tablelands in New South Wales, 21:55-63
- 45 HALBERT, E.J.M. and N.A. MICHIE, 1971, The use of titanium tetrachloride in the visualisation of air movement in caves, 9:85-88
- 46 HALL, L.S., 1970, A collection of the bat Chalinolobus morio (Gray), from the Nullarbor Plain, Western Australia, 8:51-57

- 47 HAMILTON-SMITH, E., 1966, Caves of the Chillagoe District, north Queensland, 4:53-59
 HAMILTON-SMITH, E. see DWYER, P.D. and E. HAMILTON-SMITH 20
- 48 HANDEL, M.L. and J.M. JAMES, 1977, A chemical investigation of some ground waters of the Northern Limestone at Jenolan Caves, 15:29-38
 HARMON, R. see GOEDE, A. et al. 39
 see also GOEDE, A. et al. 40
 HEERS, G. see OLLIER, C.D. et al. 118
 see also OLLIER, C.D. et al. 119
- 49 HILL, A.L., 1984, The origin of Kelly Hill Caves, Kangaroo Island, SA, 22:6-10; with explanatory note by J.N. JENNINGS, (published posthumously, first read to CEG(SA) 9/4/1957)
 HILL, A.L. see WIGLEY, T.M.L. and A.L. HILL 148
 HODGE, L.C. see BRIDGE, P.J. et al. 6
 HOLDSWORTH, D.K. see OLLIER, C.D. and D.K. HOLDSWORTH 113
 see also OLLIER, C.D. and D.K. HOLDSWORTH 114
 OLLIER, C.D. and D.K. HOLDSWORTH 115
 OLLIER, C.D. and D.K. HOLDSWORTH 116
 OLLIER, C.D. and D.K. HOLDSWORTH 117
 OLLIER, C.D. et al. 118
 OLLIER, C.D. et al. 119
- 50 HUNT, G.S., 1970, The origin and development of Mullamullang Cave, N37, Nullarbor Plain, Western Australia, 8:3-26
- 51 HUNT, G.S., 1974, Dr. Robert Broom, Taralga, 12:31-52
- 52 INGRAM, B.S., 1969, Sporomorphs from the desiccated carcasses of mammals from Thylacine Hole, Western Australia, 7:62-66
- 53 JACOBSON, G. and R.M. BOURKE, 1975, Observations of karst hydrology in the Waga Valley, Southern Highlands District, Papua New Guinea, 13:3-18
- 54 JAMES, J.M., 1980, Water chemistry of the Atea Kananda and the related drainage area, 18:8-24
- 55 JAMES, J.M., G. FRANCIS and J.N. JENNINGS, 1978, Bungonia Caves and Gorge; a new view of their geology and geomorphology, 16:53-63 (see also Errata 17:4)
- 56 JAMES, J.M., R.H. KING and N.R. MONTGOMERY, 1976, Atea Kanada, 14(2):5-26
- 57 JAMES, J.M. and N.R. MONTGOMERY, 1976, The geology, geomorphology, hydrology and development of Odyssey Cave, Bungonia, New South Wales, 14:5-30
 JAMES, J.M. see HANDEL, M.L. and J.M. JAMES 48
 see also SPATE, A.P. et al. 140
- 58 JENNINGS, J.N., 1963, Water sampling at Yarrangobilly, New South Wales, 1(2):3-7
- 59 JENNINGS, J.N., 1963, Ridge Mine Pot, Wyanbene, New South Wales, 1(2):16-17 + map
- 60 JENNINGS, J.N., 1963, Geomorphology of the Dip Cave, Wee Jasper, New South Wales, 1:43-58 + 3 maps
- 61 JENNINGS, J.N., 1964, Geomorphology of Punchbowl and Signature Caves, Wee Jasper, New South Wales, 2:57-71 + 7 maps
- 62 JENNINGS, J.N., 1965, A note on cloudmaking by caves, 3:37-38
- 63 JENNINGS, J.N., 1965, Bungonia Caves and rejuvenation, 3:79-84
- 64 JENNINGS, J.N., 1966, Jirí V. Daneš and the Chillagoe Caves District, 4:83-87
- 65 JENNINGS, J.N., 1966, Murray Cave, Cooleman Plain, New South Wales, 5:3-11 + map
- 66 JENNINGS, J.N., 1967, Further remarks on the Big Hole, near Braidwood, New South Wales, 6:3-9
- 67 JENNINGS, J.N., 1968, Geomorphology of Barber Cave, Cooleman Plain, New South Wales, 6:23-29 + map

- 68 JENNINGS, J.N., 1968, Recent Australian contributions on pipes, foibe, and climatic history from speleological evidence, 6:50-56 N.A. 141)
- 69 JENNINGS, J.N., 1969, River Cave, Cooleman Plain, Kosciusko National Park, and its hydrological relationships, 7:69-85 + map
- 70 JENNINGS, J.N., 1970, Small cavities in the Nullarbor Plain, 8:43-47 (see also abs. 80 LOWRY, D.C., 1969 in 8:28)
- 71 JENNINGS, J.N., 1970, Cooleman and Right Cooleman Caves, Kosciusko National Park, and the shift of risings, 8:71-77 + map
- 72 JENNINGS, J.N., 1972, Observations at the Blue Waterholes, March 1965 - April 1969 and limestone solution on Cooleman Plain, NSW, 10:3-46
- 73 JENNINGS, J.N., 1978, A notable limestone hydrology investigation in Austria - Letter, 16:86-87
- 74 JENNINGS, J.N., 1979, Hardness controls of cave drips, Murray Cave, Cooleman Plain, Kosciusko National Park, 17:30-38
- 75 JENNINGS, J.N., 1979, An unusual sandstone cave from northern Australia, 17:39-45
- 76 JENNINGS, J.N., 1980, The origin of Deepdene near Augusta, Western Australia, 18:25-27
- 77 JENNINGS, J.N., 1982, Principles and problems in reconstructing karst history, 20:37-52
- 78 JENNINGS, J.N., 1983, Further studies at the Blue Waterholes, Cooleman Plain, NSW, 1969-77. Part I. Climate and Hydrology, 21:3-20
- 79 JENNINGS, J.N., 1983, Further studies at the Blue Waterholes, Cooleman Plain, NSW, 1969-77, Part II. Water chemistry and Discussion, 21:35-54
- 80 JENNINGS, J.N., BAO HAOSHENG and A.P. SPATE, 1980, Equilibrium versus events in river behaviour and blind valleys at Yarrangobilly, New South Wales, 18:39-54
- 81 JENNINGS, J.N. and BAO HAOSHENG, 1980, Determining doline origins: a case study, 18:3-7 + map
- 82 JENNINGS, J.N., I. NANKIVELL, C. PRATT, R. CURTIS and J. MENDUM, 1969, Drought and Murray Cave, Cooleman Plain, New South Wales, 7:23-38 + map
- 83 JENNINGS, J.N. and M.M. SWEETING, 1966, Old Napier Downs Cave, West Kimberley, WA, 4:25-32
- JENNINGS, J.N. see CALDWELL, J.R. et al 7
see also FRANK, R.M. and J.N. JENNINGS 32
JAMES, J.M. et al 55
REIDER, L.G. et al 130
SPATE, A.P. et al 140
- JOYCE, E.B. see WEBB, J.A. and E.B. JOYCE 146
- 84 KIERNAN, K., 1982, Glaciation and karst in Tasmania: review and speculations, 20:11-16
- KIERNAN, K. see GOEDE, A. et al 39
- KING, R.H. see JAMES, J.M. et al 56
- 85 LAIRD, M.G., 1963, Morphology of New Zealand limestone caves, 1:63-68
- 86 LAKE, P.S. and D.J. COLEMAN, 1977, On the subterranean syncarids of Tasmania, 15:12-17
- 87 LANE, E.A., 1962, Observations on caves - particularly those of South Australia - 1862, 1:15-20. (In main a review of WOODS, J.E., 1862, Geological observations in South Australia: Principally in the District south-east of Adelaide, Longman et al, London)
- 88 LANE, E.A., 1964, Bat echolocation - a review, 2:100-102
- 89 LANE, E.A., 1966, Jenolan obituaries, W.L. HAVARD, Miss HAZEL WIBURD, A.J. PERIER and J. O'CONNOR, 4:62-63
- 90 LANE, E.A. and A.M. RICHARDS, 1963, The Discovery, Exploration and Scientific Investigation of the Wellington Caves, New South Wales, 2:1-53 + map

- 91 LANE, E.A. and A.M. RICHARDS, 1966, Hand paintings in caves- With special reference to Aboriginal hand stencils from caves on the Nullarbor Plain, southern Australia, 4:33-50
- 92 LANE, E.A. and A.M. RICHARDS, 1967, Burramys parvus Broom, a living fossil, 5:30-34
LANE, E.A. see RICHARDS, A.M. and E.A. LANE 137
- 93 LOWRY, D.C., 1964, The development of Cocklebidy Cave, Eucla Basin, Western Australia, 3:15-19 + map
- 94 LOWRY, D.C., 1966, Gecko Cave, (N51), Eucla Basin, Western Australia, 4:60-62
- 95 LOWRY, D.C., 1967, The Cave Spring Cave systems, Kimberley Division of Western Australia, 5:62-68
- 96 LOWRY, D.C., 1967, Halite speleothems from the Nullarbor Plain, Western Australia, 6:14-20
- 97 LOWRY, D.C., 1970, Lake level fluctuations in Cocklebidy Cave, Nullarbor Plain, Western Australia, 8:52-62 (see also Corrections, 8:78)
- 98 LOWRY, D.C. and J.W.J. LOWRY, 1967, Discovery of a Thylacine (Tasmanian Tiger) carcass in a cave near Eucla, W.A., 5:25-29
- 99 LOWRY, J.W.J. and D. MERRILEES, 1969, Age of the desiccated carcass of a Thylacine (Marsupialia, Dasyuroidea) from Thylacine Hole, Nullarbor Region, Western Australia, 7:15-16
LOWRY, J.W.J. see LOWRY, D.C. and J.W.J. LOWRY 98
- 100 MARKER, M.E., 1976 A geomorphological assessment of the Chillagoe karst belt, Queensland, 14:31-49
MARSH, N.L. see BRIDGE, P.J. et al 6
- 101 MARTIN, D.J., 1983, Mechanical testing and evaluation of screwlinks, 21:21-24
MENDUM, J. see JENNINGS, J.N. et al 82
- 102 MERRILEES, D., 1970, A check on the radiocarbon dating of desiccated thylacine (Marsupial "wolf") and dog tissue from Thylacine Hole, Nullarbor Region, Western Australia, 8:39-42
- 103 MERRILEES, D., 1971, Resemblances between the extinct "Cave Goat" (Eutheria, Bovidae) of the Balearic Islands and phalangeroid marsupials, 9:51-60
MERRILEES, D. see LOWRY, J.W.L. and D. MERRILEES 99
- 104 MICHIE, N.A., 1984, Determination of the causes of air flow in Coppermine Cave, Yarrangobilly, 22:21-30
MICHIE, N.A. see HALBERT, E.J. and N.A. MICHIE 45
- 105 MOORE, B.P., 1964, Present-day cave beetle fauna in Australia, a pointer to past climatic change, 3:3-9
- 106 MOORE, B.P., 1966, Australian Biospeleological Expedition to New Caledonia, 1965-1966, 4:88
- 107 MONTGOMERY, N.R., 1976, Protecting ropes from abrasion in single rope techniques, 14(2):49-62
MONTGOMERY, N.R. see JAMES, J.M. et al 56
see also JAMES, J.M. and N.R. MONTGOMERY 57
- MOUNTAIN, M.-J. see GILLIESON, D.S. and M.-J. MOUNTAIN 35
- NANKIVELL, I. see JENNINGS, J.N. et al 82
- 108 OLLIER, C.D., 1963 The lava caves of Victoria, 1:69-77
- 109 OLLIER, C.D., 1963, The origin of limestone caves, 1(2):8-12
- 110 OLLIER, C.D., 1964, Carbonate mineralogy in caves, 2:95-99
- 111 OLLIER, C.D., 1966, Speleochronology, 5:12-21
- 112 OLLIER, C.D., 1981, Gulemwawaya: a cave in welded tuff at Budoya, Fergusson Island, Papua New Guinea, 19:33-34

- 113 OLLIER, C.D. and D.K. HOLDSWORTH, 1968, Caves of Kiriwina, Trobriand Islands, Papua, 6:63-72
- 114 OLLIER, C.D. and D.K. HOLDSWORTH, 1969, Caves of Vakuta, Trobriand Islands, Papua, 7:50-61
- 115 OLLIER, C.D. and D.K. HOLDSWORTH, 1970, Some caves of Kitava, Trobriand Islands, Papua, 8:29-38
- 116 OLLIER, C.D. and D.K. HOLDSWORTH, 1970, Cave paintings from Kitava, Trobriand Islands, Papua, 8:79-91
- 117 OLLIER, C.D. and D.K. HOLDSWORTH, 1971, Further caves of Kiriwina, Trobriand Islands, Papua, 9:77-84
- 118 OLLIER, C.D., D.K. HOLDSWORTH and G. HEERS, 1971, Caves of Kaileuna and Tuma, Trobriand Islands, 9:29-48
- 119 OLLIER, C.D., D.K. HOLDSWORTH and G. HEERS, 1971, Further caves of Kitava, Trobriand Islands, Papua, 9:61-70
- 120 OLLIER, C.D. and C.F. PAIN, 1978, Caves of Woodlark Island, Papua New Guinea, 16:64-70
- 121 OLLIER, C.D. and C.F. PAIN, 1980, Caves, graves and folklore of Normanby Island, Papua New Guinea, 18:55-62
- OLLIER, C.D. see PAIN, C.F. and C.D. OLLIER 125
see also PAIN, C.F. and C.D. OLLIER 126
- 122 OSBORNE, R.A.L., 1978, Structure, sediments and speleogenesis at Cliefden Caves, New South Wales, 16:3-32
- 123 OSBORNE, R.A.L. 1979, Preliminary report: caves in Tertiary basalt, Coolah, NSW, 17:25-29
- 124 OSBORNE, R.A.L., 1981, Towards an air quality standard for tourist caves: Studies of carbon dioxide enriched atmospheres in Gaden-Coral Cave, Wellington Caves, NSW, 19:48-56
- OSBORNE, R.A.L. see FRANCIS, G. and R.A.L. OSBORNE 26
- 125 PAIN, C.F. and C.D. OLLIER, 1978, Caves and karst of Misima Island, Papua New Guinea, 16:40-49
- 126 PAIN, C.F. and C.D. OLLIER, 1981, Damawewe Cave, Alotau, Papua New Guinea, 19:28-32
- PAIN, C.F. see OLLIER, C.D. and C.F. PAIN 120
see also OLLIER, C.D. and C.F. PAIN 121
- 127 PARKER, F., 1970, Notes on a large cave in the Keriaka Limestone, Bougainville Island, Solomon Islands, 8:63-67
- 128 POULTER, N., 1977, A new development in solving problems of large scale speleophotography - "Diprotodon Poulter", 15:3-11
- PRATT, C. see JENNINGS, J.N. et al 82
- 129 PYBUS, J., 1969, Puketiti Flower Cave, New Zealand, 7:42
- 130 REIDER, L.G., J.N. JENNINGS and G. FRANCIS, 1977, Frustration and New Year Caves and their neighbourhood, Coolman Plain, NSW, 15:18-28
- 131 RICHARDS, A.M., 1962, Cave animals and their environment, 1:3-13
- 132 RICHARDS, A.M., 1963, The subterranean freshwater fauna of North West Cape, Western Australia, 1:78-82
- 133 RICHARDS, A.M., 1965, Movements of Rhabdophoridae (Orthoptera) in caves at Waitomo, New Zealand, 3:65-78
- 134 RICHARDS, A.M., 1966, Activity rhythms in Rhabdophoridae (Orthoptera) from Australia and New Zealand, 4:64-66
- 135 RICHARDS, A.M., 1967, Cockroaches (Blattodea) from Australian Caves, 5:35-44
- 136 RICHARDS, A.M., 1972, The migration of cave arthropods across the Nullarbor Plain, southern Australia, 10:60-72
- 137 RICHARDS, A.M. and E.A. LANE, 1966, Exotic Collembola from Jenolan Caves, NSW, 4:88-89

- RICHARDS, A.M. see LANE, E.A. and A.M. RICHARDS 90
 see also LANE, E.A. and A.M. RICHARDS 91
 LANE, E.A. and A.M. RICHARDS 92
- 138 **SEXTON, R.T.**, 1965, Caves of the coastal areas of South Australia, 3:45-59 + 2 maps
- SMITH, D.I. see SPATE, A.P. et al 140
- 139 **SPATE, A.P. and D.S. GILLIESON**, 1984, Joe Jennings, an obituary and the publications on karst by Joseph N. JENNINGS, 22:35-42
- 140 **SPATE, A.P., J.N. JENNINGS, D.I. SMITH and J.M. JAMES**, 1976, A triple dye tracing experiment at Yarrangobilly, 14(2):27-47
- SPATE, A.P. see CALDWELL, J.R. et al 7
 see also JENNINGS, J.N. et al 80
- SWEETING, M.M. see JENNINGS, J.N. and M.M. SWEETING 83
- THOMAS, A.G. see BRIDGE, P.J. et al 6
- 141 **WAKEFIELD, N.A.**, 1969, Interpretation of data from McEachern's Cave, SW Victoria, 7:17-20
- 142 **WALSH, W.P.**, 1964, Unexplained markings in Kintore and Cutta Cutta Caves, Northern Territory, Australia, 2:83-91
- 143 **WARILD, A.T.**, 1980, A review of the cord technique (La Technique Cordelette), 18:31-38
- 144 **WEBB, J.A.**, 1979, Morphology and origin of Holy Jump Lava Cave, south-eastern Queensland, 17:65-74
- 145 **WEBB, J.A. and J.B. BRUSH**, 1978, Quill anthodites in Wyanbene Cave, Upper Shoalhaven District, New South Wales, 16:33-39
- 146 **WEBB, J.A. and E.B. JOYCE**, 1983, Taylor Creek Silcrete Cave, north of Melbourne, central Victoria, 21:25-32
- WELCH, B.R. see COX, G. and B.R. WELCH 11
- 147 **WIGLEY, T.M.L.**, 1969, Cave microclimate: A note on moisture, 7:43-49
- 148 **WIGLEY, T.M.L. and A.L. HILL**, 1967, Elevations in the Madura area, Western Australia, 6:10-13

HELICITITE CUMULATIVE INDEX FOR VOLUMES 1-22 (1964-1984).

Abstracts - Alphabetical Listing of Authors

- 1 ALEXANDER, C.P., 1962, A new cave-inhabiting crane-fly (Tipulidae, Diptera) from New Zealand, N.Z.J.Sci., 5:137-40; (1:19 AMR)
- 2 ANDRIEUX, C., 1962, Etude Cristallographique des Edifices Stalactitiques, Bull.Soc.Franc.Miner.Crist., 85:67-76; (5:90 EGA)
- 3 ANDRIEUX, C., 1963, Etude Cristallographique des Pavements Polygonaux des Coutees Polycrystallines de Calcite des Grottes, Bull.Soc.Franc.Miner.Crist., 86:135-138 (in French); (4:89-90 GSH)
- 4 ANON, 1965, Palygorskite or Mountain Leather?, N.Z.Spel.Soc.Bull., 3:276-78; (5:24 EAL)
- 5 ANON, 1968, Caverns hamper drilling of Phillips Gulf Well, Aust.Fin.Rev., Feb.29 (6:42 EAL)
- 6 ANON, 1968, Western Australian Mines Department Annual Report for 1967, (7:61 DCL)
- 7 BALÁZS, D., 1966, Nusa Barung, egy Trópusi Karsztzigtet (Nusa Barung), Karszt és Barlang., II:55-60, in Hungarian, abstract translated from German; (7:85-86 JNJ)
- 8 BALÁZS, D., 1967, Indonézia Karsztbarlangjai (Karst caves of Indonesia), Karszt és Barlang., I-II:7-10, in Hungarian, abstract translated from German; (7:86 JNJ)
- 9 BARRETT, P.J., 1963, The development of Kairimu Cave, Marakopa District, south-west Auckland; with an appendix on spores and pollen grains by W.F.HARRIS, N.Z.J.Geol.Geophys., 6:288-98; (2:93 EAL)
- 10 BEIER, M., 1967, Some Psuedoscorpionidea from Australia, chiefly from caves, Aust.Zool., 14:199-205; (6:35 AMR)
- 11 BEIER, M., 1968, Some cave-dwelling Psuedoscorpionidea from Australia and New Caledonia, Rec.S.Aust.Mus., 15:757-65; (7:66 AMR)
- 12 BEIER, M., 1969, Neue psuedoskorpione aus Australien, Ann.Naturhistor.Mus.Wien, 73:171-87; (8:50 AMR)
- 13 BEIER, M., 1971, A new Chthoniid psuedoscorpion from Western Australia, J.Aust.ent.Soc., 10:233-34; (10:74 AMR)
- 14 BERRY, A.J., 1965, Reproduction and breeding fluctuations in Hydrocena monterosaticana. A Malayan limestone archaeogastropod, Proc.Zool.Soc.Lond., 144:219-27; (4:32 AMR)
- 15 BRIDGE, P.J., 1973, Guano minerals from Murra-el-elevyn Cave, Western Australia, Mineralogical Mag., 39:467-69; (12:2 EAL)
- 16 BRIDGE, P.J., 1974, Guanine and Uricite, two new organic minerals from Peru and Western Australia, Mineralogical Mag., 39:889-90; (12:2 EAL)
- 17 BROUGHTON, P.L., 1971, The stalactite group of cave minerals, NSS News, 29:102; (9:88 EAL)
- 18 BRITTON, E.B., 1961, New genera of beetles (Carabidae) from New Zealand, Ann.Mag.Nat.Hist., Ser.13, 4:665-72; (1:14 XX)
- 19 BRITTON, E.B., 1963, New Carabidae (Coleoptera) from New Zealand caves, Ann.Mag.Nat.Hist., Ser.13, 6:625-34; (3:42 AMR)
- 20 BULMER, S., 1964, Radiocarbon dates from New Guinea, J.Polynesian Soc., 73:327-28; (5:70 EAL)
- 21 CHALKER, L., 1971, Limestone in the Jenolan Caves Area, Rec.Geol.Surv. NSW, 13:53-60; (11:2 EAL)
- 22 COOK, D.L., 1963, The fossil vertebrate fauna of Strongs Cave, Boranup, Western Australia, W.Aust.Nat., 8:153-62; (1:62 AMR)

- 23 CRAWFORD, A.R., 1965, The geology of Yorke Peninsula, Dept of Mines, Geol.Surv.S.Aust.Bull.39, 96pp; (4:2 EAL)
- 24 CHRISTIANSEN, K., 1962, Proposition for the classification of cave animals, Spelunca (4e ser.), Memoires, 2:76-78; (3:19-20 AMR)
- 25 DARTNALL, A.J., 1970, Some Tasmanian Chthoniid pseudoscorpions, Pap.Proc.Roy.Soc.Tas., 104:65-68; (9:50 AMR)
- 26 DEW, B.B. and B. McMILLAN, 1970, Seasonal variation of Polychromophilus melanipherus (Sporozoa: Haemoproteidae) in the Bent-winged bat Miniopterus schreibersii (Chiroptera) in New South Wales, Parasitology, 61:161-66; (9:2 GSH)
- 27 DORTCH, C.E. and D. MERRILEES, 1971, A salvage excavation in Devils Lair, Western Australia, J.Roy.Soc.W.Aust., 54:103-13; (14:50 JNJ)
(see also abstract 28)
- 28 DORTCH, C.E. and D. MERRILEES, 1973, Human occupation of Devils Lair, Western Australia, during the Pleistocene, Arch.&Phys.Anth.Oceania, 8:89-115; (12:2 JNJ) (see also abstract 27)
- 29 DOUGLAS, A.M., G.W. KENDRICK and D. MERRILEES, 1966, A fossil bone deposit near Perth, W.A., interpreted as a carnivore's den after feeding tests on living Sarcophilus (Marsupialia, Dasyuridae), J.R.Soc.W.Aust., 49:88-90; (5:34 XX)
- 30 DUGAN, K.G., 1980, Darwin and Diprotodon: the Wellington Caves fossils and the law of succession, Proc.Linn.Soc.N.S.W., 104:265-72; (19:35 JNJ)
- 31 DWYER, P.D., 1963, Bat banding, Aust.Nat.Hist., 14:198-200; (2:93-94 AMR)
- 32 DWYER, P.D., 1963, Seasonal changes in pelage of Miniopterus schreibersii blepotis (Chiroptera) in north-eastern New South Wales, Aust.J.Zool., 11:290-300; (2:119-20 AMR)
- 33 DWYER, P.D., 1963, The breeding biology of Miniopterus schreibersii blepotis Temminck (Chiroptera) in north-eastern New South Wales, Aust.J.Zool., 11:219-240; (3:14 AMR)
- 34 DWYER, P.D., 1963, Reproduction and distribution in Miniopterus (Chiroptera), Aust.J.Sci., 25:435-36; (3:12 AMR)
- 35 DWYER, P.D., 1964, Seasonal changes in activity and weight of Miniopterus schreibersii blepotis (Chiroptera) in north-eastern New South Wales, Aust.J.Zool., 12:52-69; (3:13-14 AMR)
- 36 DWYER, P.D., 1964, Fox predation on cave bats, Aust.J.Sci., 26:397-98; (3:41 AMR)
- 37 DWYER, P.D., 1965, Flight patterns of some eastern Australian bats, Vict.Nat., 82:36-41; (5:22 AMR)
- 38 DWYER, P.D., 1966, Mortality factors of the bent-winged bat, Vict.Nat., 83:31-36; (4:87 AMR)
- 39 DWYER, P.D., 1968, The biology, origin and adaptation of Miniopterus australis (Chiroptera) in New South Wales, Aust.J.Zool., 16:49-68; (6:78-79 XX)
- 40 DWYER, P.D., 1969, Population ranges of Miniopterus schreibersii (Chiroptera) in south-eastern Australia, Aust.J.Zool., 17:665-86; (8:68 PDD)
- 41 FORSTER, R.R., 1965, Harvestmen of the sub-order Laniatores from New Zealand Caves, Rec.Otago Mus.Zool., 2:1-18; (3:64 AMR)
- 42 GALLUS, A., 1966, Comments on "Transition from Mousterian to Perigordian" by L. PRADEL, Current Anthropology, 7:39-40; (5:2 AMR)
- 43 GEORGE, G. and N. WAKEFIELD, 1961, Victorian Cave Bats, Vict.Nat., 10:294-302; (2:119 AMR)
- 44 GILL, E.D., 1964, Age and origin of the Gisborne Cave, Proc.Roy.Soc.Vict, 77:532-33; (3:78 AMR)
- 45 GLOVER, J.E., 1968, Significance of stylolites in dolomitic limestones, Nature, 217:835-36; (7:14 XX)
- 46 GODWIN, H., 1962, Radiocarbon dating; Fifth International Conference, Nature, 195:943-45; (1:18 EAL)
- 47 GODWIN, H., 1962, Geophysics, half-life of radiocarbon, Nature, 195:984; (1:18 EAL)

- 48 GRAY, M.R., 1973, Cavernicolous spiders from the Nullarbor Plain and south-west Australia, J.Aust.ent.Soc., 12:207-21; (11:96 GSH)
- 49 GREEN, A.J.A., 1963, A new species of Echinodillo (Isopoda, Oniscoidea, Armadillidae) from Flinders Island, Tasmania, Proc.Roy.Soc.Tas., 97:77-80; (2:93 AMR)
- 50 GREEN, A.J.A., 1970, Styloniscidae (Isopoda, Oniscoidea) from Tasmania and New Zealand, Pap.Proc.Roy.Soc.Tas., 105:59-74; (9:28 AMR)
- 51 HALE, G.E. and A. SPRY, 1964, A cave in dolerite at Wayatinah, Tasmania, J.Geol.Soc.Aust., 11:213-16; (3:78 EAL)
- 52 HALL, L.S. and J.L. McKEAN, 1967, Transfer of new-born offspring in the bat Miniopterus schreibersii, Aust.J.Sci., 30:145; (7:68 AMR/EAL)
- 53 HALLAM, S.J., 1971, Roof markings in the "Orchestra Shell" Cave, Wanneroo, near Perth, Western Australia, Mankind, 8:90-103; (10:59 GSH)
- 54 HAMILTON-SMITH, E., 1965, Distribution of cave-dwelling bats in Victoria, Vict.Nat., 82:132-37; (4:89 AMR)
- 55 HAMILTON-SMITH, E., 1966, The geographical distribution of Australian cave-dwelling Chiroptera, Int.J.Speleol., 2:91-104; (6:79-80 AMR)
- 56 HAMILTON-SMITH, E., 1967, The Arthropoda of Australian Caves, J.Aust.ent.Soc., 6:103-18; (7:68 AMR)
- 57 HAMILTON-SMITH, E., 1968, Platypus in caves, Vict.Nat., 85:292; (8:68 AMR)
- 58 HAMILTON-SMITH, E., 1968, Albinism in the Bent-winged Bat Miniopterus schreibersii (Kuhl), Vict.Nat., 85:358-59; (9:28 AMR)
- 59 HAMILTON-SMITH, E. and D.J.H. ADAMS, 1966, The alleged obligate ectoparasitism of Myotyphlus jansoni (Mathews) (Coleoptera:Staphylinidae), J.ent.Soc.Qld., 5:44-45; (5:22 AMR)
- 60 HARRIS, J.A., 1970, Bat-guano cave environment, Science, 169:1342-43; (9:50 AMR)
- 61 HARRISSON, T., 1964, Borneo Caves with special reference to Niah Great Cave, Stud.in Speleol., 1:26-32; (3:40 XX)
- 62 HARRISSON, T., 1964, 100,000 years of stone age culture in Borneo, Roy.Soc.Arts, 112:174-87, plus Discussion 187-91; (4:72 EAL)
- 63 HARRISON, R.A., 1966, Australian glowworms of the Genus Arachnocampa Edwards (Diptera: Mycetophilidae), Pacific Insects, 8:877-83; (6:40 AMR)
- 64 HOOGSTRAAL, H. and G.M. KOHLS, 1962, Bat ticks of the genus Argas (Ixodoidea, Argasidae). 5. Description of larvae from Australian and New Guinea Carios-group, Proc.Linn.Soc.NSW, 87:275-80; (2:120 AMR)
- 65 HUNT, G.S., 1972, A new cavernicolous harvestman from Western Australia (Arachnida: Opiliones: Triaenonychidae), J.Aust.ent.Soc., 11:232-36; (10:74 AMR)
- 66 HUNT, G.S., 1972, Notes on Australian Harvestmen, Proc.8th.Bienn.Conf.Aust.Speleol.Fed., Tasmania, 76-80; (11:2 GSH)
- 67 JENNINGS, J.N., 1963, Some geomorphological problems of the Nullarbor Plain, Trans.Roy.Soc.S.Aust., 87:41-62; (2:92 EAL)
- 68 JENNINGS, J.N. and M.J. BIK, 1962, Karst morphology in Australian New Guinea, Nature, 194:1036-38; (1:18 EAL)
- 69 JENNINGS, J.N. and B.N. JAMES, 1967, Underground water movements in the Lobster Rivulet-Mole Creek Divide, Tasmania, Aust.J.Sci., 30:108-9; (6:75-76 EAL)
- 70 JENNINGS, J.N. and M.M. SWEETING, 1963, The Limestone Ranges of the Fitzroy Basin, Western Australia, a tropical semi-arid karst, Bonner Geographische Abhandlungen, 32:1-60; (3:11 EAL)
- 71 JENNINGS, J.N. and M.M. SWEETING, 1963, The Tunnel, a cave in the Napier Range, Fitzroy Basin, W.Australia., Trans.Cave Res.Gp.GB., 6:53-68; (6:2 DCL)
- 72 JOHNSON, K.L., G. McK.WRIGHT and D.H. ASTON, 1968, Ecological studies of Tunnel Cave, Mt. Eccles, Vict.Nat., 85:350-56; (8:70 AMR)
- 73 JOHNSON, R.F. and Rab. SUKAMTO, 1961, Cave deposits of phosphate rock in Central Java, Indonesia, Geol.Surv.Res., Article 367, D219/221; (1:20 EAL)

- 74 KAY, L., 1961, Orientation of bats and men by ultrasonic echo location, University of Birmingham Publication 61/21 and British Communication and Electronics, 1961; (1:13-14)
- 75 KOHLS, G.M. and H. HOOGSTRAAL, 1962, Bat ticks of the genus Argas (Ixodoidea, Argasidae). 4. Argas (Carios) australiensis n.sp. from Australia, Ann.Ent.Soc.Amer., 55:55-59; (2:120 AMR)
- 76 KLUGE, A.G., 1963, A review of the Gekkonid lizard genus Heteronota Gray with a description of a new species from Western Australia, J.Roy.Soc.W.Aust., 46:63-67; (2:93 AMR)
- 77 LÖFFLER, E. (ed), 1972, Land Resources of the Vanimo area, Papua New Guinea, CSIRO Div. of Land Res.Series 31, 126pp; (11:46 GSH)
- 78 LOWRY, D.C., 1964, Palygorskite in a cave in New Zealand, N.Z.J.Geol.Geophys., 7:917; (5:24 EAL)
- 79 LOWRY, D.C., 1967, The origin of Easter Cave doline, Aust.Geog., 10:300-302; (6:35 EAL)
- 80 LOWRY, D.C., 1969, The origin of small cavities in the limestone of the Bunda Plateau, Eucla Basin, Geol.Surv.W.Aust.Ann.Rep. for 1968, 34-37; (8:28 DCL) (see also paper 70 (8:43-47) for discussion by J.N. JENNINGS)
- 81 LOWRY, J.W.J., 1972, The taxonomic status of small fossil Thylacines (Marsupialia, Thylacinidae) from Western Australia, J.Roy.Soc.W.Aust., 55:19-26; (10:74 AMR)
- 82 LUNDELIUS, E.L.Jr., 1963, Vertebrate remains from the Nullarbor caves, Western Australia, J.Roy.Soc.W.Aust., 46:75-80; (3:41-42 AMR)
- 83 LUNDELIUS, E.L.Jr., 1964, Notes on the skulls of two Western Australian rodents with a key to the skulls of the rodents of southwestern Australia, J.Roy.Soc.W.Aust., 47:65-71; (4:50 AMR)
- 84 LUNDELIUS, E.L.Jr., 1966, Marsupial Carnivore Dens in Australian Caves, Stud.in Speleol., 1:174-80; (6:32 AMR)
- 85 MAA, T.C., 1962, Records and descriptions of Nycteribiidae and Streblidae (Diptera), Pacific Insects, 4:417-436; (2:120 AMR)
- 86 McALPINE, D.K., 1966, Description and biology of an Australian species of Cypselosomatidae (Diptera), with a discussion of family relationships, Aust.J.Zool., 14:673-85; (5:21 AMR)
- 87 MCCARTHY, F.D., 1962, Report on Australia and Melanesia, Asian Perspectives, 5:141-55; (1:60 EAL)
- 88 McCLURE, H.E., BOO-LIAT LIM and S.E. WINN, 1967, Fauna of the Dark Cave, Batu Caves, Kuala Lumpur, Malaysia, Pacific Insects, 9:400-28; (6:80 AMR)
- 89 McDOUGALL, I., H.L. ALLSOPP and F.H. CHAMALAUN, 1966, Isotopic dating of the Newer Volcanics of Victoria, Australia, and geomagnetic polarity epochs, J.Geophys.Res., 71:6107-118; (5:46 CDO)
- 90 McKEAN, J.L. and L.S. HALL, 1964, Notes on microchiropteran bats, Vict.Nat., 81:36-37; (3:40-41 AMR)
- 91 McKEAN, J.L. and L.S. HALL, 1965, Distribution of the large-footed myotis, Myotis adversus, in Australia, Vict.Nat., 82:164-68; (4:90 AMR)
- 92 McKEAN, J.L. and E. HAMILTON-SMITH, 1967, Litter size and maternity sites in Australian bats (Chiroptera), Vict.Nat., 84:203-206; (6:42 AMR)
- 93 McKEAN, J.L. and W.J.PRICE, 1967, Notes on some Chiroptera from Queensland, Australia, Mammalia, 31:101-19; (6:22 AMR)
- 94 MACKERRAS, M.J., 1965, Australian Blattidae (Blattodea) I. General remarks and revision of the Genus Polyzosteria Burmeister, Aust.J.Zool., 13:841-82; (4:52 AMR)
- 95 MACKERRAS, M.J., 1965, Australian Blattidae (Blattodea) II. Revision of the Genus Zonioploca Stal and Eppertia Shaw, Aust.J.Zool., 13:903-27; (4:52 AMR)
- 96 MAIN, B.Y., 1969, A blind mygalomorph spider from a Nullarbor Plain Cave, J.Roy.Soc.W.Aust., 52:9-11; (7:86 AMR)
- 97 MAHONEY, J.A., 1964, The taxonomic status of Dasyurus affinis McCoy (1865) (Dasyuridae) and Hypsiprymnus trisulcatus McCoy (1865) (Macropodidae), two marsupials from a Holocene cave deposit near Gisborne, Victoria, Proc.Roy.Soc.Vict., 77:525-32; (4:2 AMR)

- 98 MAKSIMOVICH, G.A., 1962, Karst in Australia, Gidrogeologiya i Karstovedeniye, 1:153-71, Perm, USSR, (in Russian); (3:10 JNJ)
- 99 MARTIN, H.A., 1973, Palynology and historical ecology of some cave excavations in the Australian Nullarbor, Aust.J.Bot., 21:283-316; (14(2):63 JNJ)
- 100 MAY, B.M., 1963, New Zealand Cave Fauna. 1. The larva of Duvaliomimus mayae Britton 1958 (Coleoptera, Carabidae: Trechinae), Trans.Roy.Soc.N.Z.Zool., 3:147-50; (2:94 AMR)
- 101 MAY, B. M., 1963, New Zealand Cave Fauna. 2. The limestone caves between Port Waikato and Piopio Districts, Trans.Roy.Soc.N.Z.Zool., 3:181-204; (3:12 AMR)
- 102 MEDWAY, Lord, 1964, Post-Pleistocene changes in the mammalian fauna of Borneo, Archaeological evidence from the Niah Caves, Stud.in Speleol., 1:33-37; (3:39-40 XX)
- 103 MERRILEES, D., 1965, Two species of the extinct genus Sthenurus Owen (Marsupialia, Macropodidae) from south-eastern Australia, including Sthenurus gilli sp.nov., J.Roy.Soc.W.Aust., 48:22-32; (4:22 AMR)
- 104 MERRILEES, D., 1966, Time and the Marsupial, Wildl.in Aust., 3:20-23; (5:22 AMR)
- 105 MERRILEES, D., 1967, South-western Australian occurrences of Sthenurus (Marsupialia, Macropodidae), including Sthenurus browni sp.nov., J.Roy.Soc.W.Aust., 50:65-79; (6:42 AMR)
- 106 MERRILEES, D., 1967, Fossil bandicoots (Marsupialia, Peramelidae) from Mammoth Cave, Western Australia, and their climatic implications, J.Roy.Soc.W.Aust., 50:121-28; (7:40 XX)
- 107 MERRILEES, D., 1969, A newly discovered bone-bearing deposit in Labyrinth Cave, near Augusta, Western Australia, West.Aust.Nat., 11:86-87; (8:70 AMR)
- 108 MOORE, B.P., 1962, Notes on Australian Carabidae (Col.)-III. A remarkable cave-frequenting Harpaline from Western Victoria, Ent.Mon.Mag., 97:188-90; (1:14 XX)
- 109 MOORE, B.P., 1964, New cavernicolous Carabidae (Coleoptera) from mainland Australia, J.ent.Soc.Qld., 3:69-74; (2:92 AMR)
- 110 MOORE, B.P., 1967, New Australian Cave Carabidae (Coleoptera), Proc.Linn.Soc.NSW, 91:179-84; (5:86 AMR)
- 111 MOORE, B.P., 1968, Philonthus parvus Sharp (Coleoptera: Staphylinidae), a Japanese Rove Beetle established in Australian caves, J.Aust.ent.Soc., 7:163-64; (7:40 AMR)
- 112 MOUNTFORD, C.P. and E.J. BRANDT, 1968, Aboriginal cave paintings and rock markings at Ingaladdi Rock Shelter, Willeroo, Northern Territory of Australia, Rec.S.Aust.Mus., 15:679-92; (8:48 AMR)
- 113 MUIR, B.G., 1968, The use of ethyl mercaptan in caves, Western Caver, 8:60-61; (6:78 AMR)
- 114 OLLIER, C.D., 1963, The Skipton Lava Caves, Vict.Nat., 80:181-83; (2:94 EAL)
- 115 OLLIER, C.D., 1964, Caves and related features of Mount Eccles, Vict.Nat., 81:64-71; (3:39 EAL)
- 116 OLLIER, C.D., 1964, McEachern Cave, Nelson, Vict.Nat., 81:195-97; (3:39 EAL)
- 117 OLLIER, C.D. and M.C. BROWN, 1964, The Byaduk Lava Caves, Vict.Nat., 80:279-90; (3:10 EAL)
- 118 OLLIER, C.D. and M.C. BROWN, 1965, Lava Caves of Victoria, Bull.Volcanologique, 28:1-15; (5:29 EAL)
- 119 OLLIER, C.D. and E.B. JOYCE, 1964, Volcanic physiography of the Western Plains of Victoria, Proc.Roy.Soc.Vic., 77:357-76; (3:38-39 EAL)
- 120 PARTRIDGE, J., 1967, A 3,300 year old Thylacine (Marsupialia: Thylacinidae) from the Nullarbor Plain, Western Australia, J.Roy.Soc.W.Aust., 50:57-59; (6:22 AMR)
- 121 PEDDER, A.E.H., 1966, The Devonian Tetracoral Haplothecia and new Australian Phacellophyllids, Proc.Linn.Soc.NSW, 90:181-89; (4:89 AMR)
- 122 PLAYFORD, P.E. and D.C. LOWRY, 1966, Devonian reef complexes of the Canning Basin, Western Australia, Geol.Surv.of W.Aust.Bull.118, 150pp; (6:59-60 EAL)

- 123 PRINCIS, K., 1963, Two new Western Australian Cockroaches, Roy.Soc.W.Aust., 46:11-12 (5:61 AMR)
- 124 PURCHASE, D., 1962, A second report on bat-banding in Australia, CSIRO Wildl.Res.Tech.Pap.2:1-16; (1:68 AMR)
- 125 PURCHASE, D., 1969, Sixth, seventh, eighth annual reports on bat-banding in Australia, July 1964 to June 1967, CSIRO Wildl.Res.Tech.Pap.17:16pp; (8:48 EAL)
- 126 RICHARDS, A.M., 1962, Feeding behaviour and enemies of Rhaphidophoridae (Orthoptera) from Waitomo Caves, New Zealand, Trans.Roy.Soc.N.Z.Zool., 2:121-29; (3:13 AMR)
- 127 RICHARDS, A.M., 1962, Revision of the Rhaphidophoridae (Orthoptera) of New Zealand Part XI - A new species belonging to the genus Gymnoplectron Hutton, 1897, from the Poor Knights Islands, Trans.Roy.Soc.N.Z.Zool., 2:203-7; (3:38 AMR)
- 128 RICHARDS, A.M., 1964, The Rhaphidophoridae (Orthoptera) of Australia.I. Tasmania, Pacific Insects, 6:217-23; (3:14 AMR)
- 129 RICHARDS, A.M., 1964, The New Zealand Glow-worm, Stud.in Speleol., 1:38-41; (3:40 EBB)
- 130 RICHARDS, A.M., 1965, The Rhaphidophoridae (Orthoptera) of Australia Part 2. A new genus, Proc.Linn.Soc.NSW, 89:373-79; (3:59 AMR)
- 131 RICHARDS, A.M., 1965, Revision of the Rhaphidophoridae (Orthoptera) of New Zealand, Part XII, A new species of Pallidoplectron Richards, Trans.Roy.Soc.N.Z.Zool., 7:135-39; (4:67-68 AMR)
- 132 RICHARDS, A.M., 1966, The Rhaphidophoridae (Orthoptera) of Australia. 4. A new genus from South Australia, Proc.Linn.Soc.NSW, 91:109-13; (5:89 XX)
- 133 RICHARDS, A.M., 1967?, The Rhaphidophoridae (Orthoptera) of Australia Part 3. A new genus from south-eastern Australia, Pacific Insects, 8:617-28; (6:9 AMR)
- 134 RICHARDS, A.M., 1967, The Rhaphidophoridae (Orthoptera) of Australia Part 5. The Rhaphidophoridae of Flinders Island, Proc.Linn.Soc.NSW, 92:151-56; (6:30 AMR)
- 135 RICHARDS, A.M., 1968, Notes on the biology of two species of Rhaphidophoridae (Orthoptera) in Tasmania, Proc.Linn.Soc.NSW, 92:273-78; (6:80 AMR)
- 136 RICHARDS, A.M., 1968, The Rhaphidophoridae (Orthoptera) of Australia. Part 6. Two new species from northern Tasmania, Pacific Insects, 10:167-76; (7:14 AMR)
- 137 RICHARDS, A.M., 1968, The cavernicolous status of some species of Macropathinae (Orthoptera: Rhaphidophoridae), J.Aust.ent.Soc., 7:87-89; (7:40 AMR)
- 138 RICHARDS, A.M., 1970, Observations in the biology of Pallidotettix nullarborennis Richards (Rhaphidophoridae: Orthoptera) from the Nullarbor Plain, Proc.Linn.Soc.NSW, 94:195-206; (8:50 AMR)
- 139 RICHARDS, A.M., 1970, The Rhaphidophoridae (Orthoptera) of Australia Part 8. Two new species of Parvotettix Richards, Pacific Insects, 12:1-8; (8:78 AMR)
- 140 RICHARDS, A.M., 1971, An ecological study of the cavernicolous fauna of the Nullarbor Plain, southern Australia, J.Zool.Lond., 164:1-60; (9:89 AMR)
- 141 SCHUBART, O., 1962, Notes on two European millipedes (Diplodia) in New Zealand, Trans.Roy.Soc.N.Z.Zool., 2:191-97; (1:60 AMR)
- 142 SHACKLETTE, M.H., F.H. DIERCKS and N.B.GALE, 1962, Histoplasma capsulatum recovered from bat tissues, Science, 30:1135; (1:12 EAL)
- 143 SIMPSON, G.G., 1961, Historical Zoogeography of Australian Mammals, Evolution, 15:431-46; (1:19 AMR)
- 144 SIMPSON, K.G. and G.T. SMITH, 1964, Bat mandible from Mt. Widderin Cave, Skipton, Victoria, Vict.Nat., 81:78-79; (3:59 AMR)
- 145 SMITH, J.G., 1963, A short note on the karst areas of Papua, NSS News, 21:59; (3:12 EAL)
- 146 SMITH, M.J., 1971, Small fossil vertebrates from Victoria Cave, Naracoorte, South Australia. I. Potorinae (Macropodidae), Petauridae and Burramyidae (Marsupialia), Trans.Roy.Soc.S.Aust., 95:185-98; (9:90 AMR)
- 147 SMITHERS, C.N., 1964, New records of cave and mine-dwelling Psocoptera in Australia, J.ent.Soc.Qld., 3:85; (2:92 AMR)

"ABSTRACTS INDEX" Helictite 23(supplement):S16 1985

- 148 STRASKRABA, M., 1966, *Hurleya kalamundae* n.g. n.sp. (Amphipoda, Gammaridae) from subterranean waters of W.A., Int.J.Speleol., 2:291-95; (5:29 AMR)
- 149 TEICHERT, C., 1967, Age of coastal limestone, Western Australia, Aust.J.Sci., 30:71 (6:42 EAL)
- 150 TIDEMANN, C.R., 1968, Some mammal remains from cave deposits in the south-east of South Australia, S.Aust.Nat., 42:21-27; (7:66 AMR)
- 151 TREZISE, J., 1970, Bone deposits in Chillagoe-Mungana Caves, Nth.Qld.Nat., 37:2-4; (9:28 GSH)
- 152 VANDEL, A., 1973, Les Isopodes Terrestres de l'Australie Etude Systématique et Biogéographique, Mem.Mus.natn.Hist.nat., Ser A, 82:1-171; (11:46 GSH)
- 153 Van DEUSEN, H.M., 1963, First New Guinea record of *Thylacinus*, J.Mammal., 44:279-280; (4:22 AMR)
- 154 Van DEUSEN, H.M., 1967, In the land of Bikpela Rat Moa, Part II: From Mountain peaks to seaside caves, Nature and Science, 4:2-6; (6:2 EAL)
- 155 WAKEFIELD, N.A., 1963, Sub-fossils from Mount Hamilton, Victoria, Vict.Nat., 79:323-30; (1:82 AMR)
- 156 WAKEFIELD, N.A., 1963, Mammal sub-fossils from near Portland, Victoria, Vict.Nat., 80:39-45; (3:13 AMR)
- 157 WAKEFIELD, N.A., 1964, Mammal sub-fossils from basalt caves in south-western Victoria, Vict.Nat., 80:274-78; (3:38 AMR)
- 158 WAKEFIELD, N.A., 1964, Recent mammalian sub-fossils of the basalt plains of Victoria, Proc.Roy.Soc.Vict., 77:419-25; (3:64 AMR)
- 159 WAKEFIELD, N.A., 1971, The brush-tailed rock-wallaby (*Petrogale penicillata*) in Western Victoria, Vict.Nat., 88:92-102; (9:70 AMR)
- 160 WALKER, E., 1972, Queensland's Granite Belt in colour, Walklee Press, Stanthorpe, pp57. (11:46 EAL)
- 161 WALL, J.R.D. and G.E. WILFORD, 1966, Two small-scale solution features of limestone outcrops in Sarawak, Malaysia, Z.Geomorph., 10:90-94; (6:74 EAL)
- 162 WHITE, J.P., 1965, Archaeological excavations in New Guinea: an interim report, J.Polynesian Soc., 74:40-56; (5:24 EAL)
- 163 WILFORD, G.E., 1966, "Bell Holes" in Sarawak Caves, Bull.Nat.Speleol.Soc., 28:179-81; (5:46 EAL)
- 164 WILLIAMS, W.D., 1964, Subterranean freshwater prawns (Crustacea: Decapoda: Atyidae) in Australia, Aust.J.Mar.Freshw.Res., 15:93-106; (3:42 AMR)
- 165 WOMERSLEY, H., 1963, Two species of Acarina from bat guano from Australian Caves, Trans.Roy.Soc.S.Aust., 86:147-54; (2:94 AMR)
- 166 YOSII RIOZO, 1971, Cave collembola of New Guinea collected by the Explorer's Club of the Nanzan University, Contr.Biol.Lab.Kyoto Univ., 23:77-79; (9:60 AMR)

HELICTITE CUMULATIVE INDEX FOR VOLUMES 1-22 (1964-1984)

Reviews - Alphabetical Listing of Authors

- 1 ANDRIEUX, C., 1965, Etude des Stalactites Tubiformes Monocrystallines, Bull.Soc.Franc.Miner.Crist., 88:53-58; (4:68-69 GSH)
- 2 ANON, 1969, Prophetic vision in the Solomon Islands, New Scientist, 41:215; (8:62 EAL)
- 3 BALÁZS, D., 1968, Karst regions in Indonesia, Karszt-és Barlangkutató, 5:3-61; (6:56-59 EAL)
- 4 BLACKBURN, G., R.D. BOND and A.R.P. CLARKE, 1965, Soil development associated with stranded beach ridges in south-east South Australia, CSIRO Soil Pub. No.22, 76pp; (7:39 EAL)
- 5 BLAKE, D.H. and Y. MIEZITIS, 1967, Geology of Bougainville and Buka Islands, New Guinea, Bur.Min.Res., Geol. & Geophys., Bull.93, 56pp; (6:33-34 EAL)
- 6 BÖGLI, A., 1978, Karsthydrographie und Physische Spalaologie, Springer, Berlin, 292pp; (17:49-50 JNJ)
- 7 CAMERON, N., 1967, Niah Caves of Borneo, Geogr. Mag., 40:649-655; (8:78 EAL)
- 8 CAVAILLÉ, A., 1962, Karst systems and cave evolution, (in French), Spelunca (4th Ser.) Mem., 2:9-28; (3:62 JNJ)
- 9 CHAMPION, I.F., 1966, Across New Guinea from the Fly to the Sepik, Lansdowne Press, Melbourne, 225pp; (6:79 EAL)
- 10 CLAUS, G. (ed.), 1965, International Journal of Speleology, 1:1-571; (4:70 AMR/EAL)
- 11 DOW, D.B., J.A.J. SMIT, J.H.C. BAIN and R.J. RYBURN, 1972, Geology of the South Sepik Region, New Guinea, Bur.Min.Res., Geol. & Geophys., Bull.133, 88pp; (11:96 EAL)
- 12 DUNKLEY, J.R., 1971, The Exploration and Speleogeography of Mammoth Cave, Jenolan, Speleol.Res.Council Ltd., Sydney, 53pp; (10:48 GSH)
- 13 DUNKLEY, J. and E.G. ANDERSON, 1978, The Exploration and Speleogeography of Mammoth Cave, Jenolan, (2nd. ed.) pub. for SUSS by Speleol.Res.Council Ltd., Sydney, 62pp with chapter by P.J. WINGLEE; (16:52 GCC)
- 14 DUNKLEY, J.R. and T.M.L. WIGLEY (eds.), 1967, Caves of the Nullarbor, Speleol.Res.Council Ltd., 67pp; (7:22 AMR/EAL)
- 15 DURY, G.H., 1968, An introduction to the geomorphology of Australia, 1-36 in Studies in Australian Geography, Heinemann Educational Aust.; (7:40 EAL)
- 16 EDWARDS, R., 1966, The need for preservation of Aboriginal cave art, Roy.Geog.Soc.A'asia, SA Branch, 67:9-19; (6:74-75 EAL)
- 17 ELLIS, R., 1980, Australian Caves and Caving, Western Colour Print, Marrickville, NSW, 46pp; (19:4 GCC)
- 18 ELLIS, R. et al.(eds.), 1972, Bungonia Caves, Sydney Speleol.Soc., Sydney, 230pp; (10:91-92 GSH)
- 19 FORD, D.C. (ed.), 1983, Castleguard Cave and Karst, Columbia Icefields Area, Alberta, Rocky Mountains of Canada: A Symposium, Arc.& Alp.Res., 15:425-554; (22:3-5 JNJ)
- 20 FORD, T.D. and C.H. CULLINGFORD, (eds.), 1976, The Science of Speleology, Academic Press, London, 593pp; (16:2 GCC)
- 21 HABERLAND, E., 1968, The caves of Karawari, D'Arcy Galleries, New York, 19pp; (8:62 JNJ)
- 22 HAMILTON-SMITH, E., 1962, Australian Cave Fauna- Notes on collecting, pub. by author; (1(2):15 CNS)

- 23 HAMILTON-SMITH, E., 1966, Pselaphidae (Coleoptera) from Australian Caves, J.ent.Soc.Qld., 5:70-71; (4:69 AMR)
- 24 HAMILTON-SMITH, E., 1966, Free living mites (Acarina) in Australian Caves, Bull.Nat.Speleol.Soc., 28:100-103; (5:70 AMR)
- 25 HILL, A.L. (ed.), 1966, Mullamullang Cave Expeditions, CEG(SA) Occ.Pap.No.4, 48pp; (5:87-89 JNJ)
- 26 HOPLEY, D., 1982, The geomorphology of the Great Barrier Reef: Quaternary development of coral reefs, Wiley, New York, 467pp; (20:35-36 JNJ)
- 27 HOSKING, J.S., 1967, Limestone and lime in the Territory of Papua and New Guinea, CSIRO Div.Building Res.Tech.Pap.21, 36pp; (6:34-35 EAL)
- 28 JAMES, J.M. (ed.), 1974, Papua New Guinea Speleological Expedition 1973, Speleol.Res.Council Ltd., Sydney, 69pp; (14(2):2-4 PWW)
- 29 JAMES, J.M. and H.J. DYSON (eds.), 1980, Caves and karst of the Muller Range, ATEA 78, in conjunction with the Speleol.Res.Council Ltd., Sydney, 150pp; (19:3-4 JRD)
- 30 JAMES, J.M. and H.J. DYSON (eds.), 1980, Caves and karst of the Muller Range, ATEA 78, in conjunction with the Speleol.Res.Council Ltd., Sydney, 150pp; (19:38-39 PWW)
- 31 JENNINGS, I.B., A.J. NOLDART and E. WILLIAMS, 1967, Geology and mineral resources of Tasmania, Tas.Geol.Surv.Bull.50, 90pp; (7:13 EAL)
- 32 JENNINGS, J.N., 1968, Syngenetic karst in Australia, Contributions to the Study of Karst, ANU, Dept. Geogr. Pub. G/5:41-110; (7:16-20 DCL)
- 33 KEYSER, F.de and K.G. LUCAS, 1968, Geology of the Hodgkinson and Laura Basins, North Queensland, Bur.Min.Res., Geol. & Geophys., Bull.84, 254pp; (9:84 EAL)
- 34 LOWRY, D.C., 1970, Geology of the Western Australian part of the Eucla Basin, Geol.Surv.W. Aust.Bull.No.122, 201pp; (11:76 EAL)
- 35 MAHONEY, J.A. and W.D.L. RIDE, 1975, Index to the Genera and species of fossil Mammalia described from Australia and New Guinea between 1838 and 1968, W. Aust.Mus.Spec.Pub.6, 250 pp; (15:2 JNJ)
- 36 McKEAN, J.L., 1966, Some distributional records of Broad-nosed Bats (Nycticeius spp.), Vict.Nat., 83:25-30; (4:69 AMR)
- 37 MAIRE, R., 1980, Elements de Karstologie Physique, Spelunca Spécial, 3:1-56; (18:30 HJD)
- 38 MERRILEES, D., 1965, Quokka at Yanchep in Historic Time, W.Aust.Nat., 10:18; (4:68 AMR)
- 39 MOORE, G.W. and G. NICHOLAS, 1964, Speleology: The Study of Caves, D.C.Heath & Co., Boston, 120pp; (3:2 XX)
- 40 MOUNTFORD, C.P. and E. BRANDL, 1967, Aboriginal cave paintings, Mountain Creek Waterhole, St. Vidgeon, Northern Territory of Australia, Rec.S.Aust.Mus., 15:371-382; (6:75 EAL)
- 41 POLACH, H.A. and J. GOLSON, 1966, Collection of specimens for radiocarbon dating and interpretation of results, Aust.Inst.Ab.Stud., Manual 2, 42pp; (6:30-31 EAL)
- 42 RANDAL, M.A., 1967, Groundwater in the Barkly Tableland, NT, Bur.Min.Res., Geol. & Geophys., Bull.91, 110pp; (6:30 EAL)
- 43 RICHARDS, A.M., 1965, Cavernicolous Grylloidea (Orthoptera) from Australia, J.ent.Soc.Qld., 4:67-68; (3:44 AMR)
- 44 ROBINSON, D. and A. GREENBANK, 1964, Caving and Potholing, Constable, London, 171pp; (4:67 GAR)
- 45 SIFFRE, M., 1963, Hors du Temps, René Julliard, Paris, 310pp (in French); published as Beyond Time, 1964, McGraw-Hill, New York, 228pp; (4:66-67 EAL)
- 46 SPRENT, J.K. (ed.), 1970, Mount Etna Caves, Uni.Qld.Speleol.Soc., 116pp; (9:72 EAL)
- 47 TRIMMEL, H., 1968, Höhlenkunde, Vieweg, Braunschweig, 300pp; (6:72-74 JNJ)
- 48 VAN DEUSEN, H.M., 1966, The Seventh Archbold Expedition, Bioscience, 16:456-463; (6:31 EAL)

- 49 VANDEL, A., 1964, Biospéologie. La Biologie des Animaux Cavernicoles, Gauthier-Villars Editeur, Paris, 619pp, (in French); (2:104 XX)
- 50 VANDEL, A., 1965, Biospeleology- the biology of cavernicolous animals, Pergamon Press, Oxford, 524pp; (4:24 XX)
- 51 VERSTAPPEN, H.Th., 1964, Karst morphology of the Star Mountains (Central New Guinea) and its relation to lithology and climate, Z.Geomorph.N.F.Bd., 8:40-49; (3:60-61 ID)
- 52 VERSTAPPEN, H.Th., 1964, Geomorphology of the Star Mountains, Nova Guinea, Geology, 5:101-158; (3:60-61 ID)
- 53 WALPOLE, B.P., et al, 1968, Geology of the Katherine-Darwin region, Northern Territory; and CROHN, P.W., 1968, The mines and mineral deposits of the Katherine-Darwin region, Bur.Min.Res., Geol. & Geophys.Bull.82, 2vols; (8:28 EAL)
- 54 WALTHAM, A.C., 1964, Caves, Macmillan, London, 240pp; (14:4 RE)
- 55 WALTHAM, A.C., 1976, World of Caves, Orbis Publishing Ltd., London. 128pp: (15:2 RE)
- 56 WHITE, W.C. and O.N. WARIN, 1964, A survey of phosphate deposits in the south-west Pacific and Australian Waters, Bur.Min.Res., Geol. & Geophys. Bull.69, 173pp; (6:32-33 JNJ)
- 57 WILFORD, G.E., 1964, The geology of Sarawak and Sabah Caves, Geol.Surv.,Borneo Region, Malaysia,Bull.6, 181pp; (6:76-77 EAL)
- 58 WILLIAMS, P.W., 1968, An evaluation of the rate and distribution of limestone solution and deposition in the River Fergus Basin, Western Ireland, Contributions to the Study of Karst, ANU, Dept, Geogr.Pub.G/5:1-40; (7:2 DCL)
- 59 WILLIAMS, W.D., 1965, Subterranean occurrence of Anaspides tasmaniae (Thomson) (Crustacea, Syncarida), Int.J.Speleo.,1:333-337; (4:68 AMR)
- 60 WRIGHT, A.J., 1968, Ordovician Conodonts from New Zealand, Nature, 218(5142): 664-665; (6:76 EAL)
- 61 ZÖTL, J.G., 1974, Karsthydrogeologie, Springer, New York and Vienna, 291pp; (17:3-4 JNJ)

Canada	rev. 19	
Canada	abs. 122	
Canada	abs. 148	
Canada	abs. 149	
Canada	abs. 150	
Canada	abs. 151	
Canada	abs. 152	
Canada	abs. 153	
Canada	abs. 154	
Canada	abs. 155	
Canada	abs. 156	
Canada	abs. 157	
Canada	abs. 158	
Canada	abs. 159	
Canada	abs. 160	
Canada	abs. 161	
Canada	abs. 162	
Canada	abs. 163	
Canada	abs. 164	
Canada	abs. 165	
Canada	abs. 166	
Canada	abs. 167	
Canada	abs. 168	
Canada	abs. 169	
Canada	abs. 170	
Canada	abs. 171	
Canada	abs. 172	
Canada	abs. 173	
Canada	abs. 174	
Canada	abs. 175	
Canada	abs. 176	
Canada	abs. 177	
Canada	abs. 178	
Canada	abs. 179	
Canada	abs. 180	
Canada	abs. 181	
Canada	abs. 182	
Canada	abs. 183	
Canada	abs. 184	
Canada	abs. 185	
Canada	abs. 186	
Canada	abs. 187	
Canada	abs. 188	
Canada	abs. 189	
Canada	abs. 190	
Canada	abs. 191	
Canada	abs. 192	
Canada	abs. 193	
Canada	abs. 194	
Canada	abs. 195	
Canada	abs. 196	
Canada	abs. 197	
Canada	abs. 198	
Canada	abs. 199	
Canada	abs. 200	

HELICITITE CUMULATIVE INDEX FOR VOLUMES 1-22 (1964 TO 1984)

Geographic Index (for individual caves see under "Caves")

Abercrombie, NSW	pap. 32		
Atea Kanada, PNG	pap. 54,56		
	rev. 29,30		
Augusta, WA	abs. 107		
Australia	pap. 12,17,20,		
	42,103,105,		
	134,135		
	abs. 10,11,31,		
	40,55,56,		
	57,64,66,		
	85,87,91,		
	92,94,95,		
	98,103,104,		
	109,110,111,		
	124,125,128,		
	137,143,147,		
	152,165		
	rev. 13,15,16,17,		
	22,23,24,		
	32,35,36,56		
Austria	pap. 73		
Balearic Islands	pap. 103		
Barkly Tableland	rev. 42		
Big Hole, NSW	pap. 66		
Blue Waterholes, NSW	pap. 72,78,79		
Borenore, NSW	pap. 29,30		
Borneo	abs. 61,62,102		
	rev. 7		
Bougainville, PNG	pap. 127		
	rev. 5		
Buchan, Vic	pap. 21		
	abs. 57		
Bungonia, NSW	pap. 2,44,55,		
	57,63		
	rev. 18		
Bunya Mountains, Qld	pap. 41		
Canada	rev. 19		
Canning Basin	abs. 122		
CAVES			
Abercrombie	pap. 32		
Atea Kanada, PNG	pap. 54,56		
Barber, NSW	pap. 67		
Batu, Malaysia	abs. 88		
Big Hole, NSW	pap. 66		
Borenore, NSW	pap. 29,30		
Byaduk Lava, Vic	abs. 117		
Castleguard, Canada	rev. 19		
Cave Spring, WA	pap. 95		
Cliefden, NSW	pap. 122		
Cocklebidy, WA	pap. 93,97		
Coolman, NSW	pap. 71		
Coppermine, NSW	pap. 104		
Cutta Cutta, NT	pap. 142		
Damawewe, PNG	pap. 126		
Devil's Lair, WA	abs. 27,28		
Dip, NSW	pap. 60,62		
Douglas, NSW	pap. 27		
Easter, WA	abs. 79		
Frustration, NSW	pap. 13		
Gaden-Coral, NSW	pap. 28,124		
Gecko, WA	pap. 94		
Gisborne, Vic	abs. 44,97		
Gulemwawaya, PNG	pap. 112		
Holy Jump Lava, Qld	pap. 144		
Kairimu, PNG	abs. 9		
Kelly Hill, SA	pap. 49		
Kintore, NT	pap. 142		
Koala, WA	pap. 3		
Koonalda, SA	pap. 33		
		CAVES	
		Labryrinth WA	abs. 107
		Loniu, PNG	pap. 25
		McEachern's, Vic	pap. 141
			abs. 116
		Mammoth, NSW	rev. 12,13
		Mammoth, WA	abs. 106
			rev. 14
		Moorba, WA	pap. 6
		Mount Wedderin, Vic	abs. 144
		Mullamullang, WA	pap. 50
			rev. 25
		Murra-el-elevyn, WA	abs. 15
		Murray, NSW	pap. 65,74,81
		New Year, NSW	pap. 130
		Nettle, NSW	pap. 10
		Nombe Rockshelter, PNG	pap. 35
		Niah, Borneo	abs. 61
			rev. 7
		Odyssey, NSW	pap. 57
		Old Napier Downs, WA	pap. 83
		Orchestra Shell, WA	abs. 53
		Puketiti Flower, NZ	pap. 129
		Punchbowl, NSW	pap. 61
		Ridge Mine Pot, NSW	pap. 59
		Right Cooleman, NSW	pap. 71
		River Cave, NSW	pap. 69
		Signature, NSW	pap. 61
		Skipton Lava, Vic	abs. 114
		Spider, NSW	pap. 11
		Strong's, WA	abs. 22
		TaylorCk Silcrete, Vic	pap. 146
		The Tunnel, WA	abs. 71
		Thylacine Hole, WA	pap. 52,98,102
		Tunnel, Vic	abs. 72
		Waitomo, NZ	pap. 133
			abs. 126
		Walli, NSW	pap. 31
		Wellington, NSW	abs. 30
		Wyanbene, NSW	pap. 145
		Central Victoria	pap. 146
		Chillagoe, Qld	pap. 47,64,100
			abs. 151
			rev. 33
		Cliefden, NSW	pap. 122
		Coolah, NSW	pap. 123
		Cooleman, NSW	pap. 44,65,67,
			69,71,72,
			74,78,79,
			81,82,130
		Deepdene, WA	pap. 76
		Flinders Island, Tas	abs. 49,134,139
		France	abs. 2,3
			rev. 45
		Girraween Nat.Park, Qld	pap. 23
		Great Barrier Reef, Qld	rev. 26
		Hastings, Tas	abs. 25
		Indonesia	abs. 7,8,73
			rev. 3
		Ireland	rev. 58
		Isaacs Creek, NSW	pap. 8,9,26
		Jenolan, NSW	pap. 10,11,16,
			45,48,89,
			137
			abs. 21,58
			rev. 12,14

June-Florentine, Tas	pap. 37	Pacific	rev. 56
Jurien Bay, WA	pap. 6	Panama	abs. 142
	abs. 6	Panmure, Vic	abs. 58
Kangaroo Island, SA	pap. 49	Papua New Guinea	pap. 25,35,53,
Katherine, NT	pap. 142		54,56,112,
Kempsey, NSW	abs. 36,60		113,114,115,
Kimberleys, WA	pap. 75,83,95		116,117,118,
	abs. 70,71,122		119,120,121,
King Island, Tas	pap. 39		125,126,127
			abs. 5,20,55,
Malaysia	abs. 14,88,161,		64,68,77,
	rev. 57		85,145,153,
Manus Island, PNG	pap. 25		154,162,166
Mole Creek, Tas	abs. 25,69		rev. 2,5,9,11,
	rev. 59		21,27,28,
Mount Eccles, Vic	abs. 72, 115		29,30,35,
Mount Etna, Qld	pap. 14,19		48,51,52
	rev. 46	Perth, WA	abs. 29
Mount Hamilton, Vic	abs. 155	Peru	abs. 16
		Poor Knights Is, NZ	abs. 127
Narracoorte, SA	abs. 146	Portland, Vic	abs. 156
New Caledonia	pap. 106		
	abs. 10	Queensland	pap. 14,19,23,
New South Wales	pap. 2,8,9,		41,47,100,
	10,11,16,		144
	18,32,43,		abs. 34,39,93,
	44,45,48,		151,160
	51,55,57,		rev. 26,33,46
	58,59,60,	Ridge Mine Pot, NSW	pap. 59
	61,62,63,		
	65,66,67,	Sabah	abs. 6
	69,71,72,		rev. 57
	74,77,78,	Sarawak	abs. 6,170,163
	79,80,81,		rev. 57
	82,89,90,	Skipton, Vic	abs. 114
	92,104,122,	Solomon Islands, PNG	pap. 127
	124,130,137,		rev. 2
	140,145	South Australia	pap. 1,7,33,
	abs. 10,12,21,		46,49,68,
	26,30,32,		70,87,91,
	33,34,35,		136,138
	36,37,38,		abs. 23,48,67,
	39,52,59,		80,99,132,
	60,63,75,		138,140,146,
	86,90,121,		150
	130		rev. 4,14,25
	rev. 12,13,18,	SE Australia	abs. 40,103,133
	43	SE Queensland	pap. 23,41,144
New Zealand	pap. 85,129,133,	SE South Australia	pap. 87,138
	134		abs. 132,146,150
	abs. 1,4,9,		rev. 4
	18,19,41,	SW Western Australia	pap. 4,5,76
	50,63,78,		abs. 13,22,65,
	87,100,101,		79,81,83,
	126,127,129,		105,149
	131,141	Star Mountains, PNG	rev. 51,52
	rev. 60	Stuart Town, NSW	pap. 27
Nombe Rockshelter, PNG	pap. 35		
North-East NSW	pap. 18	Taralga, NSW	pap. 51
	abs. 32,33,35,	Tasmania	pap. 36,37,38,
	38,86		39,40,84,
			86
Northern Territory	pap. 75,142		abs. 25,49,50,
	abs. 112,164		51,63,69,
	rev. 40,42,53		128,134,135,
North Queensland	pap. 19		136,139
North-West Cape, WA	pap. 132		rev. 31,59
	abs. 76	Texas, Qld	abs. 160
Nullarbor	pap. 1,7,33,	Timor, NSW	pap. 8,9,26
	46,50,52,	Trobriand Islands, PNG	pap. 113,114,115,
	68,70,91,		116,117,118,
	93,94,96,		119
	97,98,99,		
	102,136,148		
	abs. 6,15,16,		
	42,43,48,		
	67,80,81,		
	82,83,96,		
	99,120,138,		
	140		
	rev. 14,25,34		

"GEOGRAPHIC INDEX" Helictite 23(supplement):S22 1985

Victoria pap. 21,22,68,
108,141,146
abs. 37,43,44,
54,57,58,
59,72,89,
90,97,108,
114,115,116,
117,118,119,
144,155,156,
157,158,159

Waitomo, NZ pap. 133
Walli, NSW pap. 31
Wanneroo, WA abs. 53
Warrnambool, Vic abs. 59
Wayatinah, Tas abs. 51
Wee Jasper, NSW pap. 44,60,61,62
abs. 52

Wellington, NSW pap. 24,28,43,
90,124
abs. 30

Western Australia pap. 1,3,4,
5,6,7,
46,50,52,
64,68,70,
76,83,91,
93,94,95,
96,97,98,
99,102,132,
136,148

Western Australia abs. 6,13,15,
16,22,27,
28,29,42,
45,48,53,
65,67,70,
71,79,80,
81,82,83,
84,96,99,
105,106,107,
113,120,122,
123,138,140,
148,149

Western Victoria pap. 68,108,141
abs. 58,59,72,
89,108,116,
117,118,119,
144,155,156,
157,158,159

Wombeyan, NSW pap. 44,51,92
Wyanbene, NSW pap. 44,59,145

Yanchep, WA pap. 3
rev. 38

Yarrangobilly, NSW pap. 44,58,80,
81,104,140

Yorke Peninsula, SA abs. 23

HELICITITE CUMULATIVE INDEX FOR VOLUMES 1-22 (1964 TO 1984)

Subject Index

Aeolinite	rev. 32	Cave Description	pap. 1,9,11,
Algae	pap. 10		22,27,41,
Amphipods	abs. 148		49,50,57,
Anaspides	rev. 59		58,60,61,
Anthropology	pap. 33,91,106,		65,66,69,
	113,114,115,		82,83,90,
	116,117,118,		94,95,113,
	119,120,121,		114,115,117,
	125		118,119,120,
	abs. 20,27,28,		121,123,125,
	42,62,87,		126,127,129,
	112,162		130,138,142,
	rev. 7,16,21,		144
	40		abs. 145,160
Archaeology	pap. 9,34,91		rev. 7,12,13,
	abs. 20,42,61,		14,19,57
	62,87,99,	Cave Development	pap. 4,11,28,
	102,153,162		29,30,31,
	rev. 2,16		32,47,48,
	abs. 56		50,55,57,
Arthropods			60,61,64,
			67,68,70,
Bandicoots	abs. 106		71,90,93,
Bats	see also		94,109,111,
	individual species		122,130
	pap. 5,6,17,		abs. 6,9,67,
	18,19,20,		71,80,116
	41,46,88		rev. 8,20,25,61
	abs. 31,34,36,	Cave Diseases	abs. 142
	37,43,54,	Cave Distribution	pap. 12
	55,60,74,	Cave Ecology	pap. 131,136
	88,90,92,		abs. 60,140
	93,124,125,	Cave Fauna	pap. 36,42,47,
	142,143,145		58,86,106,
	rev. 36		131,132,136,
Basalt	pap. 41,108,123		142
Bat Ticks	abs. 64,75		abs. 24,60,61,
Beetles	pap. 105		88,100,101,
	abs. 18,19,59,		113,140,154
	100,108,109,		rev. 7,20,22,
	110,111		29,35,48,
	rev. 23		49,50,59
Biography	pap. 51,139	Cave Flora	pap. 10
Biorhythms	rev. 45		abs. 72
Birds	rev. 7		rev. 20,29,49,50
"Blue Holes"	rev. 26	Cave Heritage	pap. 12
Book-lice	abs. 147	Cave Meteorology	pap. 1,45,62,
Broom,R.S. Dr.	pap. 51		97,147,
<u>Burramys parvus</u>	pap. 92		abs. 72
			rev. 29
Carbon Dioxide	pap. 43,124	Cave Morphology	pap. 1,4,11,
Carbon 14	abs. 42,44,47		29,30,32,
	rev. 14,41		50,58,60,
Cave Art	pap. 33,91,116		61,65,67,
	abs. 53,87,112,		69,83,85,
	162		93,95,115
	rev. 40		120,122,130,
Cave Atmospheres	pap. 43,124		138,144,146,
Cave Chemistry	pap. 7		abs. 9,71,80
"Cave Crickets"	pap. 133,134		rev. 12
	abs. 126,127,128,	Cave Origins	pap. 49
	130,131,132,	(genesis)	abs. 71
	133,134,135,		
	136,137,138,		
	139		

Cave Significance	pap. 12	Isotope Studies	pap. 40
Cave Tourism	pap. 124		
Caving Equipment	pap. 101,107,128, 143	Karst Development	pap. 24 abs. 69
<u>Chalinolobus morio</u>	pap. 46		rev. 6,20,28, 37,51,52
Chemical Hazards	abs. 113		
Chronology	pap. 8,9,24, 26,28,32, 39,55,77, 111	Karst Distribution	pap. 12
	abs. 89	Karst History	pap. 77
	rev. 19	Karst Heritage	pap. 12
Climate	pap. 44,78,104	Karst Hydrology	pap. 37,53,57, 69,71,72, 73,78,82, 97,140,
Climates, cold	pap. 84		abs. 69
	rev. 19		rev. 6,20,29, 58,61
Climatic History	pap. 68,84,105	Karst Landscape	pap. 9,55,56, 63,65,77, 78,79,80
	abs. 99		rev. 4,5,9,11,27
Cockroaches	pap. 135	Karst Morphology	pap. 9,55,56, 63,64,75, 76,81,84, 100,148
	abs. 94,95,123		abs. 67,68,70, 77,79,145,
Collapse	pap. 49		161,163
Collembola	pap. 137		rev. 6,29,33, 51,52,57
	abs. 166	Karst Significance	pap. 12
Conservation	rev. 46		
Coprolites	abs. 84	Lava Caves	pap. 41,108,144
Coral Reefs	rev. 26		abs. 72,89,114, 115,117,118, 119,155
Crane Flies	abs. 1		rev. 57
Crickets	rev. 43	Limestone	abs. 6,21,23, 121,122,149
Crystallography	pap. 145		rev. 5,11,26, 27,29,31, 33,42,53, 57,60
	abs. 2,3	Lizards	abs. 76
Dating	pap. 32,39,102		
	abs. 46,47	<u>Macroderma gigas</u>	pap. 5,19
	rev. 41	Mammals	pap. 3,5
Decapods	abs. 164		abs. 143
Deep Caves	abs. 5	Millipedes	abs. 141
Diptera	abs. 85,86	Mineralogy	pap. 6,7,25,96, 110,145
Dolerite Caves	abs. 51		abs. 4,15,16,17, 73,77,114
Dolines	pap. 81	<u>Miniopterus australis</u>	abs. 39
Dolomite	abs. 45	<u>Miniopterus</u>	
Drowned Karst	rev. 26	<u>schreibersii</u>	pap. 20
Dune Limestones	pap. 4		abs. 26,32,33, 34,35,38, 40,52,58, 144
	rev. 32	Mites	abs. 165
Echolocation	pap. 88		rev. 24
	abs. 74	<u>Myotis adversus</u>	abs. 91
Eels	pap. 132		
Equipment Testing	pap. 101	<u>Nycticeus</u> spp.	rev. 36
Evolution	abs. 30		
Excavated Caves	abs. 44	Prawns	abs. 164
Exploration	pap. 56	Palaeokarst	pap. 77
	rev. 25,28,29		rev. 56
Fish	pap. 132	Palaeontology	See also Fossils, Vertebrate Fossils
Flies	abs. 85,86		pap. 3,51,52, 92,98,99, 102,103
Fossils	See also Vertebrate Fossils, Palaeontology		abs. 22,27,29, 30,81,82, 83,97,102, 103,104,105, 107,121,146, 150,151,153, 155,156,157, 158,159
	pap. 3		rev. 35,38
	rev. 35,38		
Foul Air	pap. 43		
Foxes	abs. 36		
Frogs	pap. 59		
Gastropods	abs. 14		
Glaciation	pap. 84		
Glowworms	abs. 63,129		
Granite Caves	pap. 22,23		
Granite Karst	pap. 22,23		
Groundwater	rev. 42		
Guano Minerals	abs. 15,16		
Gypsum	pap. 129		
Halite	pap. 96		
	abs. 6		
Harvestmen	abs. 41,65,66		
Histoplasmosis	abs. 142		
History, area, regions	pap. 16,87,90, 114		
	rev. 12		
Human Psychology	rev. 45		
Human Physiology	rev. 45		
Isopods	abs. 49,50,152		

Palygorskite	abs. 4,77	Sthenurus	abs. 103,105
Palynology	pap. 52	Stratigraphy	pap. 141
Parasites	abs. 9,99	Stylolites	abs. 45
Phalangeroids	abs. 26,59	Surveying	pap. 2,148
Phosphates	pap. 103		rev. 12,20
Photography	abs. 73	Syncarids	pap. 86
Phototrophism	rev. 56	Syngetic Karst	rev. 32
Phytokarst	pap. 128		
Piping	pap. 10	Tasmanian Devil	abs. 29,84
Platypus	pap. 10	Techniques	pap. 2,34,44,
Pressure Solution	abs. 161		101,107,128,
Pseudokarst	pap. 68,146		140,143
	abs. 57	Thylacine	rev. 12,44
	abs. 45		pap. 98,99,102
	pap. 22,23,39,	Ticks	abs. 20,81,120,
	65,75,77,	Tower Karst	153
	110,112,121,	Tracing	abs. 64,75
	123,125	Tropical Karst	pap. 64
Pseudoscorpions	abs. 10,11,12,		pap. 45,140
	13,25	Tufa	pap. 56,64
Quokka	rev. 38	Tuff Caves	abs. 7,8
Regional accounts	pap. 73		pap. 14
	abs. 8,122	Vertebrate Fossils	abs. 44
	rev. 3,34,46,		See also Fossils,
	53		Palaeontology
Rescue	rev. 44		pap. 28
Rhinolophus <u>megaphyllus</u>	pap. 18		abs. 22,27,29,
Rock Wallabies	abs. 159		89,97,102,
Rodents	abs. 83		104,105,106,
			120,143,146,
			150,151,155,
			156,157,158,
			159
Sandstone	pap. 75	Volcanics	pap. 22,110
Sea Caves	pap. 39		
Sea Levels	pap. 75	Wall Markings	pap. 33,91,142
	rev. 26		abs. 53,112
Sediments	pap. 27,28,29,	Water Chemistry	pap. 1,13,14,15
	31,32,34,		21,37,38,
	35,55,65,		40,48,54,
	68,122,141,		58,65,69,
	abs. 28,62,73,		72,74,78,79
	116,154		rev. 29,61
Shrimps	pap. 132	"Wetas"	pap. 133,134
Silcrete	pap. 146		abs. 126,127,128,
Single Rope Techniques	pap. 107,143		130,131,132,
Snails	abs. 14		133,134,135,
Soils	rev. 4		136,137,138,
Solution Studies	rev. 58		139
Speleothems	pap. 7,10,39,		
	40,96,108,		
	129,145		
	abs. 2,3,6,17		
	rev. 1,20		
Spiders	pap. 42		
	abs. 48,96		
Springtails	pap. 137		
	abs. 166		

Helictite

JOURNAL OF AUSTRALASIAN CAVE RESEARCH

VOLUME 23(supplement)

1985

CUMULATIVE INDEX. VOLUMES 1-22 (1962 TO 1984)

Compiled by A.P. Spate

Edited by Julia M. James and D. J. Martin

CONTENTS

Introduction	S2
Papers Index	S3
Abstracts Index	S10
Reviews Index	S17
Subject Index	S20
Geographic Index	S23



Speleological Research Council Limited