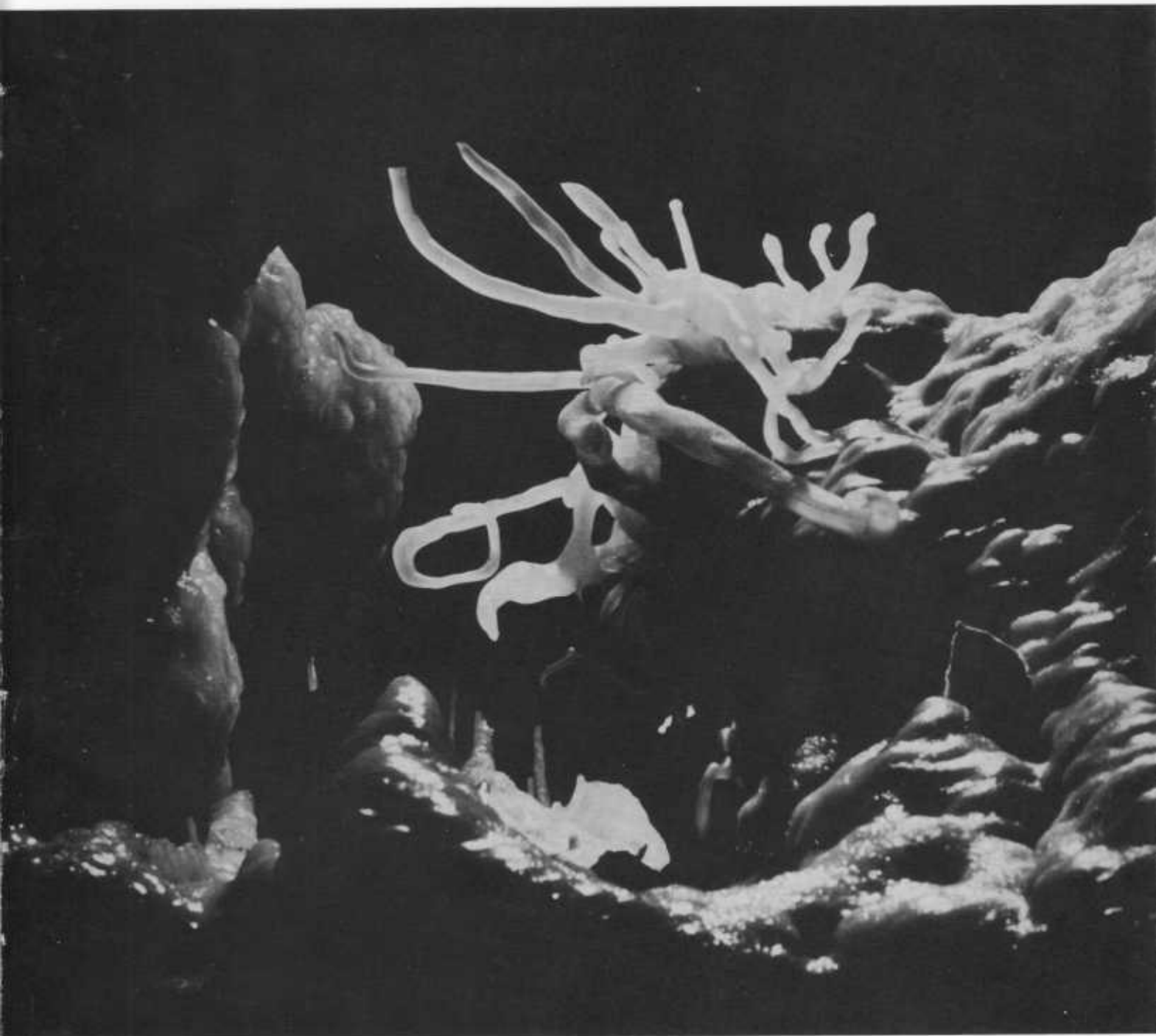


VOLUME 25(1)

1987

Helictite

JOURNAL OF AUSTRALASIAN CAVE RESEARCH



Helictites, Bouverie Cave, Wombeyan, NSW.
Photograph by Les Field.

HELICTITE

Journal of Australasian Cave Research

ISSN: 0017-9973

Helictite was founded by Edward A. Lane and Aola M. Richards in 1962.

This Journal was (and is) intended to be wide ranging in scope from the scientific study of caves and their contents, to the history of caves and cave areas and the technical aspects of cave study and exploration. The territory covered is Australasia in the truest sense— Australia, New Zealand, the near Pacific Islands, New Guinea and surrounding areas, Indonesia and Borneo.

In 1974 the Speleological Research Council Limited agreed to support the Journal with financial assistance and in 1976 took over full responsibility for its production.

The Board of Management

Foundation Editors

Edward A. Lane

Aola M. Richards

Editors

Guy C. Cox

Julia M. James

Business Management

David Martin

Production Management

Bruce R. Welch



Speleological Research Council Limited

The Speleological Research Council Limited, the publisher and owner of Helictite, is a non-profit limited liability company incorporated in May 1964. The aims of the Speleological Research Council Limited are:-

To explore and chart and organize and promote the exploration and charting of caves and cave systems.

To promote, support and assist in the scientific evaluation and investigation of caves and to foster speleology as a science and a sport.

To promote and to assist in the promotion of speleology and speleological Societies and to assist such Societies with grants of money and otherwise.

Other publications by SRC Ltd:

CAVES OF THE NULLARBOR. T.M.L. Wigley and J.R. Dunkley 1968.

- a review of Speleological Investigations in the Nullarbor Plain.

THE EXPLORATION AND SPELEOGEOGRAPHY OF MAMMOTH CAVE, JENOLAN.

J.R. Dunkley 1972. - a detailed history and description.

CAVES THROUGH THE AGES. G. Hangay, J.M. James & M. Dorrell 1974.

- a colouring book for children.

PAPUA NEW GUINEA SPELEOLOGICAL EXPEDITION NSRE 1973. J.M. James 1974.

- the report of the 1973 Niugini Speleological Research Expedition to the Muller Range.

A BIBLIOGRAPHY OF THE JENOLAN CAVES. PART ONE: SPELEOLOGICAL LITERATURE

J.R. Dunkley 1976. - a detailed reference list.

THE CAVES OF JENOLAN, 2: THE NORTHERN LIMESTONE. B.R. Welch (ed) 1976.

Helictite

JOURNAL OF AUSTRALASIAN CAVE RESEARCH

VOLUME 25(1)

1987

CONTENTS

- An Annotated Speleological Bibliography of Oceania
- R. Michael Bourke 3
- Observations on the Buchan Karst during High Flow
Conditions - Brian Finlayson and Mark Ellaway 21
- Deposition of Tufa on Ryans and Stockyard Creeks,
Chillagoe Karst, North Queensland
- D.L. Dunkerley 30

"HELICTITE", Volume 25, 1987 consists of two issues. Price per volume Aust. \$12.00 post paid. "HELICTITE" is printed and published by the Speleological Research Council Ltd. Except for abstracting and review, the contents may not be reproduced without permission of the Editors. All correspondence to: PO Box 183, Broadway, N.S.W. 2007.

WEE JASPER CAVES

by J.N. Jennings.

Reprints from HELICTITE, The Journal of Australian Cave Research, with additional material by Julia M. James and Andy P. Spate, edited by Julia M. James, D.J. Martin and B. R. Welch.



The Speleological Research Council has pleasure in announcing the publication of Wee Jasper Caves. This 48 page book reprints the late J.N. Jennings' definitive papers on the Dip Cave and Punchbowl and Signature Caves. The complete surveys of these caves are included. These papers are accompanied by specially-written descriptions of Careys Cave and Dogleg Cave. The book is illustrated by a recent series of black and white photographs.

The SRC is making a special offer of \$8.00 per copy (post paid) to Helictite subscribers. The normal price will be \$9.50.

Send order with payment to:

Speleological Research Council Ltd.
PO Box 183, Broadway, NSW 2007.



Speleological Research Council Limited

AN ANNOTATED SPELEOLOGICAL BIBLIOGRAPHY OF OCEANIA

R. Michael Bourke

Abstract

A preliminary annotated speleological bibliography is presented for Oceania. The region covered extends from Irian Jaya (Indonesia) in the west to the Galapagos Islands (Ecuador) in the east. There are 268 references given from the following countries and territories: Antarctica, Belau, Cook Islands, Easter Island, Fiji, French Polynesia, Galapagos Island, Guam, Irian Jaya, Mariana Islands, New Caledonia, Niue, Solomon Islands, Tonga, Vanuatu, Western Samoa, Wallis and Futuna.

INTRODUCTION

Some 15 years ago I commenced assembling references to caves of Asia and Oceania. The region extended from Pakistan and Mauritius in the west to the most eastern islands of the Pacific Ocean, excluding only Australia, New Zealand and Japan. It is proposed to publish these bibliographies in three parts covering Oceania, Southeast Asia and Papua New Guinea. As Daniel Gebauer (Germany) and Claude Chabert (France) are compiling bibliographies of South and Southwest Asia, I do not plan to publish material for South Asia. It is not proposed to publish the material for East Asia because of language difficulties. This paper covers Oceania and is the first and smallest of a series of three papers.

Sources used are speleological abstracting journals (Table 1), references cited in papers, those provided by colleagues (see Acknowledgements) and systematic searches of Asian and Pacific journals such as *Mankind*, *Asian Perspectives*, *Oceania* and *Science in New Guinea*. Unlike the Papua New Guinea bibliography, those for Oceania and Southeast Asia are preliminary in that they are not exhaustive and not all references given have been sighted and checked. Generally geological surveys are not included, even though some comment on karst landforms. Papers on bats are only included if caves are mentioned. The cut off nominal year of publication is usually 1984.



Figure 1. The main island groups and nations in Oceania.

OCEANIA

This paper covers the region from Irian Jaya (West New Guinea, a province of Indonesia) in the west to the Galapagos Islands (Equador) and Easter Island (Chile) in the east (Figure 1). Papua New Guinea, Hawaii, Australia and New Zealand are not included. The 268 references from 17 countries and territories are presented in Table 2

Aside from New Guinea, the land area in the region is small. Despite this and the small amount of systematic exploration by speleologists, reports of caves are relatively common in the literature. This is because many islands are formed from volcanic rocks or limestone. In addition caves are frequently used by islanders as sites for art, shelter and burial. They have thus received attention from anthropologists, archaeologists and other students of mankind. The scattered literature indicates that there is considerable potential for systematic exploration and recording by speleologists in the region.

Table 1. Speleological abstracting journals searched for Asian and Pacific papers.

Australian Speleological Abstracts. Sydney Speleological Society, Sydney. Nos. 1-9 (1970-1975).

Current Titles in Speleology. Manol Publications, Crymch, Wales. Nos. 1-16 (1969-1983).

Speleological Abstracts. (Great Britain). Vols. 1-7 (1962-1968).

Speleological Abstracts. International Union of Speleology, Berne, Switzerland. Nos. 1-23 (1969-1984).

H. Trimmel Internationale Bibliographie fuer Spelaologie (Karst und Hohlenkunde)
Wissenschaftliche Beihefte zur Zeitschrift: Die Hohle. (1950-1960).

Table 2. Bibliography of Oceania

ANTARCTICA

CRADDOCK, J.P. and WEBERS, G.F., 1981 Probable cave deposits in the Ellsworth Mountains of West Antarctic. In: B.F. BECK (ed), Proceedings Eighth International Congress of Speleology: 395-397. National Speological Society, Huntsville.

Series of probable cave deposits in the Ellsworth Mountains described.

FUNAKI, M., 1979 (Caves of the iceberg). Japan Caving 11(3/4): 31-39.

GIGGENBACH, W.F., 1976 Geothermal ice caves on Mt Erebus, Ross Island, Antarctica. New Zealand J. Geol. Geophy. 19(3): 365-372.

Ice cave 400 m long on summit plateau of Mt. Erebus.

GRINSTEAD, M.J., 1975 Caving in Antarctica. New Zealand Speleol. Bull. 5(94): 413-415.

Visit to Styn River cave, Trans Antarctic Mountains.

LINDSAY, J.F., 1970 Paleozoic cave deposits in the Central Transantarctic Mountains. New Zealand J. Geol. Geophy. 13: 1018-1023.

BELAU (U.S.A.)

OSBORNE, D., 1966 The archaeology of the Palau Islands. B.P. Bishop Museum Bull. 230: 1-497.

Refers to cave art on Aulong Island.

SIMMONDS, D.R., 1970 Palau cave paintings on Aulong Island. Rec. Auckland Inst. and Mus. 7: 171-173.

Drawings of cave art, Ongewikl Yarsche Cave, Aulong Island.

COOK ISLANDS

CHUBB, L.J., 1927 Mangaia and Rurutus: a comparison between two Pacific Islands. Geol. Mag. 64: 518-522.

Discussion on cave formation on Mangaia Island.

- GILL, W., 1873 Notes on coral caves with human bones in stalagmite on Mangaia, South Pacific. Rep. Brit. Assoc. Trans. Sect. C 43: 144-146.
- GRUNING, E.L., 1937 Notes of burial caves in the Cook Group, South Pacific. Ethnologia Cranmorensis 1: 21-25.
- MARSHALL, P., 1927 The Geology of Mangaia. B.P. Bishop Mus. Bull. 36.
- MARSHALL, P., 1929 Mangaia and Rurutu - a comparison between two Pacific Islands. Geol. Mag. 66: 385-389.
- Caves occur at Lake Tiriara and Tamorna, Mangaia.
- WOOD, B.L., 1967 Geology of the Cook Islands. New Zealand J. Geol. Geophy. 10(6): 1429-1445.
- Refers briefly to caves on Mangaia Island and Atiu Island.

EASTER ISLAND (CHILE)

- GEZE, B., 1975 Les cavernes de L'ile de Paques. Spelunca 15(3): 15-16.
- Description of a number of caves on Easter Island.
- HEYERDAHL, T., 1958 Aku Aku. Allen and Unwin, London.
- Describes large lava tunnels on Easter Island.
- HEYERDAHL, T., 1976 The Art of Easter Island. Allen and Unwin, London.
- Numerous references to caves.
- KIERNAN, K., 1976 The caves of Easter Island. Southern Caver 8(1): 7-13. Tasmanian Caverneering Club, Hobart.
- 30 entrances to lava caves located.
- KIERNAN, K., 1982 Volcano karst on Easter Island. Geo2 10(1): 9. Reprinted Nat. Speleol. Soc. Bull. (USA) 45(1): 2.
- McCOY, P.C., 1979 Easter Island. In J.D. JENNINGS (ed), The Prehistory of Polynesia: 135-166. ANU Press, Canberra.
- p161-2 Caves used as refuge from enemies in former times.
- McCOY, P.M., 1978 The place of near-shore islets in Easter Island prehistory. J. Polynesian Soc. 87(3): 193-214.
- Includes references to small caves.
- NOGRADY, G.L., SZEKELEY, K. and ARPAS, K., 1981 Facial reconstruction of an Easter Island skull. In: B.F. BECK (ed), Proceedings Eighth International Congress of Speleology: 128. National Speleological Society, Huntsville.
- Facial features reconstructed from a skull found in a cave.
- PAVEY, A., 1975 Fantastic Australian roundworld caving expedition. Spar. 46: 3-4. University of N.S.W. Speleological Society, Sydney.
- Brief reference to caves, no details.
- SZEKELEY, K. and NOGRADY, G.L., 1981 Cooperation of speleologist and microbiologist. In: B.F. BECK (ed), Proceedings Eighth International Congress of Speleology: 492. National Speleological Society, Huntsville.
- Caves sampled for microbiological data.

FIJI

- ANON., 1974 Caves in Viti Levu and Yasawas, Fiji. New Zealand Speleol. Bull. 5(90): 310-312.
- Brief description of caves on Viti Levu, Yasawa-I-Rara, Sawe-I-Lau, Vawa, Navita and Waya Islands, including burial caves and rock paintings.

- BALAZS, D., 1973 A delnyugat-csendes-oceaniai-szigeteken tutt utazastol. (Karst in the islands of the southwest Pacific). Karszt-es Batlang-Kutatasi Tajekostate 2: 13-16.
Includes discussion on Fiji karst.
- BALAZS, D., 1976 Comparative investigation of karst waters in the Pacific. Proc. Sixth Internat. Cong. Speleol. 3: 23-32.
Karst waters collected from Viti Levu.
- BIRKS, L. and BIRKS, H., 1973 Dentate stamped pottery from Sigatoka. In: S.M. MEAD, L. BIRKS, H. BIRKS and E. SHAW (eds), The Lapita Pottery Style of Fiji and its associations. Polynesian Soc. Memoir 38: 6-18.
Archaeological excavation in Yanuaa rockshelter, Viti Levu.
- BIRKS, L. and BIRKS, H., 1973 Stone artifacts from Tonga and Fiji. Asian Perspectives 15: 93-96.
Archaeological excavation in Yanuaa rockshelter, Viti Levu.
- BREWSTER, A.B., 1922 The Hill Tribes of Fiji. Seeby, Service & Co., London.
p43 Mention of caves near Nasongo River, Viti Levu.
- COMPLIN, J., 1975 Notes on caves of Fiji. Southwestern Caver 13(1): 17.
- DERRICK, R.A., 1951 The Fiji Islands, A Geographical Handbook. Government Printing Department, Suva.
p52, 219, 223, 309. References to caves in Qilaqila, Mago, Lakebau, Viti Levu, Yasawa-I-Lau, Vatulele and Cicic Islands.
- DERRICK, R.A., 1978 Some Fijian caves. British Caver 69: 23-25.
Notes on caves on Sawa-I-Lau, Viti Levu, Lakeba and Mago Islands.
- DUNKLEY, J.R., 1975 Preliminary speleological reconnaissance of Fiji and Tonga. Proc. 10th Bienn. Conf. Aust. Speleol. Fed.: 107-110.
Caves described at Wailotua and Singatoka Valley, Viti Levu.
- FISON, L., 1881 Notes on Fijian burial customs. J. Royal Anthropol. Instit. 10: 137-149.
p143-144 Burial caves, Lakemba.
- FLOWER, W.H., 1881 On the cranial characters of the natives of the Fiji Islands. J. Royal Anthropol. Instit. 10: 153-173.
p155 Skulls obtained from a burial cave, Wakuku, Singatoka River.
- GARDINER, J.S., 1898 The geology of Rotuma. Geol. Soc. Lond. Quart. J. 54: 1-11.
Two lava caves described, including map of An Mafiri Cave.
- GIFFORD, E.W., 1951 Archaeological excavations in Fiji. Anthropol. Rec. 13(3): 189-288. University of California, Berkeley.
p191-193, 245-246, 252-253 Archaeological sites and burials in rockshelters and caves. Viti Levu.
- GILBERT, T., 1971 Caves of Fiji. Chelsea Speleol. Soc. Newsl. 13(8): 81.
- GILBERT, T., 1971 Lettre de Suva. Grottes et Gouffres 46: 33-34. Speleo-Club de Paris, Paris.
- GILBERT, T., 1984 Limestone and volcanic caves of the Fiji Islands.
Caves described from Viti Levu and Taveuni Islands.
- GILBERT, T. and GILBERT S., 1970 Underground tunnels in Viti Levu. Chelsea Speleol. Soc. Newsl. 12(7): 59.
Visits to two caves on Viti Levu.
- HAMMOND, B., 1975 A Fijian burial cave. Exeter Univ. Speleol. Soc. Newsl. 1(1): 5-7.

- HENDERSON, G.C., 1931 The Journal of Thomas Williams. Missionary in Fiji, 1840-1853. Angus & Robertson, Sydney.
p12, 70-71. Nasangkalou Caves, Lakemba visited.
- HESSE, G., 1967 Three days of sailing off the map. San Francisco Examiner 14/5/1967:1.
Visit to caves on Sawi-I-Lau.
- HILL, W.R., 1959 Rock carvings of Natewa Bay and Nasavusavu. Trans. Proc. Fiji Soc. 6: 74-84.
Carvings in cave on Sawa-I-Lau.
- HOUTZ, R.E., 1960 Geology of the Singatoka area. Geol. Surv. Fiji Bull. 6.
Refers to caves in Singatoka Valley.
- KOSACK, H.P., 1952 Die verbreitung der karsturd psedokars Leinotgen uber der Erde. Petermaring Geol. Mit. 96: 16-22.
Lava caves in Fiji.
- LADD, H.S. and HOFFMEISTER, J.E., 1945 Geology of Lau, Fiji. B.P. Bishop Mus. Bull. 181.
Refers to caves in Lau group.
- MAA, T.C., 1962 Records and descriptions of Nycteribiidae and Streblidae (Diptera). Pacific Insects 4(2): 417-436.
p430 Collection from Wailotua Cave.
- MAA, T.C., 1966 Partial revision of the Cyclopodiinae (Diptera: Nycteribiidae). Pacific Insects 8(3): 648-685.
p651 Collections from Wailotua, Colombo and Kalabu Caves.
- MAA, T.C., 1980 A preliminary revision of the genus Myophthiria Pondanic (Diptera, Hippoposcidae). Rev. Suisse Zool. 87(3): 835-861.
p851-2 Specimens from Asinu and Wailotua Caves, Viti Levu.
- PALMER, B., 1968 Cave and shelter sites at Vatukoula, Fiji. New Zealand Archaeol. Assoc. Newsl. 11(4): 150-154.
Notes on caves and rockshelters, Vatukouila, Viti Levu.
- PALMER, J.B., 1968 Recent results from the Sigatoka archaeological program. In: I.YAWATO and Y.H. SINOYO (eds), Prehistoric Culture in Oceania: 19-28. B.P. Bishop Museum Press, Honolulu.
Archaeological excavation in Yanuaa rockshelter, Sigatoka Valley.
- PALMER, B., 1973 Fiji. Asian Perspectives 14: 95-97.
Archaeological excavation of rock shelters on Joske's Thumb near Suva.
- PALMER, B., 1973 Fiji. Asian Perspectives 15: 200-201.
Archaeological excavation in lava tube on Wakaya Island.
- PALMER, J.B. and CLUNIE, F., 1970 Rock paintings and engravings in Fiji. Educational Series 1. Fiji Museum, Suva.
Review includes cave sites.
- PAPP, L., 1984 Cavernicolous Milichiidae (Diptera): three new species from Fiji and Sri Lanka. Rev. Suisse Zool. 91(2): 241-247
Description of two new cave dwelling species from Wailotua Cave, Viti Levu.
- PARKE, A.L., 1965 Archaeology in Fiji. Trans. Proc. Fiji Soc. 8: 10-42.
Review includes a number of sites in caves and rockshelters.
- PARKE, A.L., 1969 Legends, language and archaeology of Rotuma. Trans. Proc. Fiji Soc. 10: 97-115.

Refers to volcanic caves on Toruma Island.

PECK, S.B., 1983 Recherches biospeleologiques dans le Sud-Pacifique. Mem. Speleo-Club de Paris 9: 33-38.

Cava fauna from Wailotua Cave.

SANBORN, C.C., 1931. Bats from Polynesia, Melanesia and Malaysia. Field Mus. Nat. Hist. Zool. Ser. 18(2): 7-29.

p23 Bats collected from Colombo Cave, Viti Levu.

SAWYER, B. and ANDREWS, E.C., 1901 Notes on the caves of Fiji, with special reference to Lau. Proc. Linn. Soc. New South Wales 26: 91-106.

Caves in Singatoka Valley (Viti Levu), and Lau group. Used for burial and refuge.

SEN GUPTA, T., 1979 A new subfamily of Merophysiidae (Claricornia: Coleoptera) and descriptions of two new species of Gomya Dajoz and its larva. Rev. Suisse Zool. 86(3): 691-698.

New cave-dwelling species from Fiji.

SMYTHE, S.M., 1864 Ten Months in the Fiji Islands. Parker, Oxford.

p61 Cave entrance seen 12 miles up Navua River, Viti Levu; p131-2 visit to cave on Lakemba Island used for breadfruit fermentation.

SNOW, P.A., 1953 Rock Carvings in Fiji. Trans. Proc. Fiji Soc. 4: 71-83.

Engravings in cave at Sawailau, Yasawa Island.

STRINATI, P., 1978 A caving trip around the world. The British Caver 71: 1-3.

Visited Wailotua Cave, Viti Levu.

STRINATI, P. and AELLEN, V., 1983 Voyage biospeleologique autour du monde. Mem. Speleo-Club de Paris 9: 7-29.

Visited Wailotua Cave, Viti Levu.

THOMPSON, L.M., 1938 Adzes from the Lau Islands. J. Polynesian Soc. 47(187): 97-108.

p99 Adze and skeletal material from a cave on Ongea, Lau group.

THOMPSON, L.M., 1940 Southern Lau - An Ethnography. B.P. Bishop Mus. Bull. 62.

p108, 220, 221 Reference to caves, fortified caves and cave burials.

VANDEL, A., 1964 Biospeleology. The Biology of Cavernicolous Animals. Pergamon, Oxford.

A shrimp with reduced eyes is known from Fiji caves.

VILLIERS, A., 1979 Ploiaria speluncaria, nouvel Emesine cavernicole des Iles Fiji (Heteroptera: Reduviidae). Rev. Suisse Zool. 86(2): 573-576.

New Cave-dwelling Emesina described from Wailotua Cave, Viti Levu.

WATLING, D. and PERNETTA, J.C., 1977 Limestone caves in the Sigatoka Valley, Vit Levu, Fiji. Stud. Speleol. 3(2): 78-86.

Five caves visited. Evidence of human usage. Cave fauna discussed.

WILLIAMS, T., 1858 Fiji and the Fijians. Heylin, London.

p186 Very brief reference to cave burials at Kadava.

FRENCH POLYNESIA (FRANCE)

ANON., 1975/76 Les "speleo" d'Orofara. Bull. Speleo Club de Lassalien 9/10.

Proposed caving expedition to Tahiti.

BESSELL, H.S., 1931 Cruising with the Wanderlusts: 60-61, 211-215. Saturday Night Publ., Los Angeles. Reprinted as Caves of The South Pacific. Speleo 9(2/3); 10(1): 9-11. South West Essex Tech. College Caving Club.

Description of crevice karst and caves Kakatec Island and Rurutu Island.

GAUGUIN, P., 1980 Noa-Noa. Marit. d'Outre Mer, Paris.

Describes cave at Maraa, Tahiti.

GEZE, B., 1963 Observations speleologiques dans le Pacifique. Spelunca Mem. 3: 103-114.

Visited Grotte de Maraa, Tahiti.

MAHUNKA, S., 1982 Neue und interessante Milben aus dem Genfer Museum XLVI. Oribatiden der Pazifischen Region (Acari Oribatida). Rev. Suisse Zool. 89(2): 379-394.

Oribatid sp. identified from cave guano sample from Tahiti.

NICHOLAS, B., 1967 Caves of the South Pacific. Huntsville Grotto Newsl. 8(10): 156-159.

Lava tubes found on Tahiti, Moorea, Raiteai and Bora Bora.

NICHOLAS, B.G., 1970 Caves of the South Pacific - revisited. Huntsville Grotto Newsl. 11(9): 73-75.

STRINATI, P. and AELLEN, V., 1983 Voyage biospeleologique autour du Monde. Mem. Speleo. Club de Paris 9: 7-29.

Visited Grotte de Maraa (2 caves), Tahiti.

VARNEDOE, B., 1972 Caving (and other things) in the south seas. Huntsville Grotto Newsl. 13(12): 105-106.

Caves in Marquesas Islands.

VARNEDOE, B., 1973 The Marquesan cave survey. Huntsville Grotto Newsl. 14(1): 7-11.

Listing of 111 sea caves on five islands of Marquesas group.

GALAPAGOS ISLANDS (ECUADOR)

BALAZS, D., 1972 Mapping of lava tunnels on Santa Cruz Island. Noticias de Galapagos 19-20: 10-20.

BALAZS, D., 1975 Cave tubes on the Galapagos Islands. Nat. Spel. Soc. Bull. 37(1): 1-4.

Map and description of two lava tubes on Santa Cruz Island.

DARWIN, C., 1916 Journal of Researches into the Geology and Natural History of the Various Countries Visited during the Voyage of H.M.S. Beagle Round the World. J.N. Dent & Sons, London.

Refers to lava tunnels.

DENAYER, M.E., 1968 Una excursion de la Escuela Politecnica de Goayaquil las Islas Galapagos. Noticias de Galapagos 9/10: 8-10.

LELEUP, N., 1967 Existence d'une faune cryptique relictuelle aux iles Galapagos. Noticias de Galapagos 5/6: 4-16.

Obligate cave organisms reported.

LELEUP, N., 1968 Introduction. Mission Zoologique Belge aux iles Galapagos et en Ecuador. (N. et J. Leleup, 1964-65). Resultats Scientifiques. Koninklijk Museum voor Midden-Africa: Musee Royal de l'Afrique Central. Premiere Partie: 9-39.

MONTORIOL-POUS, J. and de MIER, J., 1977 Contribucion al conocimiento vulcano - espeleologica de la isle de Santa Cruz (Galapagos, Ecuador). Speleon 23: 75-91.

PAEPE, de P., 1965 Cavity filling in rocks from tunnels on Galapagos Islands. Noticias de Galapagos 5/6.

STEADMAN, D.W., 1981 Vertebrate fossils in lava tubes in the Galapagos Islands. Proc. Eighth Int. Cong. Speleol.: 549-550.

Fossil vertebrates collected and identified from lava tubes.

STOOPS, G., 1967 On the presence of lava tunnels on Isla Santa Cruz. Noticias de Galapagos 5/6: 17-18.

GUAM (U.S.A.)

- ENNIS, J., 1965 Mt Jumullong Manglo and Inarojan Cave, Guam, U.S.A. Potomac Caver 8(1): 92-94
- WARD, P.E., 1956 Cave pictographs of Guam Islands. Nat. Spel. Soc. News 14(9): 88. Reprinted British Caver 28: 52-53 (1957).
Cave art on Guam.
- WARD, P.E., 1956 Growth rate of a small stalactite. Nat. Spel. Soc. News 14(3): 29-30. Growth rate of stalactite in a man made cave.

IRIAN JAYA (INDONESIA)

- ANDERSON, E.G., 1973 Karst of the Kemalu Plateau, Irian Jaya, Indonesia. Aust. Spel. Fed. Newsl. 59: 8-9.
Karst features discussed.
- BAAL, J. VAN, GALIS, K.W. and KOENTJARANINGRAT, R.M., 1984 West Irian. A bibliography. Koninklijk Instituut Voor Taal-, Land-en Volkenkunde Bibliographical Series 15. Foris Publications, Dordrecht.
This recent bibliography provides further references to rock art and geology.
- BENTHEM JUITING, W.S. van, 1940 Mollusken-schalen von praehistorischen Mahlzeitres ten aus der Hoehle Dudumunir in West Neuguinea. Nova Guinea (n.s.) 4: 11-30.
Prehistorical mollusc shells from Dudumunir Caves.
- BALAZS, D., 1968 Karst regions in Indonesia. Karst-es Barlangkutatas 5: 3-61. Reviewed Helictite 6(3): 56-59 (1968).
Review includes discussion and maps of karst in Irian Jaya.
- BAR, G.B., CORTEL, H.J. and ESCHEN, A.E., 1961 Geological results of the Star Mountains expedition. Nova Guinea 4: 39-95.
Includes discussion on karst.
- BERGER-KIRCHNER, L., 1960 The rock art of West New Guinea. In: H.G. BANDI et al. (eds), The Art of the Stone Age: 231-239. Methuen, London.
- BERGMAN, R.A.M., 1954 Rotstekeningen in West Nieuw-Guinea. Cahiers de la Biloque 4: 111-119.
Cave art from MacCluer Gulf.
- BRONGERSMA, L.D. and VENEMA, G.F., 1962 To the Mountains of the Star. Hodder and Stoughton, London. p77-78 reprinted in Western Caver 8(6): 118-119.
p53, 61, 77-78, 110, 137, 219 Refers to karst and caves in Star Mountains.
- CATOR, W.J., 1939 Rotsteekeningen in West Nieuw-Guinea. Cultureel Indie 1: 246-251.
Cave art, MacCleur Gulf.
- DI MAIO, M., 1974 Osservazioni speleologiche in Nuova Guinea. Grotte 17(53): 26-28. Gruppo Speleologico Piemontese, Turin.
Observations on karst in highlands (Mt Kelabo): small cave on Schouten Island; and historical cave on Biak.
- DOZY, J.J., 1939 Geological results of the Carstensz Expedition, 1936. Leidsche Geol. Medodelingen 11: 68-131.
- ELSMORE, R.T., 1945 New Guinea's mountain and swampland dwellers. Nat. Geographic Mag. 88(6): 670-694.
p173 Warok River (tributary of the Baliem) goes underground and emerges 1 mile away.
- GALIS, K.W., 1957 De grotten van Jaand. Nieuw-Guinea Studien 1(1): 14-23.
Folk tale connected with cave drawings from Jafi area.

- GALIS, K.W., 1957 De Pinfeloe-grot nabij Tainda. Nieuw-Guinea Studien 1(2): 118-129.
Cave art from near Tainda.
- GALIS, K.W., 1964 Eerste rotsgravingen in Nederlands Nieuw-Guinea ontdekt. Bijdragen tot de Taal-, Land- en Volkenkunde 117: 464-474.
- GALLIS, K.W., 1964 Oudheidkundig nieuws uit Westelijk Nieuw-Guinea. Bijdragen tot de Taal-, Land-, en Volkenkunde 120: 263.
Cave Art.
- GALLIS, K.W., 1969 Nogmaals Sentani. Kulturpatronen 10-11: 59-95.
- GARDNER, R. and HEIDER, K.G., 1968 Gardens of War. Life and Death in the New Guinea Stone Age. Random House, New York.
Includes art sites in the Baliem Valley.
- HARRER, H., 1964 I Come from the Stone Age. Hart-Davis, London.
p154-155 Brief reference to use of a cave as a shelter.
- HEIDER, K.G., 1967 Archaeological assumptions and ethnographic facts: a cautionary tale from New Guinea. Southwestern J. Anthropol. 12: 52-64.
Refers to art sites in rock shelters, Baliem Valley.
- HEIDER, K.G., 1970. The Dugum Dani. Aldine, Chicago.
p181-188 Rock art described in Baliem Valley; p204 Refers to karst and two caves.
- HILLE, J.W. van, 1905-1907 Reizen in West Nieuw-Guinee. Tijdschrift Kon. Ned. Aard. Gen. Vol. 1-22, 1905; 2-23, 1906; 3-24, 1907.
Cave art, MacCleur Gulf.
- HOPE, G.S., 1977 Observations on the history of human usage of sub-alpine areas near Mt. Jaya. Irian Bull. Irian Jaya Dev. 6(2): 41-72.
Mapala rockshelter, Mt. Jaya, investigated.
- HOPE, G.S., PETERSON, J.A., RODOK, U. and ALLISON, I., 1976 The Equatorial Glaciers of New Guinea. Balkema, Rotterdam.
p. 211-212, 233-235 Refers to karst, caves, shelters, archaeological material on Mt Jaya (Carstensz).
- HUGO, D., 1974 The pre-historic rock art of New Guinea and island Melanesia. B.A. Hons. thesis, University of Queensland.
Review includes sites in Irian Jaya.
- KUHN, H., 1888 Mein Aufenthalt in New Guinea. Festschrift des Vereins für Erdkunde, Dresden.
Cave art, MacCluer Gulf.
- MAA, T.C., 1962 Records and descriptions of Nycteribiidae and Streblidae (Diptera). Pacific Insects 4(2): 417-436.
p434 Specimens from Danowaria caves near Fakfak.
- MITTON, R.D., 1972 Stone as a cultural factor in the Central and Eastern Highlands. Irian 2(3): 4-11.
Refers to rock art from Baliem Valley and Mt Juliana.
- MONTAGNE, D.G., 1949 Geologie en topografisch beeld, II. Tijdschrift Kon. Ned. Aard. Gen. 66: 468-472.
Description of karst canyon and natural bridge, Warok River.
- PANNEKOEK, A.J., 1941 Eenige Karstterreinen in Nederlandsch-Indie. Nederlandsch Indische Geog. Mededeelingen 1: 16-19.
Karst of Irian Jaya.

- PANNEKOEK, A.J., 1948 Eenige Karstterreinen in Indonesie. Tijdschrift Kon. Ned. Aard. Gen. 65: 209-214
- RAGLAN, Lord, 1940 Rock paintings in Dutch New Guinea. Man 40: 31.
Comment on Rowe (1940).
- RODER, J., 1938 Felsbildforschung auf West-Neuguinea. Paideuma 1(2): 75-88.
Cave art, MacCluer Gulf.
- RODER, J., 1938 Praehistorische Forschungen im MacCluer-Golf (Hollaendisch West-Neuguinea). Frankfurter Wochenschau 26: 320-322.
Caves mentioned in paper on prehistorical research.
- RODER, J., 1938-39 Praehistorische onderzoekingen in de MacCluer Golf (Nederlands West N. Guinea). Tijdschrift Nieuw Guinea 3: 531-540.
Rock art, MacCluer Gulf.
- RODER, J., 1939 Felsbilder und Vorgeschichte in Hollaendisch West-Neuguinea. Die Umschau 8: 174-176.
Rock art.
- RODER, J., 1939 Rock-pictures and prehistoric times in Dutch New Guinea. Man 39(173): 175-178.
Rock art, MacCluer Gulf.
- RODER, J., 1939 Technik der Felsbilderaufnahme. Cultureel Indie 1: 235-237.
Techniques for photographing rock paintings.
- RODER, J., 1940 Ergebnisse einer Probegrabung in der Hoehle Dudumunin auf Arguni, MacCluer Golf (Holl. West Neuguinea). Nova Guinea (n.s.) 4: 1-10.
Archaeological dig, Dudumunin cave.
- RODER, J., 1940 Geister der Vergangenheit auf Felsbild-Fahrt in Neuguinea. Nova Guinea (n.s.) 4: 31-108.
Rock art, MacCluer Gulf.
- RODER, J., 1955 The rock paintings of the MacCleur Bay, (Western New Guinea). Antiquity and Survival 1: 387-400.
Rock art in caves, MacCluer Gulf.
- RODER, J., 1959 Felsbilder und Vorgeschichte des MacCluer-Golfes, West New Guinea. Wittig Verlag, Darmstadt. 162pp.
Review of rock art, MacCluer Gulf.
- ROWE, W.P., 1940 Rock-paintings in Dutch New Guinea. Man 40(21): 16.
Comment on Roder (1939).
- RUTTEN, L.M.R., 1925 Forminiferenhouddende gesteenten uit het gebied van de, "Vogelkop" op Nieuw Guinea. Jaarb. Mijrw. in Ned. Ind. 1924: 147-167.
Refers to Ajameru karst region.
- SOLHEIM, W.G., 1962 Review of Josef Roder. Felsbilder und Vorgeschichte des MacCluer Golfes, West New Guinea. J. Polynesian Soc. 71(1): 127-129.
Cave art, MacCluer Gulf.
- SPECHT, J., 1979 Rock art in the Western Pacific. In S.M. MEAD (ed), Exploring the Visual Art of Oceania: Australia, Melanesia, Micronesia and Polynesia: 58-82. University Hawaii Press, Honolulu.
In Irian Jaya cave art is common in the MacCluer Gulf. Painted sites mainly occur in shelters in the highlands.
- TICHELMAN, G.L., 1939 Dr J. Roder over Rotsteekeningen aan de MacCluer-Gulf (Nederlandsch West Nieuw-Guinea). Cultureel Indie 1: 84-88.

Cave art, MacCluer Gulf.

TICHELMAN, G.L., 1940 De handsilhouetten der Nieuw-Guineesche rotsschilderingen. Cultureel Indie 2: 154-156.

TICHELMAN, G.L., 1941 Rotsschilderingen in Papuea. Indische Gids 63: 420-430.

TICHELMAN, G.L., 1949 Kunstenaars der rotsen: rotsschilderingen op Nieuw-Guinea en in Europa. Universum 20: 6.

TICHELMAN, G.L., 1953-54 Nieuw-Guineese rotsschilderingen om de nek van de Vogelkop. Tijdschrift Nieuw-Guinea 14: 161-167.

Rock art, MacCluer Gulf.

TICHELMAN, G.L., 1954 L'Art primitif de la Nouvelle-Guinee: peintures rupestres sur les falaises dans le Golf MacCluer. Bull. de la Soc. Roy. Belge Anthropol. Prehist. 65: 155-159.

TICHELMAN, G.L., 1954-55 Nieuw-Guineese rotsschilderingen om de nek van de Vogelkop. Tijdschrift Nieuw-Guinea 15: 1-6.

Rock art and legends from caves, MacCluer Gulf.

TICHELMAN, G.L., 1954-55 Rotstekeningen van een bronzen bijltje. Tijdschrift Nieuw-Guinea 15: 75-79.

TICHELMAN, G.L., 1956 Rotstekeningen. Schakels Nederl. Nieuw Guinea 25: 18-25.

TICHELMAN, G.L. and DE GRUYTEN, W.J., 1944 Nieuw-Guinea Oerkunst. Serie No. 1. Vormen en verbeeldingen in Indonesia. van Hoeve, Deventer.

VERSTAPPEN, H. Th., 1960 Some observations on karst development in the Malay archipelago. J. Trop. Geogr. 14: 1-10.

Brief discussion of karst of Vogelkop Peninsula.

VERSTAPPEN, H. Th., 1960 Preliminary geomorphological results of the Star Mountains Expedition 1959, Central Netherlands New Guinea. Tijdschrift Kon. Ned. Aard. Und. Gen. 77: 305-311.

VERSTAPPEN, H. Th., 1964 Geomorphology of the Star Mountains. Nova Guinea, Geol. 11(5): 101-158. (Abstract Helictite 3(3): 60-61.)

Refers to karst in Sikil Valley.

VERSTAPPEN, H. Th., 1964 Karst morphology of the Star Mountains (Central New Guinea) and its relation to lithology and climate. Zeitschr. f. Geomorphol. N.F. 8: 40-49. (Abstract Helictite 3(3): 60-61.)

Karst types of Star Mountains described.

VERSTAPPEN, H. Th., 1969 The state of karst research in Indonesia. Studia Geogr. 5: 139-148.

Includes karst research in Irian Jaya.

MARIANAS (U.S.A.)

MICHORSKA, J., 1957 Jeskyne na ostruve Rota. Csl. Kras 10(2): 91.

Caves of Rota Island.

OXBORROW, T., 1971 The Grotto Saipan, Philippine Sea, Pacific Ocean. Cave Lights 8: 2-8. (Great Basin Grotto, Reno, Nevada.)

SPOEHR, A., 1957 Marianas prehistory. Fieldiana: Anthropol. 48 (Field Museum of Natural History, Chicago.)

pl71 Burials in Laulau rock shelter, Saipan.

TORII, H., 1960 A consideration of the distribution of some troglobionts of Japanese caves. Jap. J. Zool. 12: 555-584.

Survey of fauna of Marianas caves.

WARD, P.E., 1956 The Caves of Rota Island. NSS News 14(7): 75.

Caves described from Rota Island.

YAWATA, I., 1963 Rice cultivation of the ancient Mariana Islands. In J. BARRAU (ed), Plants and Migration of Pacific Peoples: 91-92. Bishop Museum Press, Honolulu.

Two human skeletons found in a cave on Assonson Island.

NEW CALEDONIA (FRANCE)

ADAMS, C., 1968 Cave exploration. Groping among human bones. Australian Outdoors 39(6): 52-55.

Art and burials in caves on Lifou Island.

ANON., 1975 Legends from Lifou. Son of the earth. South Pacific Bull. 25(1): 44.

Legend includes mention of a cave.

AVIAS, J., 1959 Erosion karstique en Nouvelle-Caledonie. Mem. Assoc. Internat. Hydrologeol. 1/2: 84-87.

BALOUET, J.-C., 1984 Les etranges fossiles de Nouvelle Caledonie. La Recherche 15(153): 390-392.

Bones of large turtles found in a cave.

BEIER, M., 1968 Some cave dwelling pseudoscorpionides from Australia and New Caledonia. Rec. S. Aust. Mus. 15(4): 757-765.

BESUCHET, C., 1981 Description d'un Coleoptera Scydmenide cavernicole de la Nouvelle-Caledonie. Rev. Suisse Zool. 88: 459-461.

BOURKE, R.M., 1976 Caves of New Caledonia and the New Hebrides. Niugini Caver 4(4): 165-170. (Papua New Guinea Cave Exploration Group, Port Moresby.)

Brief review of caving regions of New Caledonia.

BRIGNOLI, P.M., 1980 On new Mysmenidae from the Oriental and Australian regions (Araneae). Rev. Suisse Zool. 87: 727-738.

Includes cave fauna from New Caledonia.

BRIGNOLI, P.M., 1980 Sur Usofila pecki n.sp., araigner caverniole de la Nouvelle-Caledonie (Araneae, Telemidae). Rev. Suisse Zool. 87(2): 605-609.

Cave dwelling spider described from Taphozous Cave.

BRIGNOLI, P.M., 1981 New or interesting Anapididae (Arachnida, Araneae). Rev. Suisse Zool. 88: 109-134.

CROMPTON, R.H., 1917 New Caledonia and the Isle of Pines. Geographical J. 49(2): 81-106.

p88-89 Brief reference to caves near Yengen.

CONDE, B., 1980 Diploures Campodeides des grottes de Nouvelle-Caledonie. Rev. Suisse Zool. 87: 193-200.

FENNAH, R.G., 1980 A cavernicolous new species of Notuchus from New Caledonia (Homoptera: Fulgoroidea: Delphacidae). Rev. Suisse Zool. 87: 757-759.

GEZE, B., 1963 Observations speleologiques dans le Pacifique. Spelunca Memoires 3: 103-114.

Visit to a cave at Koumac.

HAMILTON-SMITH, E., 1965 Some cave fauna from New Caledonia. Communications Occasional Paper 1: 17-18. Sydney Speleological Society, Sydney.

Comments on cave fauna collected in 1962-63 expedition.

HARRIS, S. (ed), Caves of New Caledonia. Report of the 1975 Australian Expedition. Published privately, Hobart.

HAYLLAR, T., ANDREWS, W. and HAWKEN, A., 1965 New Caledonia - Exploration. Communications Occasional Paper 1: 8-16. Sydney Speleological Society, Sydney.

Report on trip to caves near Poya, Ouave, Houailou, Hienghene and Lifou Island.

- HUNTLEY, D.J., DICKINSON, W.R. and SHUTLER, R., 1983 Petrographic studies and thermoluminescence dating of potsherds from Mare and Ouvea, Loyalty Islands. Archaeol. in Oceania 18(2): 106-108.
- Small burial caves found on Ouvea Island.
- JUBERTHIE, C., 1979 Un cyphophthalme nouveau d'une grotte de Nouvelle-Calédonie: Troglodiro ealleni n.gen., n.sp. Rev. Suisse Zool. 86: 221-231.
- MAA T.C., 1980 A preliminary revision of the genus Myophthiria Rondani (Diptera, Hippoboscidae). Rev. Suisse Zool. 87: 835-861.
- p854-5 Specimens from Koumac and Taphogous Caves.
- MALICKY, H., 1981 Eine neue Chimarra aus Neukaledonien (Trichoptera, Philoptomidae). Rev. Suisse Zool. 88: 341-342.
- MOORE, B.P., 1966 Australian biospeleological expedition to New Caledonia, 1965-1966. Helictite 4: 88.
- Brief report on Australian expedition.
- PAGES, J., 1978 Dicellurata genavensia VI Japygides du Sudest Asiatique No. 2. Rev. Suisse Zool. 85: 597-606.
- Description of two new species from New Caledonia.
- PECK, S.B., 1983 Recherches biospeleologiques dans le Sud-Pacifique. Mem. Speleo-Club de Paris 9: 33-38.
- Cave fauna from caves at Ouave, Adio and Koumac.
- RIESENFELD, A., 1950 The Megalithic Culture of Melanesia. E.J. Brill, Leiden.
- p542 Brief reference to interment in limestone caves.
- SANBORN, C.C., 1950 Bats from New Caledonia, the Solomon Islands, and New Hebrides. Fieldiana Zool. 31(36): 313-338.
- Discussion of bats occurring in caves at Poya and Hienghene.
- SARASIN, F., 1929 Ethnologie der New Caledonier und Loyalty-Insulaner. Kreidel, Munchen.
- Cave burials occur at Ouave.
- SARASIN, F., 1931 Aus den Tropen. Helbing and Lichtenhahn, Basel.
- p178-179 Mention of caves in the Loyalty Islands.
- SHUTLER, R., 1969 Melanesia: 1966-1967. Asian Perspectives 10: 123-126.
- Report of small burial caves on Ouvea and caves on Mare.
- STRINATI, P. and AELLEN, V., 1983 Voyage biospeleologique autour du Monde. Mem. Speleo-Club de Paris 9: 7-29.
- Description of a number of caves from New Caledonia and Isle of Pines.
- WALTHAM, A.C., 1976 The World of Caves. Orbis, London.
- p66 Plate of a cliff cave in New Caledonia.
- WIRTHMANN, A., 1970 Zur geomorphologie der peridotite auf New Kaledonien. Tubinger. Geogr. Stud. 34: 191-202.
- Notes that numerous closed depressions occur in peridotite.
- WOUTERS, W., 1982 Nieuw Caledonie trekking 83. Spelerpes 4: 1-4. (Verbond Vlaamse Speleologen en Alpinisten, Heverlee, Belgium.)
- General article on karst of New Caledonia.

NIUE

- ALLEN, P.S., 1923 Stewart's Handbook of the Pacific Islands. McCarron, Stewart & Co., Sydney.
p64 Notes that caves are common on Niue.
- ANON., 1980 Exploring the subterranean wonderland. Tusitala 4: 10-11, 13. (Polynesian Airlines, Apia.)
Various caves described from Niue.
- GRIMSTED, M. and GRIMSTED, D., 1980 Niue Island. Another point of view. New Zealand Speleol. Bull. 6(111): 261-262.
Description of Vaitanetane and Anatoloa caves.
- HALLIDAY, W.R., 1976 Island of Niue of interest to cavers. Nat. Speleol. Soc. News 34(9): 164.
Notes that caves and karst features are being promoted as tourist attractions.
- KENNEDY, G., 1979 Niue thinks - with trepidation. Pacific Islands Monthly 50(9): 70.
Caves such as Avaiki, Palaha and Talava promoted as tourist attractions.
- LOEB, E.M., 1929 History and traditions of Niue. B.P. Bishop Museum Bull. 32.
p87 Cave at Anaana "found".
- NZPA SPECIAL, 1975 Island caves attraction for tourists. New Zealand Herald Nov. 26, 1975: 10. Reprinted J. Sydney Speleol. Soc. 20(3): 75.
Caves have potential as tourist attractions.
- REEKIE, S., 1979 Niue Island. New Zealand Speleol. Bull. 6(108): 180-183.
Brief description of 13 caves and chasms.
- TROTTER, M.M., 1979 Niue Island Archaeological Survey. Canterbury Museum Bull. 7.
The 100 recorded archaeological sites include 59 caves. Location maps. Discussions of burial caves.

SOLOMON ISLANDS

- ALLEN, A. (ed) (no date) Images and Islands U.N. Special Fund Project. University South Pacific, Suva.
Refers to engravings, Fotoruma cave, Guadalcanal.
- ANON., 1972 Cyclone damages. Pacific Islands Monthly 43(1): 23.
Following a cyclone on Santa Ana and Santa Catalina, most people are living in caves and leafshelters.
- ANON., 1975 Notices and news. Aust. Speleol. Fed. Newsl. 70: 4-6, 10.
Notice of a caving trip to the Solomon Islands.
- BOURKE, R.M., 1976 The caving scene. Niugini Caver 4(2): 67-68; 4(4): 149-150. (Papua New Guinea Cave Exploration Group, Port Moresby.)
Brief notes on trip to Solomon Islands by Australian group.
- BOURKE, R.M. and WEIR, J.R., 1976 An annotated speleological bibliography of the Solomon Islands. Niugini Caver 4(4): 171-173. (Papua New Guinea Cave Exploration Group, Port Moresby.)
Speleological bibliography with 27 entries.
- COLEMAN, P.J., 1962 An outline of the geology of Choiseul, Solomon Islands. J. Geol. Soc. Aust. 8: 135-158.
Karst areas discussed and mapped.

- COOMBE, F., 1911 Islands of Enchantment. Many-sided Melanesia. MacMillan, London.
Art site on Santa Ana is in front of a cave.
- DAVENPORT, W., 1968 Anthropology in the British Solomon Islands. Expedition 11(1): 31-34.
Rock art, archaeological excavation and pottery in caves on Guadalcanal and Santa Ana.
- GLEESON, L., 1976 When Tasmanian caving becomes too rigorous. Southern Caver 8(2): 7-10.
(Tasmanian Caverneering Club, Hobart.)
Includes notes on caves in the Solomon Islands.
- GROVER, J.C., 1960 Phosphate guano in caverns of the Floridas Group. British Solomon Island Geol. Rev. 2, 1959-62: 90-92.
Description of 11 caves containing guano on Small Ngella and Sandfly Islands.
- GUPPY, H.B., 1886 Notes on the characters and mode of formation of the coral reefs of the Solomon Islands. Proc. Roy. Soc. Edin. 31: 857-904.
Refers to caverns of uplifted and sunken reefs.
- GUPPY, H.B., 1887 The Solomon Islands: Their Geology, General Features and Suitability for Colonization. Swan, Sonnenschein & Lowrey, London.
Description of caves on Florida Islands (p26-29); Oima Atoll (p43) and Uqi Island (p87-88).
- HILDER, B., 1955 The caves of the black stalagmites (Solomon Islands). Walkabout April 1st, 1955: 13-16.
Visit to cave on Florida (Nggela) Island.
- HILDER, B., 1961 Navigator in the South Seas. Percival Marshall, London.
p191-196 Visit to a cave on Big Nggella Island.
- HILL, J.E., 1971 Bats from the Solomon Islands. J. Nat. Hist. 5: 573-581.
Bats collected from Riba caves, near Auki, Malaita Island.
- IRWIN, G., 1972 An archaeological survey of the Shortland Islands, B.S.I.P. M.A. Thesis, University of Auckland.
- MAA, T.C., 1966 Partial revision of the cyclopediinae (Diptera: Nycteribiidae). Pacific Insects 8(3): 648-685.
p655 Specimen from Wester cave, Kolombangara.
- PARKER, F., 1972 Notes on some caves of Shortland Island, Solomon Islands. J. Sydney Speleol. Soc. 16(10): 271-276.
Four caves described from Shortland Island.
- SARGENT, P., 1983 Caves and caving in the Solomon Islands. Cambridge Underground 3(3): 56-60. (Cambridge University Caving Club, Cambridge.)
Visit to cave, Mt. Austen, Guadalcanal.
- SPECHT, J., 1979 Rock art in the Western Pacific. In: S.M. MEAD (ed), Exploring the Visual Art of Oceania: Australia, Melanesia, Micronesia and Polynesia: 58-82. Univ. Press Hawaii, Honolulu.
Review of rock art includes Fotoruma cave, Guadalcanal, and Nambulein Cave, Nendo Island.
- STANTON, R.L., 1961 Exploratory notes to accompany a first geological map of Santa Isabel, B.S.I.P. Overseas Geol. Min. Resour. 8(2): 127-149.
Includes description of karst areas.
- UNIVERSITY OF SYDNEY DEPARTMENT OF GEOLOGY AND GEOPHYSICS, 1957 General reconnaissance of parts of the central islands of the B.S.I.P. Colonial Geol. Min. Resour. 6(3): 267-306. Reprinted as Geol. Surv. B.S.I.P. Special Paper No. 1, 1957.

- Limestone and karst discussed from Santa Isabel, Malaita and West Guadalcanal.
- VINCE, S., 1974 Caving in the Solomon Islands. Southern Caver 5(4): 10-11. (Tasmanian Caverneering Society, Hobart.)
- Visit to Matanikon caves, Guadalcanal.
- WEIR, J.R., 1974 Some limestone caves in the British Solomon Islands Protectorate. Labyrinth 6: 30-31. (N.S.W. Institute of Technology Speleological Society, Sydney.)
- Caves noted on Santa Isabel and San Cristobel (Makira).
- WEIR, J. and GREEN, C., 1976 Solomon Islands trip - June/July, 1976. Labyrinth 14: 1-17. (N.S.W. Institute of Technology Speleological Society, Sydney.)
- Description of Kolokofa cave, Santa Isabel; and Mbaol Hol, Guadalcanal.
- WHITE, W.C. and WARIN, O.N., 1959-62 Survey of phosphate deposits in the S.W. Pacific and Australian Waters - Bellona Island. British Solomon Islands Geol. Rec. 2, 1959-62: 72-85.
- Notes that cavernous limestone occurs on Bellona Island.

TONGA

- ANON., 1981 Anahula cave. Tusitala 8: 52. (Polynesian Airlines, Apia.)
- Description of Anahula cave, Tonga.
- BALAZS, D., 1973 A delnyugat-csendes-oceaniai-szigeteken tutt utazastol (Karst in the islands of the southwest Pacific). Karszt-es Barlang-Kutatasi Tajekostate 2: 13-16.
- Discussion on Tongan karst.
- BALAZS, D., 1976 Comparative investigation of karst waters in the Pacific. Proc. 6th Internat. Speleol. Cong., Olomouc. 3: 23-32.
- Karst waters analysed from Tongatapu Island.
- DANIELSSON, M-T. and DANIELSSON, B., 1985 Bligh's cave: 196 years on. Pacific Islands Monthly 56(6): 25-26.
- Visit to cave on Tofua Island said to be used by Bligh in 1789.
- DUNKLEY, J.R., 1975 Preliminary speleological reconnaissance of Fiji and Tonga. Proc. 10th Bienn. Conf. Aust. Speleol. Fed.: 107-110.
- Caves visited near Haveluliku, Tongatapu Island.
- LISTER, J.J., 1891 Notes on the geology of the Tonga Islands. Geol. Soc. Lond. Quart. J. 47: 590-617.
- Describes Ana Aha, Eua Island, as a funnel shaped shaft.
- PAWSON, K., 1974 Tonga Islands caves. The Canadian Caver 6(1): 26.
- Lists 22 caves from Tonga.
- TONGA VISITORS BUREAU, 1973 Agents Manual and Tariff 1973. Nuku'alofa.
- p6 Refers to caves near Haveluliku village, Tongatapu; Swallow's cave and Mariner's cave, Vav'u Island.

VANUATU

- BOURKE, R.M., 1976 Caves of New Caledonia and New Hebrides. Niugini Caver 4(4): 165-170.
- Short review of reported caves of New Hebrides (Vanuatu).
- GARANGER, J., 1966 Recherches archeologiques aux Nouvelles-Hebrides. L'Homme 6: 59-81.
- p63 Cave art in two caves, Lelepa Island.
- GARANGER, J., 1968 Notes succinctes sur les recherches archeologiques effectuees dans les iles du centre des Nouvelles-Hebrides. Asian Perspectives 9: 154-156.

Cave art noted in Grotto Feles, Lelepa Island.

GARANGER, J., 1972 Archeologie des Nouvelles-Hebrides. Societe des Oceanistes Publication 30. Orstom, Paris

p39-40, 43-44 Figs. 49-51, 54-68. Cave art Grotte de Markua and Grotte Feles, Lelepa Island.

GEZE, B., 1963 Observations speleologiques dans le Pacifique. Spelunca Memoires 3: 103-114.

Visit to 2 caves on Efate Island, a burial cave on Erromango and reports a lava cave on Maewo Island.

HEBERT, B., 1963 Les Megalithes sculptes de l'Ile Enau. Etudes Melanesiennes NS 18-20: 56-61.

Cave Art, Grotte Feles, Lelepa Island.

HUMPHREYS, C.B., 1926 The Southern New Hebrides. An Ethnological Record. Cambridge University Press, Cambridge.

p89, 96-7, 175-7, 182-4 Cave art and burials Tanna and Erromango Islands.

LANGDON, R., 1967 Who was Hiu's prehistoric Michaelangelo? Pacific Islands Monthly 38(2): 91.

Rock art in a large cave, Hiu Island, Torres Group.

MAA, T.C., 1980 A preliminary revision of the genus *Myophthiria* Rondani (Diptera, Hippobosidae). Rev. Suisse Zool. 87(3): 835-861.

p847-8 Specimen from Louyenbra Cave, Espiritu Santo.

NEEF, G., 1970 North Pentecost. Ann. Rep. Geol. Surv. New Hebrides, 1970: 15-22.

Karst of North Pentecost discussed.

SANBORN, C.C., 1950 Bats from New Caledonia, the Solomon Islands and New Hebrides. Fieldiana Zool. 31(36): 313-338.

Bats collected from 9 caves, Second Channel and Hog Harbour, Espiritu Santo.

SHUTLER, R., 1969 Melanesia: 1966-1967. Asian Perspectives 10: 123-126.

Refers to rock shelter, Hog Harbour, Espiritu Santo, caves on Malekulu and cave art on Hiu Island, Torres Group.

SHUTLER, M.E., and SHUTLER, R., 1968 A preliminary report of archaeological explorations in the Southern New Hebrides. Asian Perspectives 9: 157-166.

Caves and rock shelters noted on Aneityum, Tanna, Aniwa, Erromango and Efate.

SPECHT, J., 1979 Rock art in the Western Pacific. In: S.M. MEAM (ed), Exploring the Visual Art of Oceania: Australia, Melanesia, Micronesia and Polynesia: 58-82. University Hawaii Press, Honolulu.

Cave art in Grotte de Markus and Grotte Feles, Lelepa Island.

SPEISER, F., 1923 Ethnographische Materialien aus den Neuen-Hebriden und den Banks-Inseln. Kreidel, Berlin.

p192 Refers to 2 caves on Lelepa Island.

WARDEN, A.J., 1967 The 1963-65 eruption of Lopevi Volcano (New Hebrides). Bull. Volcanologique 30: 277-318.

p293 Two lava tunnels recorded during volcanic eruption, Maewo Is. (Fig. 17).

WESTERN SAMOA*

BALAZS, D., 1973 A delnyugat-csendes-oceaniai - szigeteken tutt utazastol. (Karst in the islands of the Southwest Pacific). Karszt-es Barlang-Kutatasi Tajekostate 2: 13-16.

Includes discussion on karst in Samoa.

- BUXTON, P.A., 1935 Summary. In: Insects of Samoa Part 9: 33-104. British Museum (National History), London.
Report on a cricket and pseudoscorpion from caves in Samoa.
- CZOERNIG-CZERHAUSEN, W., 1939 Unterirdische Wasserlaeufe im Vulkangebirge auf Samoa. Mitt. Hahlan-u Karst 1: 40.
- FORD, A.H., 1911. Volcano days in Samoa. Mid-Pacific Mag. 1(5): 582-593; 1(6): 635-641. Reprinted Cascade Caver 15(10): 122-123.
Refers to lava tubes.
- FREEMAN, J.D., 1943 The Sevaio Cave. J. Polynesian Soc. 52(3): 101-109.
Sevaio cave, Upolu Island.
- FREEMAN, J.D., 1944 The Falemauga Caves. J. Polynesian Soc. 53: 86-106.
Description and brief history, Falemauga cave, Upolu Island. Archaeological excavation. Evidence of human occupation.
- OLLIER, C.D. and ZARRIELLO, P., 1979 Pe'ape'a lava cave, Western Samoa. Trans. Brit. Cave Res. Assoc. 6: 133-142.
Description of cave and formation, Pe'ape'a cave, Upolu Island.
- STAIR, J.B., 1897 Old Samoa; or Flotsam and Jetsam from the Pacific Ocean. Religious Tract Society, London.
Brief account of a visit to Sevaio Cave, Upolu Island.
- STEWART, L., 1974 Caving in Western Samoa. New Zealand Speleol. Bull. 5(90): 305-309.
Visit Falemaunga Caves and Piuk Cave, Upolu Island.
- *Three of the papers have not been sighted and may refer to American Samoa (U.S.A.).

WALLIS AND FUTUNA (FRANCE)

- BISSELL, H.S., 1931 Cruising with the Wanderlusts: 173-174. Saturday Night Publ., Los Angeles. Reprinted as Caves of the South Pacific. Speleo 9(2/3), 10(1): 9-11. (South West Essex Tech. College Caving Club.)
Caves visited on Alopi Island, Wallis Islands.
- SHUTLER, M.E. and SHUTLER, R., 1968 A preliminary report of archaeological explorations in the southern New Hebrides. Asian Perspectives 9: 157-166.
19 rock shelters recorded, Futuna Island.

ACKNOWLEDGEMENTS

Many people have helped in an extended project such as this and I thank them all. I am especially indebted to cavers who have provided references, particularly Ray Mansfield (England) who gave access to his worldwide collection of references. Others who exchanged material include Chris Ballard (Canberra), John Dunkley (Canberra), Ross Ellis (Sydney), Daniel Gebauer (Germany), the late Joe Jennings (Canberra), Andrew Pavey (Sydney), and John Weir (Sydney). Staff of the libraries of the following universities have been most helpful: University of Papua New Guinea, University of Queensland, and Australian National University.

Address for correspondence: Department of Human Geography, R.S.Pac.S., Australian National University, G.P.O. Box 4, Canberra, A.C.T. 2601.

OBSERVATIONS ON THE BUCHAN KARST DURING HIGH FLOW CONDITIONS.

Brian Finlayson and Mark Ellaway

Abstract

In late July 1984 heavy rain at Buchan in East Gippsland produced widespread flooding and activated the dry valley network and vadose cave system on the Buchan limestones. The heavy rainfall was caused by the movement southwards along the New South Wales coast of a low pressure centre which originated in southeast Queensland. Intensity - frequency - duration analysis of the rainfall event indicates that while the 24 hour fall on the day the flooding occurred had a recurrence interval of only 1.75 years, the 96 hour and the 120 hour durations had recurrence intervals of 3.8 and 8.0 years respectively. The flood peak in the Buchan River had a recurrence interval of 4.3 years. These analyses indicate that the dry valleys and vadose cave systems are hydrologically active quite frequently under present climatic conditions. Water quality observations were made on surface streams and springs in the Buchan area during the flood and the results are compared with similar data collected under low flow conditions.

INTRODUCTION

In any river system, the length of actively flowing channel is a function of moisture conditions in the catchment such that during and immediately following heavy rain the whole of the channel net becomes active while during dry periods the system contracts, the lower order streams ceasing to flow first (see for example, Blyth and Rodda, 1973). In karst areas this pattern of behaviour is complicated by the progressive development of subsurface flow routes so that through time, more and more of the flow occurs underground and the surface valley systems are gradually abandoned (Jennings, 1985). On impervious rocks the frequency of activation of the channel network is a function of climate. The same climatic effects apply to karst areas but the behaviour of the surface channels are also determined by the level of development of the subsurface flow network in fissures and caves. While individual instances of "dry valleys" in karst areas carrying flow have been reported in the literature (Hanwell and Newson, 1970; Trudgill, 1985) few attempts have been made to assess the frequency with which these surface systems become active.

The area of karst barré at Buchan in East Gippsland (Figure 1) has a typical surface network of dry valleys. Small streams which flow from the surrounding impervious Snowy River Volcanics normally sink underground on reaching the limestones (e.g. Spring Creek and Back Creek, Figure 1), though the Buchan River itself maintains its flow in an alluvial channel across the limestone except during periods of extreme low flow. It is not known whether the subsurface system in the limestone is saturated to the level of the Buchan River (the lowest point in the landscape) or whether the Buchan channel is effectively sealed, though the former appears the more likely. The Murrindal River is similar, though under low flow conditions it sinks for a distance of approximately 1 km near the Pyramids (site 21 on Figure 1).

During a period of very heavy rainfall on the weekend of 28-29th July, 1984, the surface valleys at Buchan became active. This provided an opportunity to assess the relative frequency of such events and also enabled water quality measurements to be made under high flow conditions. In this paper the meteorological situation which caused the flooding is briefly described together with qualitative observations of runoff behaviour on the surface and in those parts of the cave systems to which access was possible. The only quantitative hydrological data available for this area are runoff records on the Buchan and Murrindal Rivers and daily rainfall observations at Buchan Post Office. No flow measurements are made on any of the surface tributaries, cave streams or springs in the area. The available records have been analysed in an attempt to characterise the flood of July 1984 in terms of relative magnitude and recurrence interval. For these purposes only the Buchan Post Office rainfall and Buchan River streamflow data are used. The record on the Murrindal River dates only from March 1976 and so is too short for reliable recurrence interval analysis. Water quality measurements are presented for a number of sites in the area and compared with similar data collected at intervals over a three year period during which no similar floods occurred.

Descriptions of the geology and climate of the Buchan area were presented by Ellaway and Finlayson (1984) and will not be repeated here. The same sample sites were used in this study as in the previous study except that some of the sites were inaccessible during the flood period and other sites (e.g. Fairy Creek and Wilsons Cave) had not previously been observed to carry any flow. Sampling sites are shown on Figure 1 and descriptions of them are given in Table I. The methods of sample collection and analysis described in the earlier paper were also used in this study.

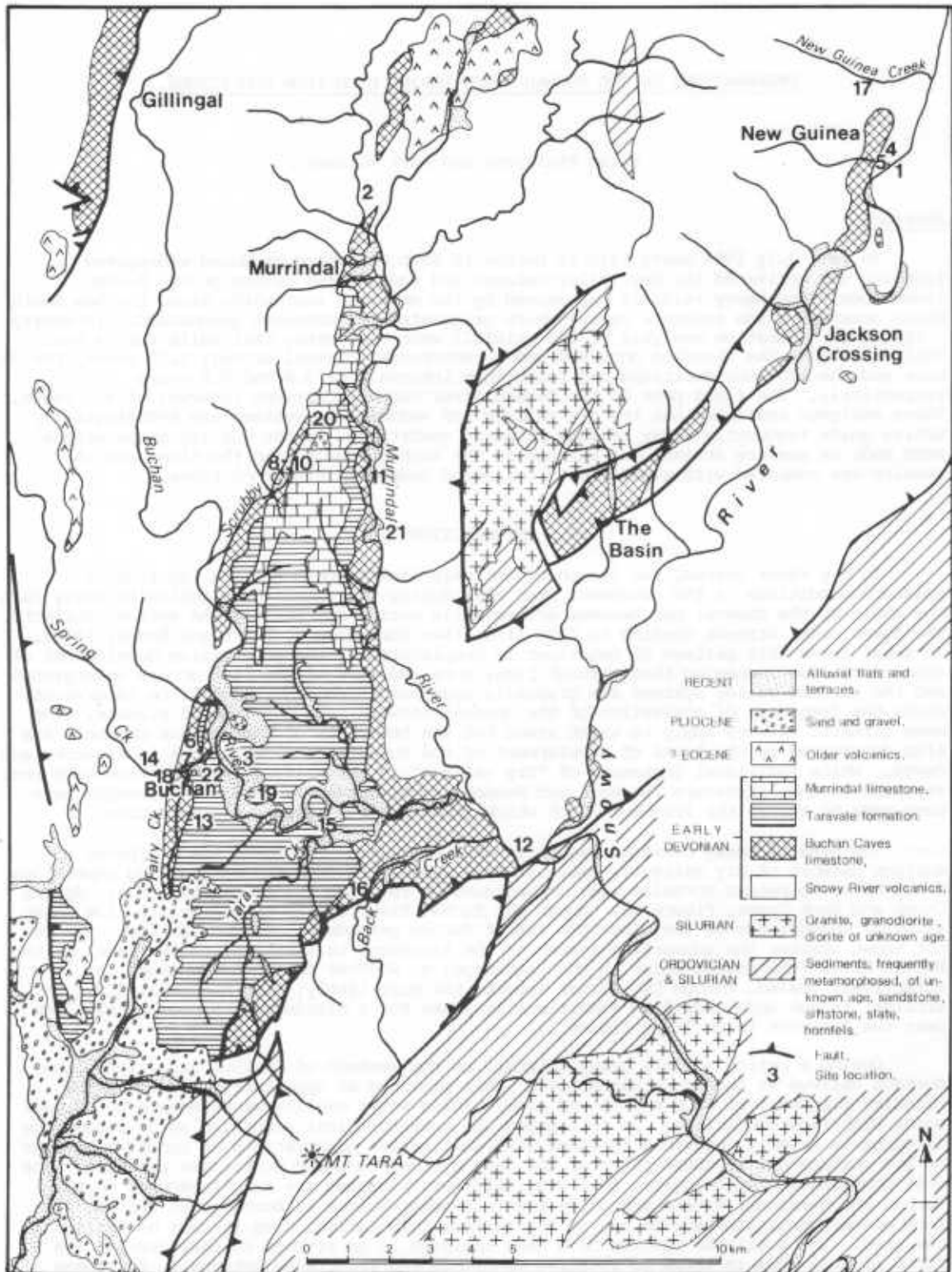


Figure 1. Geology of the Buchan area showing sample sites. (After Teichert and Talent, 1958).

METEOROLOGICAL AND HYDROLOGICAL CHARACTERISTICS OF THE FLOOD

For the six months (January to June) prior to the flood of July 28-29th 1984, the raingauge at Buchan Post Office recorded rainfall close to, but slightly below, the long term average for these months (354 mm as compared with 398 mm). January and February

recorded monthly totals slightly above average and rainfall was below average from March to June. In July, for the 27 days prior to the flood producing rains of the 28th and 29th, 106.6 mm were recorded which is 62.2 mm above the long term average for that month. Daily falls for the 5 days preceding the flood were 1.4, 11.2, 30.4, 2.0 and 0.0 mm respectively. Thus the rains which began on Friday 27th July fell onto an already wet catchment. (Note that daily rainfalls refer to readings made at 9.00 a.m. on the date given.)

In the early morning of Friday 27th July a weak low pressure centre was situated over southeast Queensland within a trough of low pressure extending down the east coast of Australia. The low moved south along the New South Wales coast during the day generating onshore southeast winds over coastal southern New South Wales and eastern Victoria. By late Friday night the low had deepened to 994 mb and begun to move offshore. It continued to deepen during Saturday 28th, the central pressure dropped to 984 mb, and it moved slowly southwards maintaining a moist, unstable south easterly airflow into eastern Victoria. Figure 2 shows the synoptic situation on the morning of Sunday 29th July when very heavy rain was falling at Buchan. The low then moved away to the southeast and ultimately weakened to become a trough of low pressure to the south of New Zealand by the morning of Tuesday 31st July. Buchan Post Office recorded 58.4 mm at 9.00 a.m. on Saturday 28th and 52.0 mm on Sunday 29th. Only 4.0 mm were recorded on Monday.

The effects of this rainfall in generating runoff in the Buchan area were quite dramatic. Most of the dry valleys on the Buchan limestones carried surface streams and surface runoff on the hillslopes was widespread. Much of this flow entered the vadose flow system of the limestones. Caves which had previously been reported to carry flow only rarely were observed to be flowing. Wilsons Cave (EB - 4), a vadose stream passage (normally dry), had a stream flowing through it and this was typical of many other similar caves. Discharge from the karst springs of the Buchan area, with one exception, rose rapidly and the flow issuing from them was highly turbid, indicating that they were connected to rapid vadose flow routes carrying surface runoff. The one exception was Bitch of a Ditch (EB - 49, site 12 on Figure 1) where the flow rate was little affected and the water remained clear. Mabel's Cave (EB - 1), normally a dry cave, carried a strong flow of highly turbid water.

Spring Creek, which flows through the Buchan Caves Reserve, has two major tributaries, Spring Creek itself which has most of its catchment on the Snowy River Volcanics, and Fairy Creek with a catchment on Buchan Caves Limestones and Taravale Formation (Figure 1) and which is normally dry. Both branches flooded, part of Fairy Creek flow entered the lower entrance to Whale Cave (B - 20), and the combined streams flooded the Buchan Caves Reserve and closed off vehicle access for five hours. Both tourist caves, Fairy Cave and Royal Cave, were closed by flood waters. Highly turbid flow was also observed in the lower levels of Federal Cave (B - 7), an old tourist cave, which connects via a sump to Dukes Rising (B - 4, site 7 in Figure 1).

The Buchan River flooded, reaching its peak on the night of Saturday 28th, with a maximum instantaneous discharge of 19,292 ML/day, a gauge height of 3.822 m. The Murrindal River also flooded, the W-Tree Falls, located on the Snowy River Volcanics just north of the limestone (near site 2 on Figure 1) providing a spectacular display. Maximum instantaneous flow of the Murrindal River was 32,700 ML/day at the gauge in East Buchan, a gauge height of 5.704 m.

RECURRENCE ANALYSIS OF THE EVENT

There is virtually no observational data available for the Buchan limestones on the frequency with which such runoff events occur in the caves and dry valleys. The one exception to this is the flood of June 1978 for which some general observations on flooding in the Buchan Caves Reserve are available. In the absence of such data it is possible to make recurrence estimates using the rainfall record and the runoff record for the Buchan River. Both these methods have limited applicability. Runoff is not a simple function of rainfall as this depends on antecedent wetness of the catchment and storm characteristics such as duration, intensity and path. Previous rainfalls of the same amount as in July 1984 would not necessarily have produced similar runoff conditions. The Buchan limestones occupy a small part of the downstream end of the Buchan catchment area and its flood behaviour is governed mainly by conditions upstream. Flood conditions in the Buchan River do not necessarily indicate local flooding on the limestones. In the absence of other data, an analysis of recurrence is presented here based on the rainfall and runoff record.

The rainfall record can be used to investigate the possibility that the extent of local runoff was due to an extreme precipitation event. The available data are limited in this regard since only daily rainfall totals are recorded though our experience of the event suggests that the rainfall was reasonably well spread across the two days and not unduly concentrated into a shorter period. An advantage of this approach is that reliable records have been kept at Buchan Post Office since August 1883 with very few missing data.

Daily rainfall totals for the period of record were supplied on magnetic tape by the Bureau of Meteorology in Melbourne and processed on the University of Melbourne's Cyber 730 computer. In each year of record the maximum 24, 48, 72, 96 and 120 hour duration falls were determined and assembled in rank order. For each duration the ranked rainfall

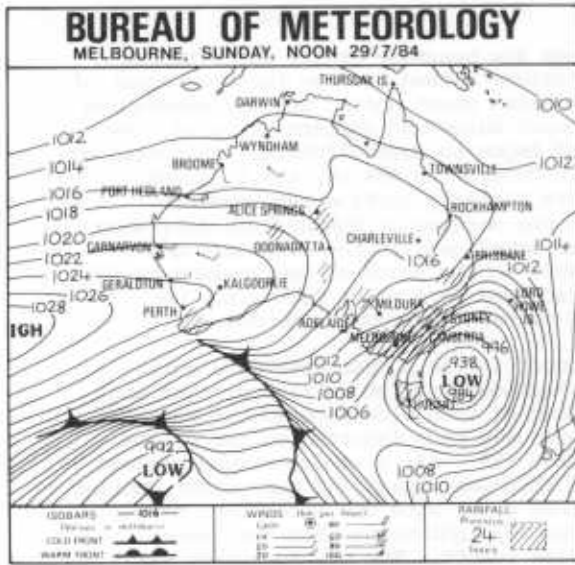


Figure 2. Synoptic chart for noon, Sunday 29th July, 1984. (Source: "The Age", Melbourne, 30th July, 1984).

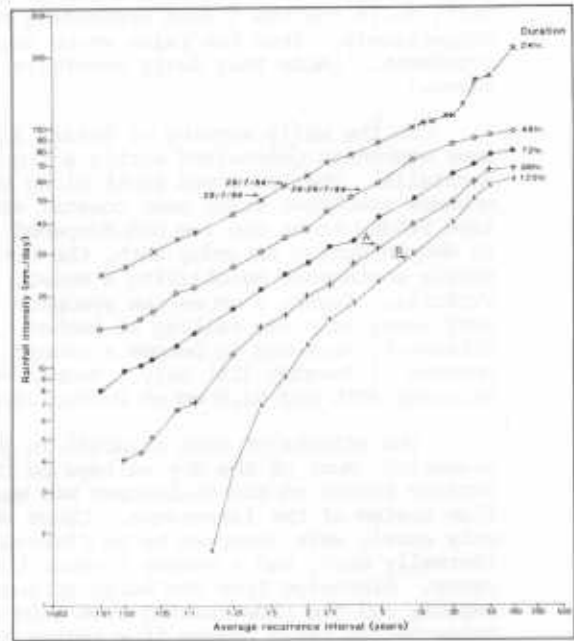


Figure 3. Annual exceedence series for rainfalls of 24, 48, 72, 96, and 120 hr durations at Buchan.

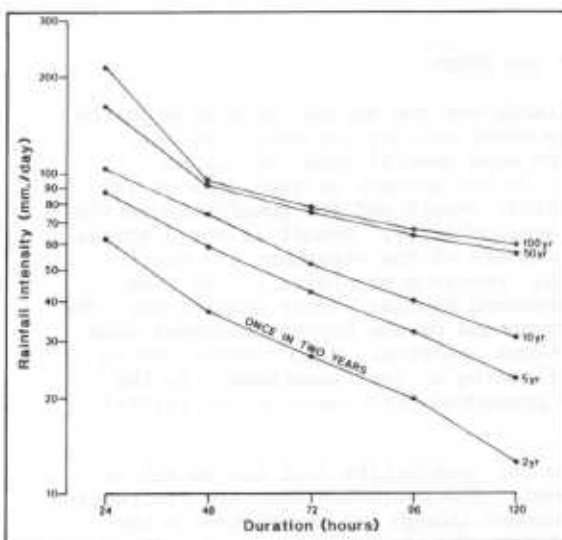


Figure 4. Rainfall intensity-frequency-duration curves for Buchan.

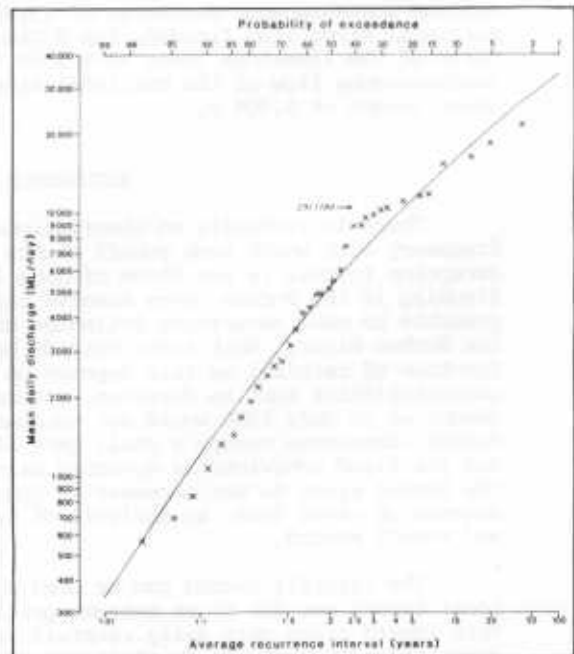


Figure 5. Flood frequency curve for the annual exceedence series, Buchan River at Buchan (Station no. 223207).

set is an annual series which can be plotted on intensity and probability axes. Probability of exceedence (P_i) is calculated from the ranks (i) as:

$$P_i = \frac{i}{N+1}$$

and the average recurrence interval (T_i) is the reciprocal of P_i (Institution of Engineers, 1977). The annual exceedance series for each of the five durations are plotted on log - probability paper in Figure 3 where the probability axis has been rescaled as average recurrence interval. For durations up to 96 hrs the data are log-normally distributed while the 120 hrs duration is markedly skewed. Figure 4, a conventional intensity - frequency - duration diagram has been derived from Figure 3. The 24 hr falls on the 28th and 29th July have average recurrence intervals of 1.75 and 1.5 years respectively. The 48 hr duration for those two days has an average recurrence interval of 4 years. These dates are marked on Figure 3. Extension to longer durations is not strictly justified since there was no rain recorded on the 27th. However, ignoring this fact and using rainfall on the 25th and 26th to give 96 hr and 120 hr durations (points marked A and B on Figure 3) gives recurrence intervals of 3.8 and 8.0 years respectively.

The rainfall analysis indicates that the two days of rain which produced the flood event were not particularly unusual. The 120 hr duration was less common and indicates that antecedent wetness of the catchment was an important contributing factor to the magnitude of local runoff on the limestone area around Buchan. As was mentioned earlier, even excluding the rain on the 28th and the 29th July, rainfall was significantly above average for the month. It should also be noted that in July evaporation and transpiration rates are low and this also plays an important role in determining antecedent wetness.

Runoff is the outcome of the integration of catchment and rainfall conditions and so represents a better way of looking at the magnitude and frequency of the event. In this case however, there are no runoff records which reflect conditions in the immediate vicinity of Buchan only, because of the large proportion of the catchment which lies on non-carbonate rocks and would be expected to dominate flood behaviour in the Buchan River. Discharge records for the Buchan River at Buchan (station no. 222206) were made by the State Electricity Commission between 1926 and 1930 using a daily read staff gauge. No records were kept between 1930 and 1947 when the State Rivers and Water Supply Commission (now Rural Water Commission) recommenced daily staff readings which were continued until 1964 when a recorder was installed. Ideally, an analysis of flood behaviour should be based on the annual series of maximum instantaneous discharges (c.f. the rainfall analysis described above). Such data are only available for the period since 1964. Prior to 1964, because the record is based on daily staff readings, only maximum mean daily discharges are available. In order to utilize the whole record period the analysis has been carried out using the annual exceedance series of mean daily maximum flows.

To test the reliability of the mean daily maximum series as compared to the maximum instantaneous series, these two series were compared for the 19 years of record (since 1966) for which both are available, using correlation analysis. The correlation coefficient is 0.95 (significant at the 99% level). With only one exception, 1982, the month of occurrence of the maximum instantaneous flow is the same as the maximum mean daily flow.

The annual exceedance series of mean daily maximum flows has been compiled and plotted on log-probability paper (see Figure 5) in the same way as the annual series of rainfall maxima described earlier. While the absolute values of discharge are lower than the instantaneous flows, the order and therefore the probabilities, are the same. The flood of 28th July is the largest for 1984 and its position in the series is shown on Figure 5. The fitted line in Figure 5 is a log Pearson Type III distribution with mean, standard deviation and skewness of the Buchan data (Institution of Engineers, 1977). The position of the flood of 28th July 1984 is shown in Figure 5 and has an average recurrence interval of 4.3 years.

On the basis of these estimates, the event under consideration has an average recurrence interval of between 4.0 and 8.0 years and therefore appears not to be particularly rare. On this basis it would appear that the dry valleys on the Buchan limestones and the vadose cave systems are active much more frequently than has previously been assumed, even if the 1984 event is taken to represent the minimum conditions for flow in these systems. Such an assumption is not really justified so it must be assumed that the dry valleys and caves are hydrologically active quite frequently under present climatic conditions.

WATER QUALITY OBSERVATIONS

The location of each sampling site is shown on Figure 1 and a brief description given in Table 1. In Table II the results of analyses of the flood samples from July 1984 are given together with the range observed on other occasions (where applicable). A selection of the results are plotted as time series together with monthly rainfalls in Figure 6. The results presented are the measured values of Ca^{++} , total hardness and temperature together with saturation indices for calcite (SI_c) and the partial pressure of carbon dioxide (PCO_2) as calculated by WATSPEC (Wigley, 1977). The surface stream sites e.g. site 1 on Figure 6 (Table II) are representative of flow from the Snowy River Volcanics. During the flood of July 1984 they all had low values of Ca^{++} and total hardness, water temperatures were either the same as that of the

rainfall (9°C) or elevated by only 1°C as in the case of the Murrindal River and all were slightly cooler than the spring waters and were markedly undersaturated with respect to calcite.

TABLE I. SITE DESCRIPTIONS

| Site number | Description |
|-------------|--|
| 2 | Murrindal river, upstream of limestone-volcanics contact. |
| 3 | Buchan River, at bridge in town. |
| 5 | Spring at New Guinea Ridge, receives water draining from volcanics, NG-2. |
| 6 | Spring at Moons Cave in Buchan Caves Reserve, probably receives water draining from the volcanics, B-54E. |
| 7 | Spring at Dukes Cave in the Buchan Caves Reserve, receives water draining from Buchan Caves Limestone and Taravale Formation, B-4. |
| 9 | Spring at top of extensive tufa terraces on Scrubby Creek, outflow of M-49. |
| 11 | Spring at outflow of M-4. |
| 12 | Spring at Bitch of a Ditch, EB-49. |
| 13 | Cave stream in B-67, linked by dye tracing to spring at Dukes. |
| 14 | Spring Creek, intermittent surface stream Buchan Caves Reserve; low flows sink at limestone-volcanics contact. |
| 16 | Back Creek, intermittent surface stream near Site 12. |
| 18 | Fairy Creek, surface stream in Buchan Caves Reserve that rarely flows. |
| 19 | Wilson's Cave, usually dry vadose stream cave, EB-4. |
| 20 | Stormwater Tunnel, cave near end of blind valley, M-43. |
| 22 | Surface runoff, water sample collected of runoff on Taravale Formation. |

Cave numbers are taken from Mathews (1985).

Among the spring sites (which includes the cave stream B - 67) Bitch of a Ditch is unusual. Although all measured values for this site were near the lower ends of their previous recorded ranges, they showed much less response to the flood conditions than the other sites. Bitch of a Ditch alone retained a positive SI value and the water remained clear throughout the flood period. The rest of the springs were dramatically affected by the flood. In each case there was a rapid increase in discharge and the flow became highly turbid, suggesting rapid conduit connections with the surface flow systems. Jennings (1985) has suggested that this type of behaviour in karst springs may be characteristic of areas with unreliable rainfall coupled with a liability to high rainfall intensities. Despite this, temperatures remained higher than the surface streams by 2°C to 4°C and the Ca²⁺ and total hardness values were also considerably higher. This is probably due to some combination of three processes: mixing of surface water with baseflow water already in the system; modification of the surface water after entering the conduits by transfer of sensible heat from the rock; and "shunting" of older water from the fissures and conduits. Absence of flow data make it difficult to explore these issues further. Moons Cave (B - 54E) flow was closer in concentration to the surface streams than the other springs and this is consistent with its longer term behaviour (see Figure 6). It is more variable than the other springs suggesting more frequent and direct inputs from rapid conduit flow systems, possibly from the Buchan River. Water temperatures at the spring sites show a general relationship to the decrease in total hardness at the time of the flood in July 1984. The higher the ratio of mean total hardness to flood total hardness, the lower the water temperature (Table III). This reflects the varying input of direct surface runoff to spring flow. The surface runoff has a water temperature similar to that of the rainfall (9°C) and low total hardness (Table I). Where hardness values during the flood are similar to the mean value (e.g. Bitch of a Ditch), the water temperature is close to the groundwater value and lower temperatures are associated with lower total hardness when expressed in proportion to means for each site.

The quickflow sites on the limestone (Table II) are generally intermediate between the spring sites and the surface stream sites and were probably receiving flow by both surface and shallow subsurface routes. Certainly Stormwater Tunnel (M - 43) has been observed carrying flow at other times when most of the surface net was not active and the water quality was similar to the nearby spring at Scrubby Creek (M - 49). This observation is also supported by the water temperatures.

CONCLUSIONS

The intense rainfall which produced flooding in the Buchan Caves area in July 1984 was produced by the southward penetration of a low pressure system from the tropical east coast of Australia. Such southerly incursions of tropical lows which bring warm unstable Pacific maritime air onto the highlands of East Gippsland are frequent causes of heavy rainfall there (Linforth, 1969; Gentilli, 1971). Analysis of both the rainfall and streamflow data indicates that the event of July 1984 was not particularly uncommon and had an average recurrence interval no greater than 8 years and probably less.

The surface dry valley network in the Buchan limestone area became active in this event as did the shallow vadose cave systems. The available data does not permit an assessment of the extent to which these systems are still active in the geomorphological sense though the relative frequency of occurrence tends to indicate that they are still undergoing active modification under the present climatic regime. The springs in the

TABLE II. RESULTS OF CHEMICAL ANALYSES

| Site No. | Ca ⁺⁺ (mg/l) | Total Hardness (mg/l as CaCO ₃) | Water Temperature (°C) | Si _c | log(PCO ₂) |
|---|----------------------------|--|---------------------------|--------------------------|--------------------------|
| <u>Surface Stream Site</u> | | | | | |
| 2) Murrindal River n = 8 July, 1984 | 16.2 - 54.7 3.9 | 73.4 - 204.5 15.4 | 10.0 - 31.0 10.0 | -1.07 - 0.90 -2.22 | -2.80 - (-2.40) -2.98 |
| 3) Buchan River n = 9 July, 1984 | 2.6 - 70.1 2.9 | 12.6 - 235.5 14.2 | 10.0 - 21.5 9.0 | -2.24 - 0.90 -2.27 | -3.25 - (-2.10) -3.01 |
| 14) Spring Creek n = 7 July, 1984 | 3.0 - 91.2 4.7 | 21.8 - 350.8 20.3 | 9.0 - 19.0 9.0 | -2.26 - (-0.07) -2.01 | -3.23 - (-1.55) -2.39 |
| 16) Back Creek n = 4 July, 1984 | 26.2 - 68.4 3.9 | 123.0 - 318.6 14.9 | 11.0 - 17.0 9.0 | -1.13 - 0.23 -2.28 | -2.08 - (-1.44) -2.88 |
| <u>Quick Flow Sites</u> | | | | | |
| 18) Fairy Creek n = 1 July, 1984 | 15.6 5.9 | 60.3 25.8 | 13.0 11.0 | -0.93 -1.82 | -2.88 -2.91 |
| 19) Wilsons Cave, July 1984 | 6.7 | 27.0 | 10.0 | -1.55 | -3.10 |
| 20) Stormwater Tunnel n = 3 July, 1984 | 79.3 - 94.1 18.3 | 217.8 - 350.8 48.8 | 9.0 - 19.0 9.0 | 0.17 - 0.82 -1.31 | -2.69 - (-1.93) -2.39 |
| 22) Surface Runoff, July 1984 | 23.0 | 59.6 | 9.0 | -1.09 | -2.14 |
| <u>Spring Sites</u> | | | | | |
| 5) NG - 2 n = 8 no July 1984 sample | 14.0 - 73.5 - | 44.9 - 237.4 - | 12.0 - 15.0 - | -1.68 - 0.05 - | -3.04 - (-1.79) - |
| 6) Moons n = 9 July, 1984 | 24.9 - 90.7 11.9 | 107.1 - 291.1 41.8 | 12.0 - 16.0 12.0 | -1.21 - 0.64 -1.32 | -2.39 - (-1.87) -2.68 |
| 7) Dukes n = 11 July, 1984 | 64.5 - 178.3 60.5 | 206.0 - 594.2 199.7 | 15.0 - 18.0 13.0 | -0.29 - 0.34 -0.05 | -1.99 - (-1.05) -2.14 |
| 9) Scrubby Creek 2 n = 10 July, 1984 | 48.7 - 124.5 27.0 | 133.9 - 343.8 72.0 | 14.0 - 17.0 11.5 | -0.64 - 0.73 -0.96 | -2.38 - (-1.54) -2.28 |
| 11) M - 4 n = 8 July, 1984 | 54.3 - 109.4 35.8 | 160.3 - 334.1 100.5 | 13.2 - 17.0 11.5 | -0.47 - 1.07 -0.88 | -2.78 - (-1.75) -2.12 |
| 12) Bitch of a Ditch n = 9 July, 1984 | 99.6 - 126.7 103.5 | 341.7 - 470.0 326.3 | 16.5 - 18.0 16.0 | 0.16 - 1.09 0.04 | -2.34 - (-1.37) -1.60 |
| 13) B - 67 n = 9 July, 1984 | 114.8 - 188.6 42.2 | 393.3 - 644.7 133.4 | 16.0 - 19.0 12.0 | -0.01 - 0.38 -0.69 | -1.71 - (-1.25) -2.06 |
| Rainwater (av. 4 samples) | 0.65 | 1.99 | 9.0 | N.A. | N.A. |

N.A. = not analysed. n = number of samples.

TABLE III. COMPARISON OF TOTAL HARDNESS RATIOS AND WATER TEMPERATURES.

| Site | Ratio of mean total hardness to total hardness in July 1984 | Water temperature (°C) |
|------------------|--|---------------------------|
| Bitch of a ditch | 1.3 | 16.0 |
| Dukes | 2.1 | 13.0 |
| M-4 | 2.6 | 11.5 |
| Scrubby Creek 2 | 3.4 | 11.5 |
| B-67 | 4.1 | 12.0 |
| Moons | 4.4 | 12.0 |

Buchan area are known to be connected to diffuse flow systems in the limestone with large storage volumes since flow persists even during drought periods (Ellaway and Finlayson, 1984). Most of these springs are also connected to rapid flow vadose networks (the exception being Bitch of a Ditch) and experience varying contributions of surface and vadose flow to their total flow during flood events. It is also noteworthy that the effects of the flood of July 1984 on water quality in the Buchan area persisted for some months after (Figure 2). Jennings (1972a; 1972b) has drawn attention to the problem of high variability of rainfall and runoff at Coleman Plains and its effect on karst water quality. This variability problem, probably unique to Australian climatic environment (McMahon, 1982), and its implications for karst water sampling will be discussed in more detail elsewhere.

While there appears to be no other data available with which to compare the recurrence interval analysis carried out here, the dry valley network and the shallow vadose cave systems appear to be active more frequently than might have been expected of a well developed karst system. Three factors may contribute to this in the Buchan area. Sweeting (1960) considered that the cave systems at Buchan were very young and if this is so then the short recurrence intervals for surface flow may be due to lack of development

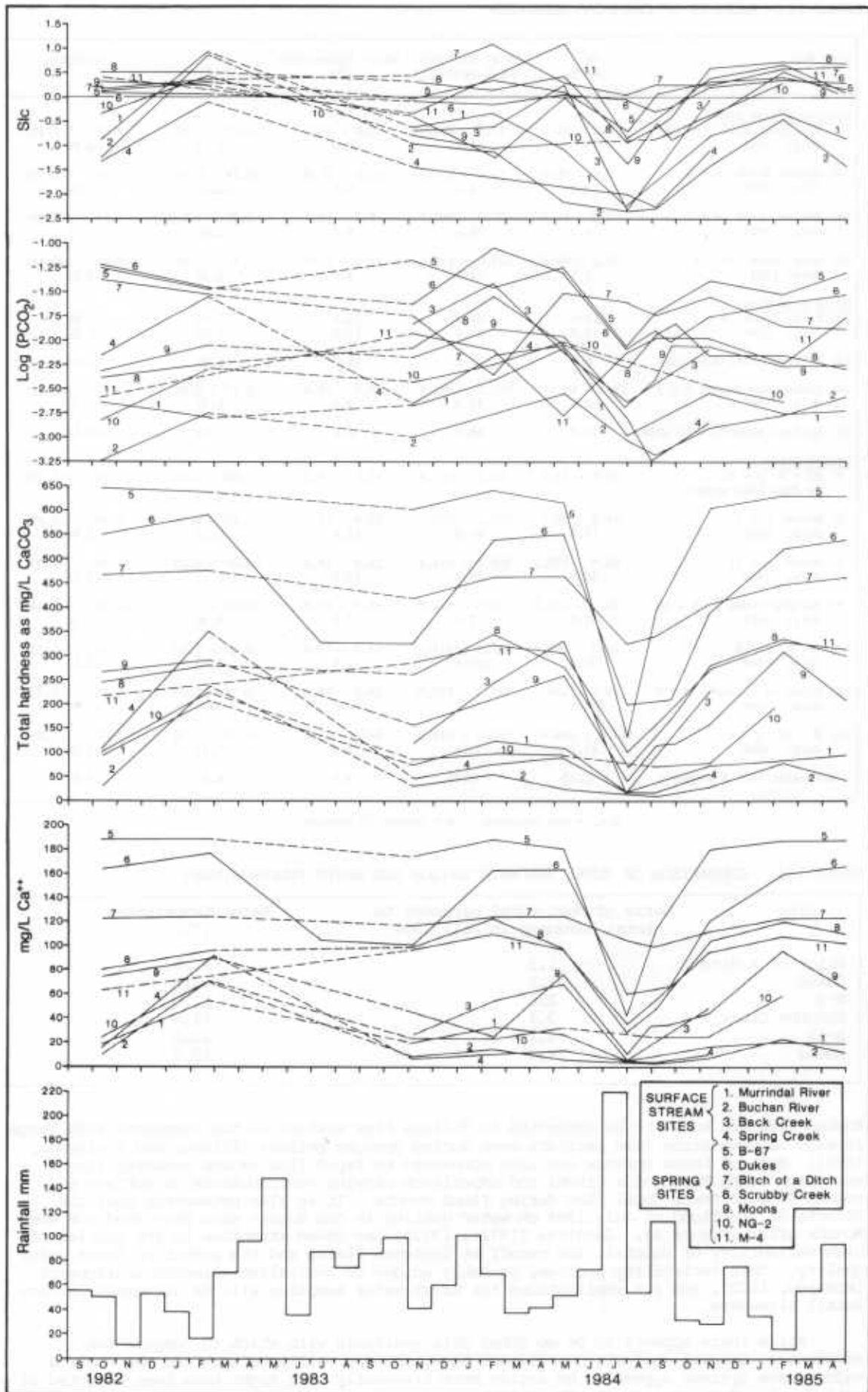


Figure 6. Time series plots of water quality observations in the Buchan area and monthly rainfalls for the period September 1982 to April 1985.

of the underground drainage. While no ages have yet been determined for caves in the Buchan area, and this is obviously an issue which could be explored further, general observations in the caves indicate a complex history of alternating phases of sediment accumulation and removal and the deposition and re-solution of speleothems which suggests that the caves may be relatively old. The Buchan limestones are unusual in that over much of the surface area the outcrop is mudstone of the Taravale Formation and not true limestone. This may affect the relative frequency with which surface runoff occurs. The fact that the Buchan area is a karst barré, or impounded karst (Jennings, 1985), rather than free karst may increase the frequency of surface runoff due to contributions of flow from the surrounding impervious Snowy River Volcanics.

REFERENCES

- BLYTH, K. and RODDA, J.C., 1973 A stream length study. Water Resources Res., 9: 1454-1461.
- ELLAWAY, M. and FINLAYSON, B., 1984 A preliminary survey of water chemistry in the limestones of the Buchan area under low flow conditions. Helictite, 22: 11-20.
- GENTILLI, J., 1971 Climates of Australia. In: H.E. LANDSBERG (ed), World Survey of Climatology Vol. 13: 35-211. Elsevier, Amsterdam.
- HANWELL, J.D. and NEWSON, M.D., 1970 The great storms and floods of July 1968 on Mendip. Wessex Cave Club Occ. Pub. 1. 72pp.
- INSTITUTION OF ENGINEERS, 1977 Australian Rainfall and Runoff: Flood Analysis and Design, The Institution of Engineers, Australia.
- JENNINGS, J.N., 1972a The Blue Waterholes, Cooleman Plain, N.S.W. and the problem of karst denudation rate determination. Trans. Cave Res. Gp. Gt. Br. 14: 109-117.
- JENNINGS, J.N., 1972b Observations at the Blue Waterholes, March 1965 - April 1969, and limestone solution on Cooleman Plain, N.S.W. Helictite 10: 3-46.
- JENNINGS, J.N., 1985 Karst Geomorphology, 2nd. ed., Blackwell, Oxford. Pp 293.
- LINFORTH, D.J., 1969 The climate of East Gippsland. Proc. R. Soc. Victoria 82: 27-36.
- MATTHEWS, P.G., 1985 Australian Karst Index 1985. Australian Speleological Federation, Melbourne.
- McMAHON, T.A., 1982 World hydrology: does Australia fit? Inst. Eng. Aust. Nat. Conf. Pub. 82/3: 1-7
- SWEETING, M.M., 1960 The caves of the Buchan area Victoria, Australia. Z. Geomorph., Suppl. Bd. 2: 81-91.
- TEICHART, C. and TALENT, J.A., 1958 Geology of the Buchan area, East Gippsland. Geol. Surv. Vic. Mem. 21, 56pp.
- TRUDGILL, S.T., 1985 Limestone Geomorphology. Longman, New York. Pp 196.
- WIGLEY, T.M.L., 1977 WATSPEC: A computer program for determining the equilibrium speciation of aqueous solutions. Brit. Geomorphol. Res. Grp. Tech. Bull. 20, 40pp.

Address for correspondence: Department of Geography, University of Melbourne, Parkville, Vic. 3052.

DEPOSITION OF TUFA ON RYANS AND STOCKYARD CREEKS,
CHILLAGOE KARST, NORTH QUEENSLAND: THE ROLE OF EVAPORATION

D.L. Dunkerley

Abstract

A spring which feeds Ryans and Stockyard Creeks west of Chillagoe, north Queensland, was examined in order to understand the circumstances producing extensive deposits of tufa in the stream channels. The spring water was found to be of considerable hardness (300 ppm total carbonates) and to emerge only very slightly supersaturated with respect to calcium carbonate, but undersaturated with respect to dolomite. Both saturation levels rose very rapidly during the first 150 m of subaerial flow, as did pH and water temperature. In contrast to the reported behaviour of other limestone springs, carbonate hardness at this site does not decrease monotonically downstream, but rather locally undergoes significant increases. In particular, magnesium hardness at 1 km downstream is more than 4 times its value at the spring. These phenomena are explained in terms of evaporative concentration of the dissolved carbonates and in terms of possible chemical changes associated with the mixing of waters having contrasting characteristics at channel and pool sites along the streams.

INTRODUCTION

This study was undertaken in order to document the downstream chemical changes undergone by spring waters in a seasonally arid karst area of northern Australia. The spring is located on Ryans Creek in the central Chillagoe karst of north Queensland (see Figure 1). Extensive deposit of tufa (of secondary calcium carbonate laid down from the stream waters) occur along both Ryans and Stockyard Creeks below the spring. The deposits occur both as tufa dams (impounding in some cases very large, deep pools) and as diffuse encrustations in the sandy or rocky channel beds.

The deposition of secondary carbonates such as tufa involves a complex series of physico-chemical processes, not yet thoroughly understood. It is known that a degree of supersaturation is required in the depositing water body before the process of nucleation, in which minute crystal nuclei are formed, can take place (Walton 1967). For concentrations of dissolved carbonates lying between the equilibrium value and the minimum supersaturation level required for nucleation, the solution is in a metastable condition (Nancollas & Reddy 1976) and can remain in this state for considerable periods. For concentrations above the level required for nucleation or precipitation onto pre-existing crystals, the rate of deposition increases (all else being constant) as the degree of supersaturation increases.

In the closed-system environment of the permeable carbonate bedrock through which spring waters move, equilibrium conditions are progressively approached as limestone is taken into solution. If the residence time of the water in the subsurface zone is sufficiently long, the waters may emerge in a condition close to equilibrium. The altered conditions encountered upon emergence may then drive the solution into the region of supersaturation and initiate the deposition of tufa.

In a previous study (Dunkerley 1981) it was shown that tufa deposition along the stream below a tropical spring at Mt Etna near Rockhampton was driven largely by the degassing of carbon dioxide from the spring waters as they approached equilibrium with the atmosphere. The spring on Ryans creek studied in the present work is located in a substantially less humid area, where evaporation could be expected to play a role in concentrating the dissolved carbonates and in so doing force the water into the supersaturated state from which tufa deposition is possible. One aim of the present investigation was to document the role of evaporation in the production of tufa deposits below the Ryans Creek spring.

THE SPRING AND THE CHILLAGOE KARST

The spring lies in the central part of the Chillagoe karst area in northern Queensland. It apparently flows throughout the year, fed by slow diffuse movement of water through the bedrock, which is upper Silurian - lower Devonian reef limestone, in places contact-metamorphosed to marble by the intrusion of granite bodies during the Devonian (De Keyser & Wolff 1964).

Soils on the limestone are generally thin where present and bedrock crops out in many places. The water feeding springs in the karst presumably enters the bedrock over a substantial contributing area and moves down local hydrostatic gradients within the bedrock to the points of emergence in low-lying stream channels. Catchment boundaries for particular springs have not yet been identified.

The area experiences seasonal aridity, with the bulk of the 800 mm of rainfall received annually being delivered in the monsoon season from December to March (Dunkerley 1983). The vegetation consequently is open woodland with a ground cover of native grasses. A few permanent watercourses, including Stockyard Creek and Chillagoe Creek (which is also fed by springs) are associated with very localised communities of taller trees and shrubs, *Melaleuca* spp. being noteworthy.

During the dry season, Ryans Creek begins at the rising in an area of extensive grass and moss-rimmed pools. Downstream, tufa deposition has created a multitude of pools and cascades which combine to form a large body of fresh water. At the time the observations reported here were made (January 1983) the stream persisted for about 1.5 km before sinking entirely into sandy alluvium forming the bed of the channel. Below this point, isolated pools were present, which may have been connected by seepage through the alluvium. January 1983 was an atypical wet season month, with very little rainfall, and the creek remained in its dry season condition; the flow was estimated to be of the order of 100 litres per minute. During the wet season, accessions of surface runoff from the less permeable rocks in the headwater regions would undoubtedly alter both its appearance and chemistry.

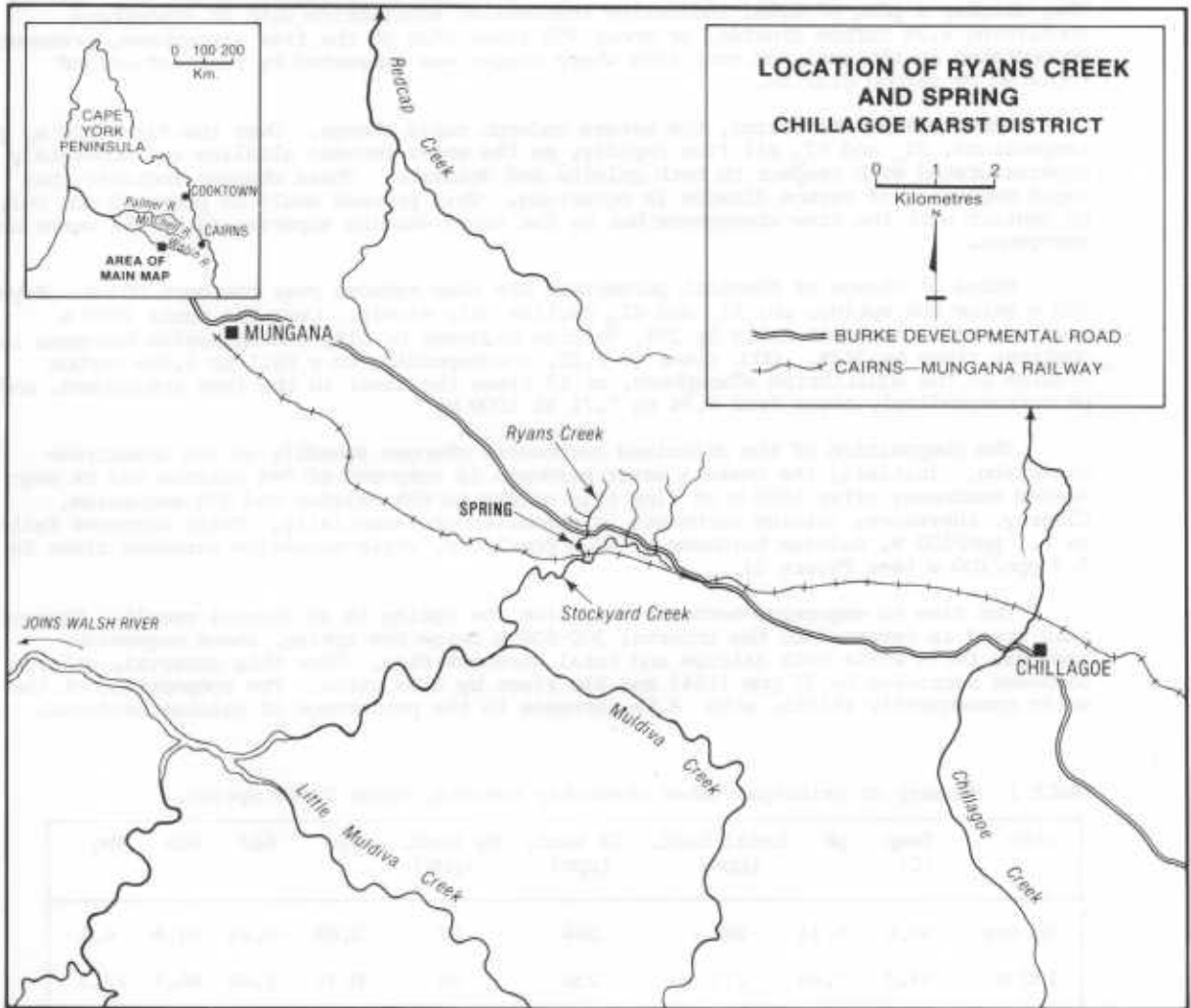


Figure 1 Location map showing Ryans and Stockyard Creeks, Chillagoe karst.

OBSERVATIONS OF WATER CHEMISTRY

Samples of spring water were collected on 6, 12, and 20 January 1983. The major analyses reported here are based upon samples collected on January 12. All samples were collected in rinsed 250 ml capacity polyethylene bottles which were completely filled to exclude air. Water temperature was recorded in the field and all other analyses were carried out at a field camp within 4 hours of collection.

Parameters determined for each sample included pH, electrical conductivity, total and calcium hardness and titration alkalinity. Conductivity was determined with a Metrohm model E587 conductometer and pH with a Metrohm model E588 pH meter using a Metrohm combination electrode standardised in fresh buffers at pH 7 and pH 9.2 prior to use. Hardness was determined by complexometric titration of 50 ml samples using standard BDH reagents. Alkalinity was determined by titration of 50 ml samples to the methyl orange point using 0.02 M HCl. All titrations were performed in white porcelain evaporating basins with continuous steady stirring. Saturation indices and carbon dioxide partial pressures required for equilibrium were determined through the use of the WATSPEC solution model (Wigley 1977).

RESULTS

The principal water chemistry results are presented in Table I and Figure 2.

At the spring, the waters carry a considerable load of dissolved carbonates (about 300 ppm as calcium carbonate), are almost in equilibrium with calcite ($SI_c = 0.05$), and are somewhat undersaturated with respect to dolomite ($SI_d = -0.83$). The spring water is also very warm (30-31°C) and this would act to reduce the uptake of carbon dioxide if typical of the underground stages. The spring waters are slightly acidic (pH = 6.74). They display a pCO_2 of 1.08, indicating theoretical equilibrium with an atmosphere containing 8.3% carbon dioxide, or about 250 times that of the free atmosphere, presumably encountered in the soil and root zone where oxygen was extracted by respiration and replaced by carbon dioxide.

Upon leaving the rising, the waters undergo rapid change. Over the first 200 m, pH, temperature, SI_c and SI_d all rise rapidly, so the water becomes alkaline and moderately supersaturated with respect to both calcite and dolomite. These changes indicate that rapid degassing of carbon dioxide is occurring. This process would be promoted not only by contact with the free atmosphere but by the rapid warming experienced by the water on emergence.

Rates of change of chemical parameters are then reduced over the next 800 m. Beyond 300 m below the spring, pH, SI_c and SI_d decline only slowly. Over the whole 1000 m studied, total hardness falls by 29%, calcium hardness by 51%, and magnesium hardness in contrast rises by 312%. pCO_2 rises to 2.25, corresponding to a fall to 0.56% carbon dioxide in the equilibrium atmosphere, or 17 times the level in the free atmosphere, and pH correspondingly rises from 6.74 to 7.71 at 1000 m.

The composition of the dissolved carbonates changes steadily in the downstream direction. Initially the overall water hardness is composed of 94% calcium and 6% magnesium hardness; after 1000 m of flow this alters to 65% calcium and 35% magnesium. Clearly, therefore, calcium carbonate is deposited preferentially. Total hardness falls by 8.1 ppm/100 m, calcium hardness by 13.4 ppm/100 m, while magnesium hardness rises by 5.3 ppm/100 m (see Figure 2).

The rise in magnesium hardness away from the spring is an unusual result. However, this trend is reversed in the interval 300-600 m below the spring, where magnesium hardness falls while both calcium and total hardness rise. Over this interval, calcium hardness increases by 27 ppm (15%) and SI_c rises by 0.03 units. The composition of the water consequently shifts, with 4.8% increase in the percentage of calcium hardness.

TABLE I Summary of principal water chemistry results, Ryans Creek spring.

| site | Temp (C) | pH | total hard. (ppm) | Ca hard. (ppm) | Mg hard. (ppm) | SI_c | SI_d | %Ca | %Mg |
|--------|----------|------|-------------------|----------------|----------------|--------|--------|------|------|
| Spring | 30.6 | 6.74 | 281 | 264 | 17 | 0.05 | -0.83 | 93.9 | 6.1 |
| 130 m | 33.0 | 7.60 | 272 | 236 | 36 | 0.79 | 1.04 | 86.7 | 13.3 |
| 300 m | 33.2 | 7.75 | 237 | 175 | 62 | 0.75 | 1.32 | 73.8 | 26.2 |
| 600 m | 31.0 | 7.69 | 257 | 202 | 55 | 0.78 | 1.26 | 78.6 | 21.4 |
| 1000 m | 31.0 | 7.71 | 200 | 130 | 70 | 0.53 | 1.06 | 65.0 | 35.0 |

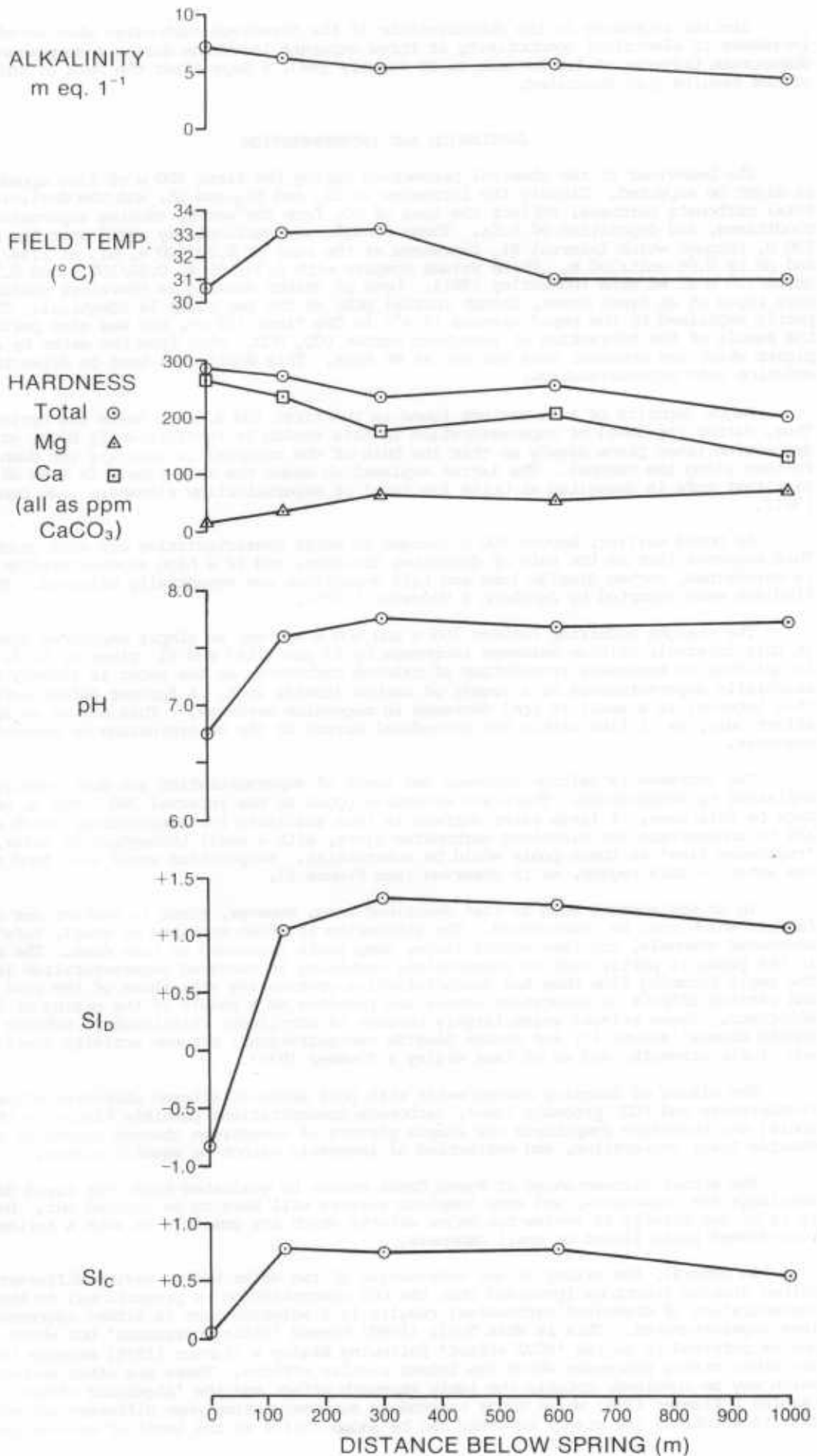


Figure 2 Principal water chemistry trends over 1 km below the Ryans Creek spring.

Similar increases in the concentration of the dissolved carbonates were noted by increases in electrical conductivity at three separate locations during a supplementary downstream traverse of 1.5 km made on 20 January 1983, 8 days after the date of collection of the results just described.

DISCUSSION AND INTERPRETATION

The behaviour of the chemical parameters during the first 300 m of flow appears much as might be expected. Clearly the increases in SI_1 and SI_2 and pH, and the declining total carbonate hardness, reflect the loss of CO_2 from the water, causing supersaturated conditions, and deposition of tufa. These changes are particularly rapid over the first 130 m, through which interval SI_1 increases at the rate of 0.57/100 m, SI_2 at 1.44/100 m, and pH by 0.66 unit/100 m. These values compare with 0.33/100 m, 0.68/100 m and 0.37 units/100 m at Mt Etna (Dunkerley 1981). Loss of carbon dioxide is therefore considerably more rapid at Ryans Creek, though initial pCO_2 at the two sites is identical. This is partly explained by the rapid warming (2.4°C in the first 130 m), but may also partly be the result of the extraction of inorganic carbon (CO_2 , HCO_3^- etc) from the water by aquatic plants which are abundant here but not at Mt Etna. This would also tend to drive the solution into supersaturation.

Major deposits of tufa are not found in the first 100 m or so below the spring. Thus, either the level of supersaturation in this region is insufficiently high, or the deposition takes place slowly so that the bulk of the material is actually set down further along the channel. The latter explanation seems the more likely in view of the fact that tufa is deposited at quite low level of supersaturation elsewhere (see Dunkerley 1981).

As noted earlier, beyond 300 m changes in water characteristics are more gradual. This suggests that as the rate of degassing declines, and as a high supersaturation level is maintained, carbon dioxide loss and tufa deposition are essentially balanced. Similar findings were reported by Jacobson & Uedowski (1975).

The changes occurring between 300 m and 600 m are not so simply explained however. In this interval, calcium hardness increases by 27 ppm (15%) and SI_1 rises by 0.03. This is unlikely to represent re-solution of calcium carbonate, as the water is already substantially supersaturated as a result of carbon dioxide loss. A further effect noted in this interval is a small (8 ppm) decrease in magnesium hardness. This may be an apparent effect only, as it lies within the procedural errors of the determination of magnesium hardness.

The increase in calcium hardness and level of supersaturation are most readily explained by evaporation. There are extensive pools in the interval 300 - 600 m, held back by tufa dams. A large water surface is thus available for evaporation, which would act to concentrate the dissolved carbonates since, with a small throughput of water, the 'residence time' in these pools would be substantial. Evaporation would also tend to cool the water in this region, as is observed (see Figure 2).

In an environment such as that described here, however, there is another set of factors which must be considered. The streamflow is often confined to small, tufa-encrusted channels, and then enters large, deep pools impounded by tufa dams. The water in the pools is partly lost to evaporation, resulting in elevated supersaturation levels. The small incoming flow thus has characteristics contrasting with those of the pool water, and various effects on saturation levels are possible as a result of the mixing of these solutions. These effects arise largely because of non-linear relationships between carbonate mineral solubility and carbon dioxide concentrations, between activity coefficients and ionic strength, and so on (see Wigley & Plummer 1976).

The mixing of incoming stream water with pool water of altered characteristics (temperature and pCO_2 probably lower, carbonate concentrations possibly highly in the pools) may therefore complicate the simple picture of downstream changes caused by carbon dioxide loss, evaporation, and extraction of inorganic carbon by aquatic plants.

The actual circumstances at Ryans Creek cannot be evaluated here: the field data available are inadequate, and more complete surveys will have to be carried out. However, it is of use briefly to review the major effects which are possible in such a series of tufa-dammed pools linked by small channels.

In general, the mixing of any combination of two water bodies having different carbon dioxide fractions (provided that the CO_2 concentration is proportional to the concentration of dissolved carbonates) results in a solution that is either aggressive, or less supersaturated. This is what Bogli (1980) termed 'mixing corrosion' but which is better referred to as the ' pCO_2 effect' following Wigley & Plummer (1976) because there are other mixing processes which can induce similar effects. There are other mechanisms which may be involved, notably the ionic strength effect and the 'algebraic effect' (Wigley & Plummer 1976) which tends to produce supersaturation when different saturated calcite solutions are mixed; to these can be added shifts in the level of saturation of

the mix depending on the temperatures of the separate components. Overall, this array of effects may lead to either lesser or greater saturation depending upon the actual solution characteristics and the volumes of each involved.

An additional effect which may be mentioned is the rejuvenated aggressiveness generated when solutions having different magnesium contents are mixed. According to the results of Picknett (1972), maximum calcite solubility occurs when there is dissolved Mg present to a level of about 10% that of calcium. Both lower and higher Mg concentrations reduce calcite solubility. Hence, mixing of waters with different Mg contents will tend to produce a solution which is more aggressive than either component: i.e., its aggressiveness is renewed. Mixing of waters to produce a solution containing 5-10% Mg should have a particularly marked effect (Picknett 1972).

Because the deposition of magnesium carbonate from saturated solutions is slow (because of still obscure kinetic effects) it is unlikely that solutions differing in Mg concentration could be produced in the length of subaerial flow involved at Ryans Creek. However, the proportion of Mg changes continually at this site because of both calcium deposition as tufa and because of evaporative concentration (the magnesium hardness represents 6.1% of the total at the spring and 35% at 1000 m downstream). Similar results demonstrating the concentration of Mg were presented by Douglas (1965). Hence there is ample scope for the effect outlined to operate where, for example, upstream water having an Mg concentration equivalent to 10% that of calcium flows into large pool where evaporation and tufa deposition have increased the proportion of Mg to 20%.

CONCLUSION

This study of tufa deposition in a seasonally dry karst area has demonstrated that both carbon dioxide degassing and concentration of solutes by evaporation are significant factors leading to the deposition of tufa. Carbon dioxide degassing generates the largest increases in saturation levels, found in the first 150 m or so of subaerial flow. Tufa deposition in this region does not proceed sufficiently fast, and the level of disequilibrium increases downstream. Over the remainder of the reach of channel studied, changes in water chemistry are slower. A monotonic decline in solute concentrations is not displayed, however, because of the effects of evaporation. Local increases in solute concentration result at several points along the channels where large pools facilitate water loss. Tufa deposition is probably enhanced at these sites. However, the complex sequence of pools and small channels created by the tufa deposition may have led to more complex reactions not identified here. In particular, the contrasting character of the water entering a tufa dam and the bulk of the water impounded may lead to local increases or decreases in the level of supersaturation. A fuller field survey, incorporating flow measurements and pool volume surveys, will be required to evaluate these effects.

REFERENCES

BOGLI, A., 1980 Karst hydrology and physical speleology. Springer, Berlin. Pp 284.

DE KEYSER, P. & WOLFF, K.W., 1964 The geology and mineral resources of the Chillagoe area, Queensland. Dept. Natl. Devt.: Bur. Mineral Resour. Geol. & Geophys., Bulletin 70, 136 pp.

DOUGLAS, I., 1965 Calcium and magnesium in karst waters. Helictite 3: 23-36.

DUNKERLEY, D.L., 1981 Chemistry of a tropical tufa-depositing spring near Mt. Etna, Queensland : a preliminary analysis. Helictite 19: 15-21.

DUNKERLEY, D.L., 1983 Lithology and micro-topography in the Chillagoe karst, Queensland, Australia. Zeit. Geomorph., N.F., 27: 191-204.

NANCOLLAS, G.H. & REDDY, M.M., 1976 Crystal growth kinetic of minerals encountered in water treatment processes. pp.219-253 in A.J. Rubin (ed.) Aqueous-environmental chemistry of metals. Ann Arbor Science Publishers, Ann Arbor. Pp 390.

PICKNETT, R.G., 1972 The pH of calcite solutions with and without magnesium carbonate present, and the implications concerning rejuvenated aggressiveness. Trans. Cave Res. Group Great Britain, 14:141-150.

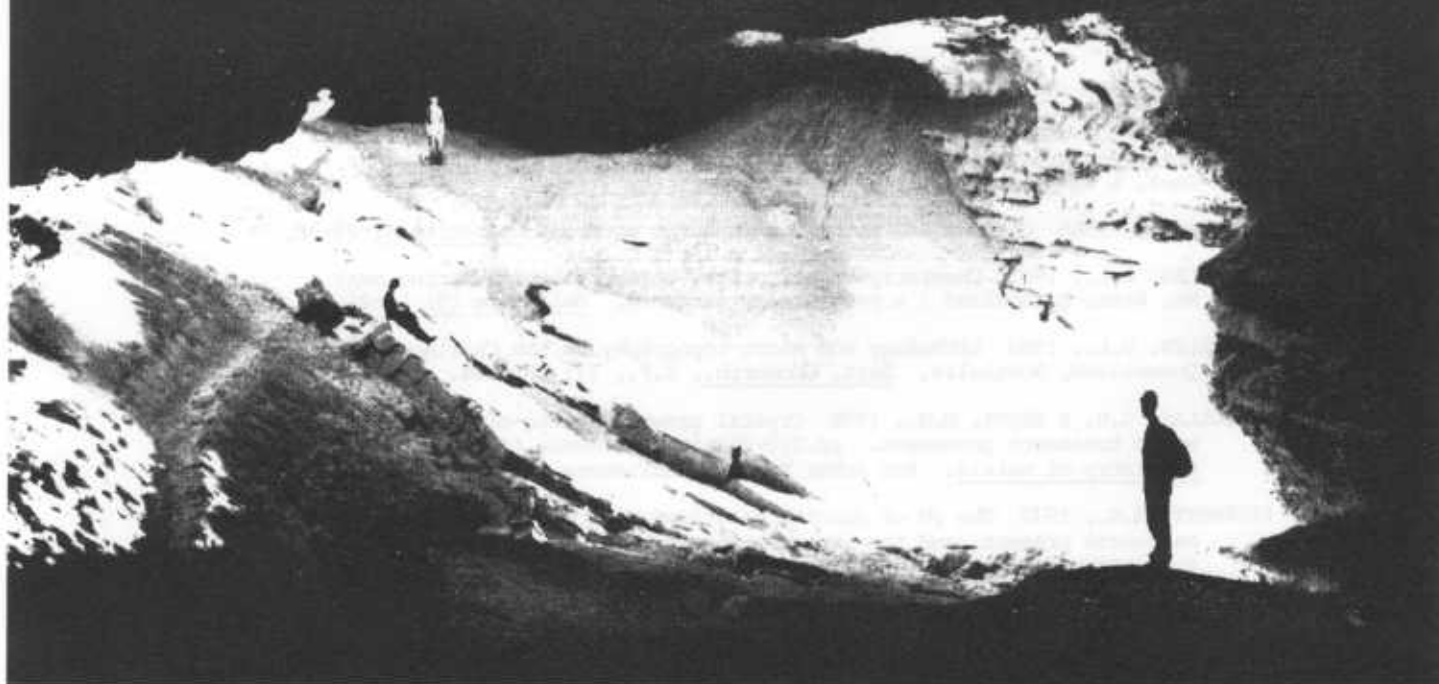
WALTON, A.G., (1967) The formation and properties of precipitates. Wiley, New York. Pp 232.

WIGLEY, T.M.L., 1977. WATSPEC: a Computer program for determining the equilibrium speciation of aqueous solutions. British Geomorph. Res. Grp. Tech. Bull. 20, 48 pp.

WIGLEY, T.M.L. & PLUMMER, L.N., 1976 Mixing of carbonate waters. Geochim. et Cosmochim. Acta, 40: 989-995.



CAVES OF THE NULLARBOR



Caves of the Nullarbor

J.R. Dunkley & T.M.L. Wigley

A4 66pp, 20 photographs, 12 maps

The first book on this interesting area of Australia. Caves include halite decorations, mummified animal remains, primitive art. A real insight into the famous caves of Nullarbor.



Published by

THE SPELEOLOGICAL RESEARCH COUNCIL LTD.

P.O. Box 183, Broadway 2007, Australia.

First published 1967

Reprinted 1978

\$6.00

INFORMATION FOR CONTRIBUTORS

SCOPE

Contributions from all fields of study related to speleology will be considered for publication. Suitable fields include Earth Sciences, Speleochemistry, Hydrology, Meteorology, Conservation, Biospeleology, History, Major Exploration (Expedition) Reports, Equipment and Techniques, Surveying and Cartography, Photography and Documentation. Comprehensive descriptive accounts of the exploration and morphology of individual caves will be welcomed, but simple trip reports and brief cave descriptions are not adequate. Papers overall should not exceed 20 printed pages in length. Contributors intending to write at greater length or requiring any advice on details of preparation are invited to correspond with the Editors. All manuscripts will be read by referees. Short 'Letters to the Editor', expressing a personal view or giving a preliminary report of interesting findings, are welcomed, and will be given preference for speedy publication.

MANUSCRIPTS

Submitted manuscripts should be in a final form ready for publication. As proofs are not normally sent to authors particular care should be taken to check for typing errors. Manuscripts should be typed, double spaced, on one side of the paper. The title should be uppercase and underlined, and the authors' names should follow. A brief and explicit summary of the notable aspects of the paper, headed Abstract, should precede the main text.

Throughout the main text major headings should be in upper case, centred and not underlined, while subheadings should use lower case, underlined and aligned with the left hand margin. Acknowledgements should be placed at the end of the text before the references, and the authors' addresses for correspondence should follow the references.

Authors with access to an IBM Golfball typewriter may wish to submit their papers in 'camera-ready' form. They should request our leaflet "Helictite Typographic Style". Papers should still be submitted in the above form in the first instance.

REFERENCES

References should be listed alphabetically at the end of the manuscript and cited in the text by the author's name and the year of publication (e.g. "(Grey, 1973)"). Where there is more than one reference to the same author in one year the letters a,b, c, etc. should be added. If there are more than two authors, they should all be named at the first citation and in the reference list, but the first name followed by 'et al.' should be used in subsequent citations. References should be checked particularly carefully for accuracy. Journal titles should be abbreviated following the "World List of Scientific Periodicals", which is available in most large libraries. The following examples illustrate the style:

GRAY, M.R., 1973 Cavernicolous spiders from the Nullarbor Plain and south-west Australia. J. Aust. ent. Soc. 12: 207-221.

VANDEL, A., 1965 Biospeleology. The Biology of the Cavernicolous Animals. Pergamon, London. Pp. xxiv, 524.

WIGLEY, T.M.L. and WOOD, I.D., 1967 Meteorology of the Nullarbor Plain caves. In: J.R. DUNKLEY and T.M.L. WIGLEY (eds), Caves of the Nullarbor. A Review of Speleological Investigations in the Nullarbor Plain. Southern Australia: 32-34. Speleological Research Council, Sydney.

ILLUSTRATIONS

Figures and photographs should be kept to a minimum and generally should not duplicate information in tables or other material. Photographs should be clear black and white prints with sharp focus. Where several photographs are to form one plate they should be mounted together on white card. Any lettering required on photographs should be applied with 'Letraset'. Figures should be drawn in Indian ink on white card, heavy paper or tracing material and lettered using stencils or 'Letraset'.

All illustrations should be drawn to fit a print area of 153 x 260 mm. They may be larger provided that these proportions are maintained, but allowance for reduction must be made when choosing letter sizes and line thickness. Several diagrams or photographs can only be included in one page if they all require the same reduction. Diagrams for inclusion in the text must be drawn to a width of either 153 mm (to appear at the same size) or 210 mm (for reduction); they must be clear and simple as they will be reproduced by a lower-quality process.

Figures and plates should each be numbered consecutively and specifically referred to in the text. The numbers should be marked lightly in pencil on the margin or back of each illustration. Captions should be typed on a separate sheet.

UNITS

The S.I. system (Australian Standard AS 1000) should be used unless citing historical data, in which case the original units should be quoted and appropriately rounded metric equivalents added; e.g. "100 feet (30 m)".

OFFPRINTS

Offprints of papers will be supplied after publication, at the author's expense. The number required should be stated when submitting the manuscript.

Helictite

JOURNAL OF AUSTRALASIAN CAVE RESEARCH

VOLUME 25(1)

1987

CONTENTS

- | | |
|--|----|
| An Annotated Speleological Bibliography of Oceania - R. Michael Bourke | 3 |
| Observations on the Buchan Karst during High Flow Conditions - Brian Finlayson and Mark Ellaway | 21 |
| Deposition of Tufa on Ryans and Stockyard Creeks, Chillagoe Karst, North Queensland - D.L. Dunkerley | 30 |



Speleological Research Council Limited